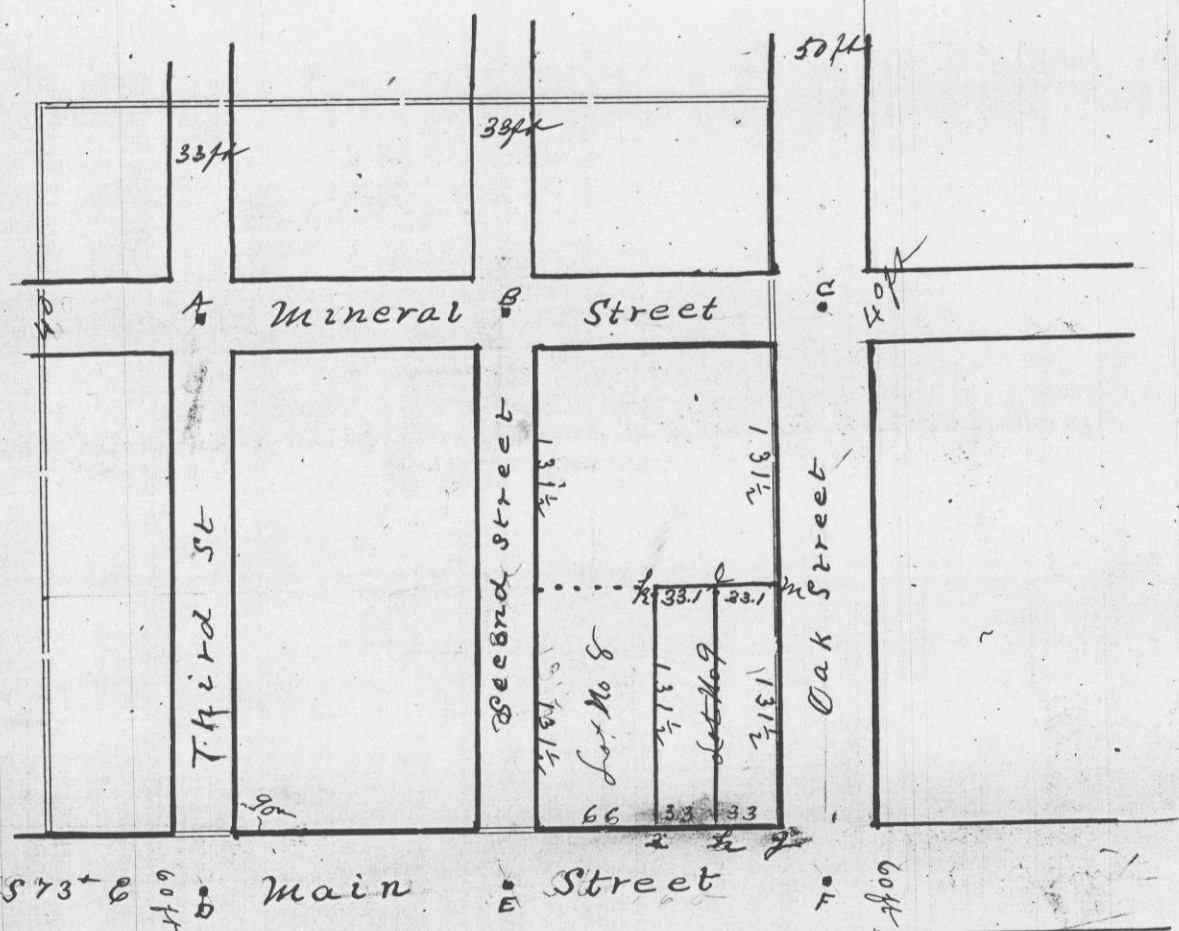


244
 44
 304



Corners	Bearing Trees	In. Dia.	Courses they Bear	Links Distant	REMARKS
A					Intersection of center lines of Mineral and Third Streets Large square stone comes to the surface. Put in by C. F. Quirton
B					Intersection of center lines of Mineral and Second Streets Found edge stake. Drove iron stake about 2 inch in diameter and 14 inches long in top of old stake. End of iron stake comes to surface
C					Found old oak stake. Drove same kind of stake from stake as at C on B Iron stake comes to surface
D					Intersection of center lines of Mineral and Oak Streets Found old oak stake. Set iron bar on top of old stake. Bar comes to surface
E					Intersection of center lines of Main and Third Sts Large stone monument about 7 or 8 inches below surface
F					Intersection of center lines of Main and Oak Street Stone monument about 4x5 inches with crop on top about 12 inches below surface
G					Mark made in cement sidewalk with chisel S.E. corner of Lot No 9
H					S.E. corner of W 1/2 of Lot No 9
I					File mark on horizontal bar S.W. corner of Lot No 9
K					True corner in wall of building. Piece of gas pipe driven S 17° W 1 foot from true cor N.W. corner of Lot No 9
L					True corner in wall of building. Piece of gas pipe driven S 17° W 1 ft 4 1/2 inches from true cor N.E. corner of W 1/2 of Lot No 9
M					Iron stake at corner N.E. corner of Lot No 9

CERTIFICATE OF SURVEY.

STATE OF WISCONSIN, } ss.
 GRANT COUNTY, }

I, Charles Sampson, County Surveyor in and for the County

and State aforesaid, do hereby certify that I have executed the Survey represented by the foregoing Plat and annexed Field Notes of Survey, in accordance with the State Laws and Instructions of the Commissioner of the General Land Office. Scale, 80 chains to 4 inches. The figures in red ink are the lengths of the lines as stated in the Field Notes of the Government Survey.

Declination of the Magnetic Meridian from the True Meridian..... East. The variation of needle adopted in establishing corners is..... East.

WITNESS my hand this 1st day of July A. D. 1903

CHAINMEN.

Charles Sampson SURVEYOR.