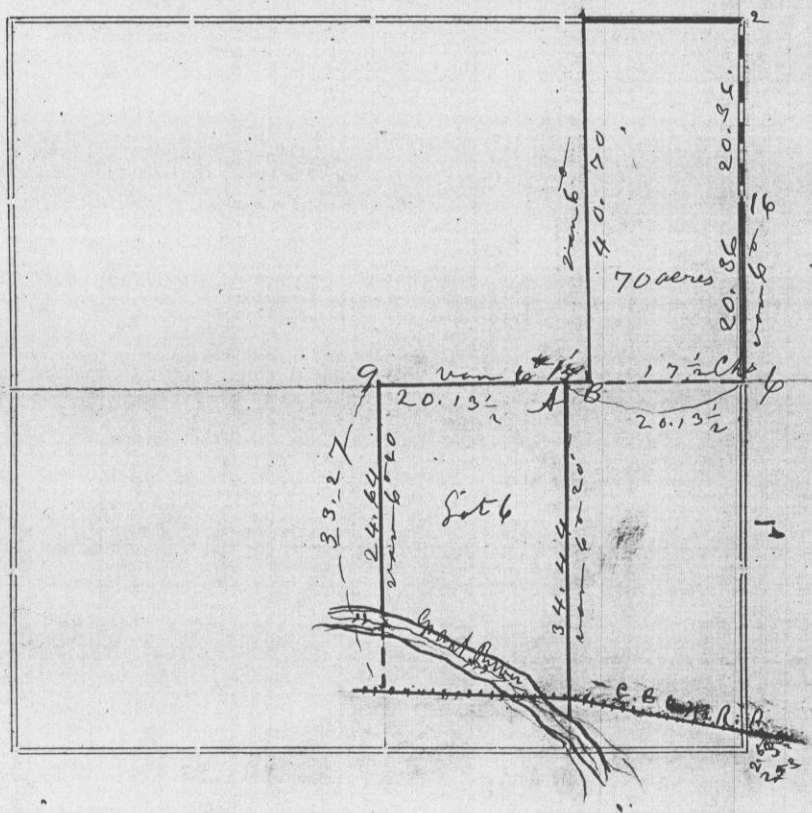


Section 5 Township 2 North Range 3 West of 4th P.M.



Corners	Bearing Trees	In. Dia.	Courses they Bear	Links Distant	REMARKS
2	Set by J. C. Lera				
16	Do Do Do Do				
6	original corner bearings obliterated				
9	Set by Geo R. Hunt		in 1845	Stumps of both of his bearing trees	
A	Black Walnut	6	S 87 1/2 W	114	taken by Hunt in 1845
	Hickory	12	S 74 1/2 W	136	
	Black Oak Stump	24	N 17 1/2 W	12	
B	White Oak	7	N 7 1/2 W	64	
	Do Do	14	N 72 1/2 E	78	
South boundary of section noted by land lines of C. & N. R.					

CERTIFICATE OF SURVEY.

STATE OF WISCONSIN, }
 GRANT COUNTY, } ss.

I, Charles Sampson, County Surveyor in and for the County and State aforesaid, do hereby certify that I have executed the Survey represented by the foregoing Plat and annexed Field Notes of Survey, in accordance with the State Laws and Instructions of the Commissioner of the General Land Office. Scale, 80 chains to 4 inches. The figures in red ink are the lengths of the lines as stated in the Field Notes of the Government Survey.

Declination of the Magnetic Meridian from the True Meridian 6 East. The variation of needle adopted in establishing corners is 6 East.

WITNESS my hand this 22nd day of April A. D. 1888

J. B. Dunn
A. W. Vandrunen } CHAINMEN.

C. C. Sampson SURVEYOR.