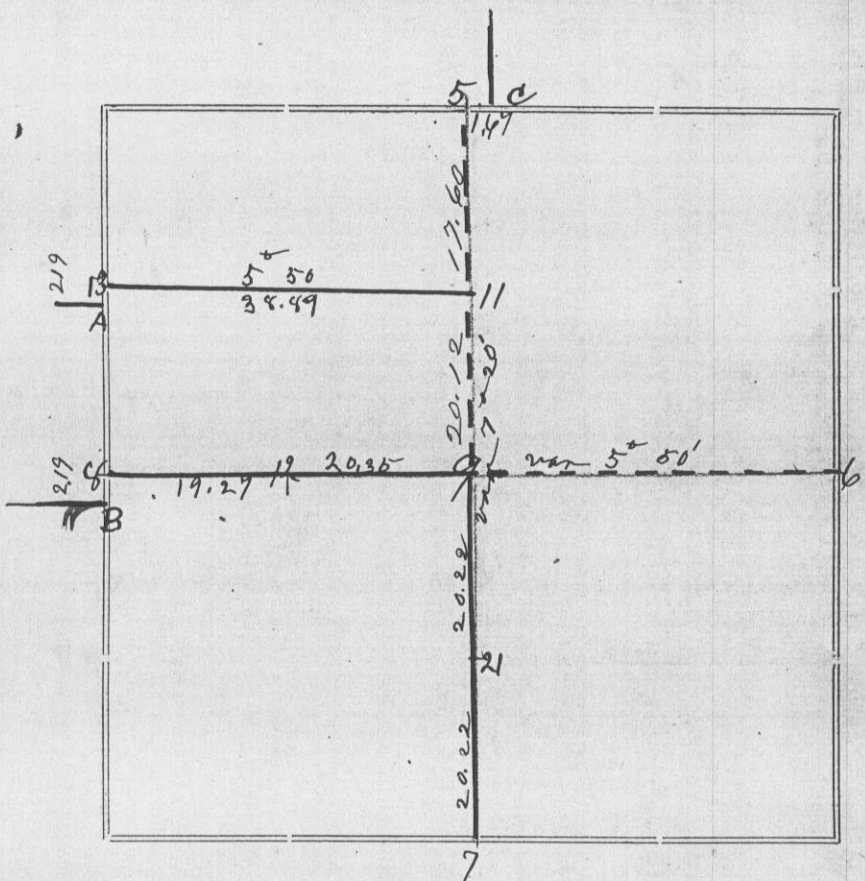


Section 6 Township 5 North Range 5 West of 4th P. M.



Corners	Bearing Trees	In. Dia.	Courses they Bear	Links Distant	REMARKS
C	Stamp of N.W. original sec 6-5-5				Found Stamp of both the bearing trees taken by Bunker in 1875 also of the bearing taken 83 1/2 lbs west
A	Stone				Established by Seath in 1881. Found stone, S.W. B.T. Standing and stump of other stump on East side of N.E. 1/4 of Sec 1-5-6
B	Stone				S.W. original still standing, Found Stone at corner E 1/4 for Sec 1-5-6
5					167 west of C in E. S 1/4 cor for Sec 31-6-5
6					Found Stone and remains of N.W. org bearing
7					Original White oak still standing, found stump of Yellow oak org end of line
8					219 north of B in E 1/4 cor for Sec 1-5-6
9	Set irregular shaped Stone	18 x 12 x 12			White oak 24 S 29 1/2 W 25 1/2 feet of center bears S 64 1/2 W 78 lbs from Seath's corner
11	White Oak	20	N 77 W	56	
	Do Do	16	N 33 46 E	67	
12	Black Oak	6	S 15 W	43 1/2	
	Red Oak	4	S 50 1/2 E	39	
21					Out rock with broken glass underneath
13					219 lbs north of A

STATE OF WISCONSIN, }
GRANT COUNTY, } ss.

CERTIFICATE OF SURVEY.

I, Charles Sampson, County Surveyor in and for the County and State aforesaid, do hereby certify that I have executed the Survey represented by the foregoing Plat and annexed Field Notes of Survey, in accordance with the State Laws and Instructions of the Commissioner of the General Land Office. Scale, 80 chains to 4 inches. The figures in red ink are the lengths of the lines as stated in the Field Notes of the Government Survey.

Declination of the Magnetic Meridian from the True Meridian 6 1/2 East. The variation of needle adopted in establishing corners is 6 1/2 East.

WITNESS my hand this 19th day of December A. D. 1888

John Moush
David Moush } CHAINMEN. C. C. Sampson SURVEYOR.