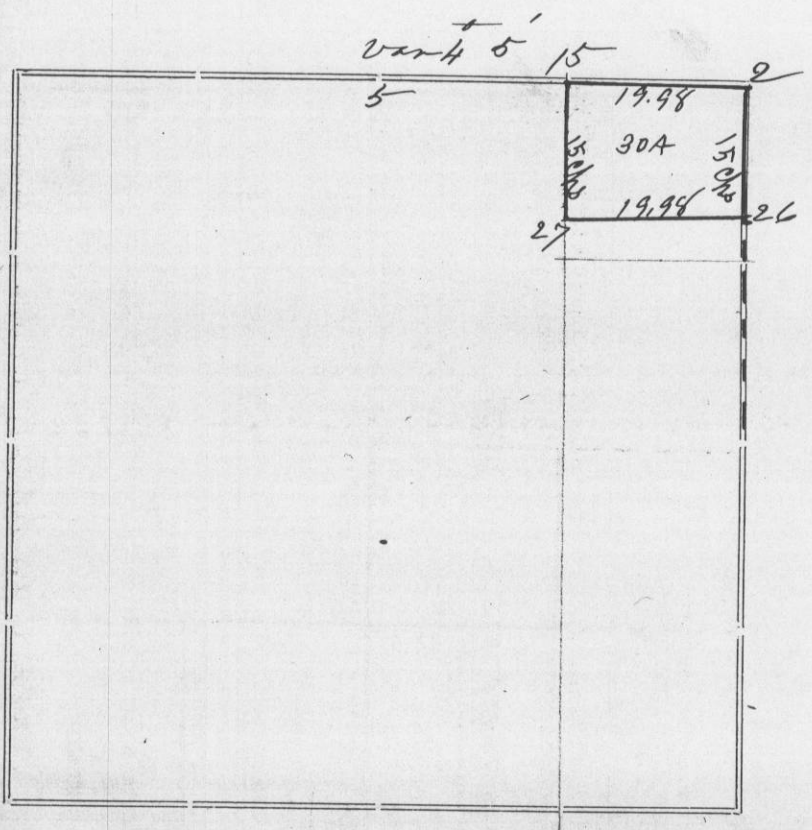


274



Corners	Bearing Trees	In. Dia.	Courses they Bear	Links Distant	REMARKS
2	White Oak Sugar Pine	20 6	S 6 W S 4 W	39 87	Found stump of original bearing tree Also stake with letter with corner
5	See page 262		this volume		
15	" "	" "	" "	" "	
26	Burr Oak " " "	2 1/2 2	N 74 1/2 E N 56 1/2 W	8 15 1/2	
27	White Oak Sugar	8 12	N 65 E N 38 1/2 E	115 59	

STATE OF WISCONSIN, }  
 GRANT COUNTY, } ss.  
 I, Charles Sampson, County Surveyor in and for the County  
 and State aforesaid, do hereby certify that I have executed the Survey represented by the foregoing Plat and annexed Field Notes of Survey, in  
 accordance with the State Laws and Instructions of the Commissioner of the General Land Office. Scale, 80 chains to 4 inches. The figures  
 in red ink are the lengths of the lines as stated in the Field Notes of the Government Survey.  
 Declination of the Magnetic Meridian from the True Meridian 6 1/2 East. The variation of needle adopted  
 in establishing corners is 7 1/2 East.  
 WITNESS my hand this 16th day of April A. D. 18 94.  
James Loney } CHAINMEN.  
Frederick Bowman }  
C. C. Sampson SURVEYOR.