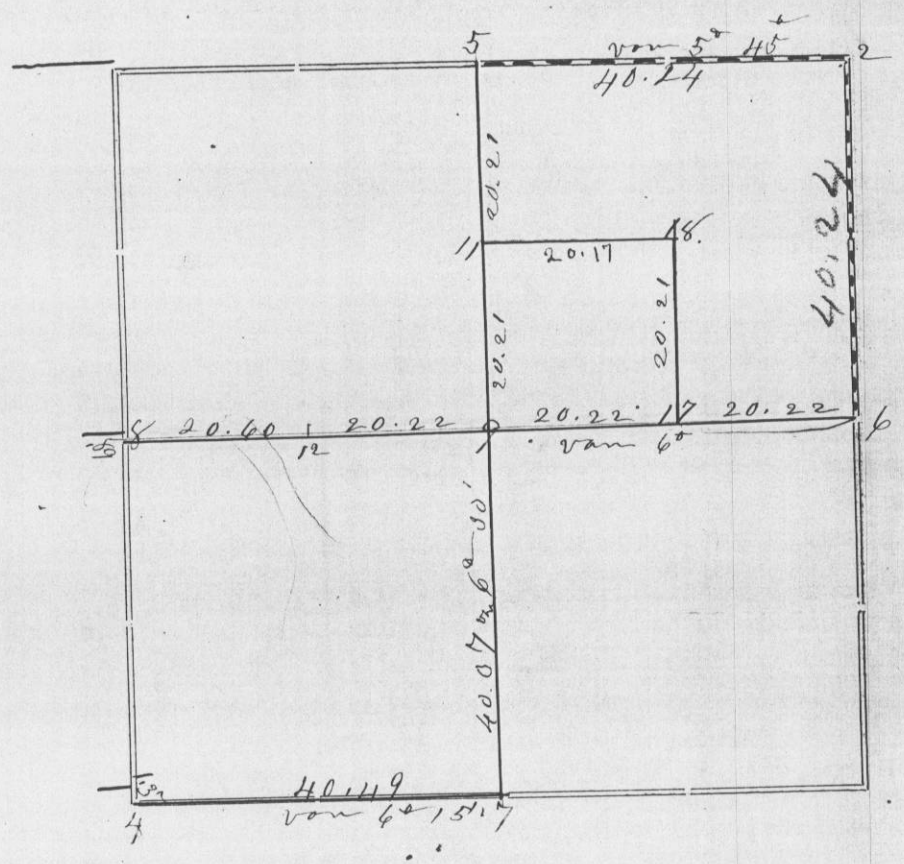


Section 30 Township 3 North Range 3 West of 4th P.M.



Corners	Bearing Trees	In. Dia.	Courses they Bear	Links Distant	REMARKS
2	Both original in good condition				
5	Pin oak Black Walnut	16 16	N 62° W N 4 1/4° E	15 45 1/2	Found remains of both original. N.W. is N 25° W instead N 15° W
6	N.C. tree in good condition. Found root of other				
7	S.E. to original still standing				
8	original corner				
9	Stake				
11	White Oak Red Oak	12 13	N 28° 40' W N 22° E	29 1/2 44 1/2	
17	Large black oak Do Do Do	8 1/2 20 20	N 57° W N 27° E	44 18	
18	White Oak Hickory	20 10	N 63° W N 71° W	31 47	
4	Established from watered corner				

CERTIFICATE OF SURVEY.

STATE OF WISCONSIN, } ss.  
GRANT COUNTY,

I, Charles Sampson, County Surveyor in and for the County

and State aforesaid, do hereby certify that I have executed the Survey represented by the foregoing Plat and annexed Field Notes of Survey, in accordance with the State Laws and Instructions of the Commissioner of the General Land Office. Scale, 80 chains to 4 inches. The figures in red ink are the lengths of the lines as stated in the Field Notes of the Government Survey.

Declination of the Magnetic Meridian from the True Meridian 6° 25' East. The variation of needle adopted in establishing corners is 7° East.

WITNESS my hand this 27<sup>th</sup> day of August A. D. 1897

Jo. P. Steiner  
Wm. Hall } CHAINMEN.

Charles Sampson SURVEYOR.