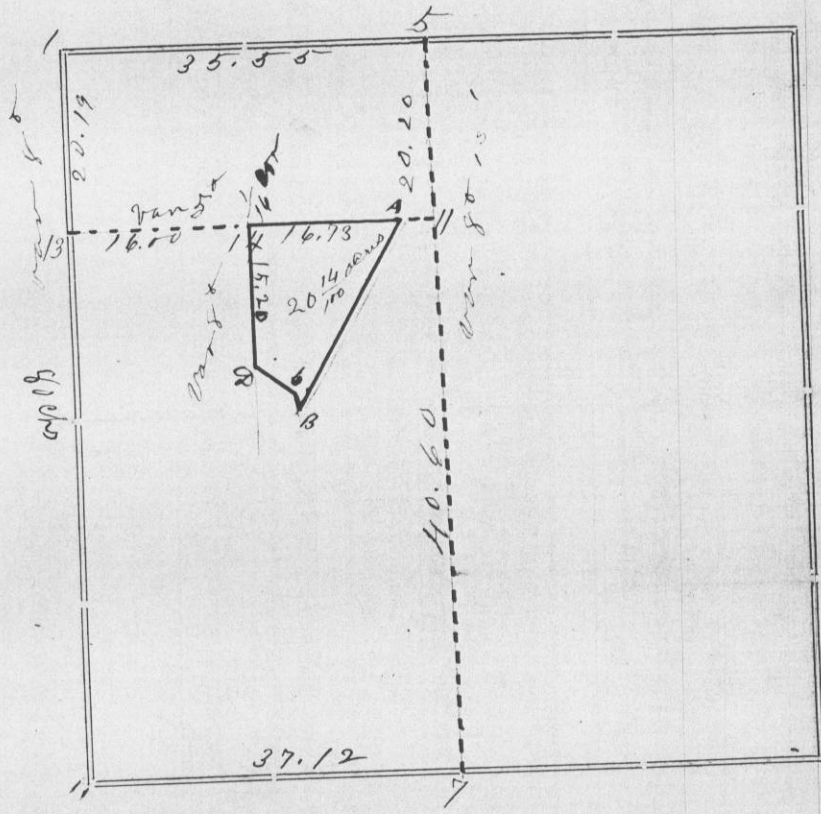


Section 19 Township 4 North Range 4 West of 4th P. M.



Corners	Bearing Trees	In. Dia.	Courses they Bear	Links Distant	REMARKS
1	Stone		Old stone corner		
5	"	"	"		
13	"	"	"		
14	"	"	"		
7	"	"	"		found remains of one bearing tree
A	White Oak	20	S 41° 35' W	89	Description of 20 <sup>14</sup> / <sub>100</sub> acre tract - Commencing at the center of NW <sup>1</sup> / <sub>4</sub> of 19-4-4 Thence South along <sup>1</sup> / <sub>2</sub> section line 15 <sup>00</sup> / <sub>100</sub> chs to highway thence S 81° 26' along highway " " " " " " to E & W <sup>1</sup> / <sub>2</sub> section line " " 31 <sup>24</sup> / <sub>100</sub> ch " " " " " " to place of beginning " " N 31° 59' 22 <sup>90</sup> / <sub>100</sub> chs " " 100 <sup>00</sup> / <sub>100</sub> ch 16 <sup>43</sup> / <sub>100</sub> to place of beginning The next to the last course is given in red ink N 38° E 23 <sup>50</sup> / <sub>100</sub> chs more or less but is evidently erroneous. This and the two preceding courses were run with a variation of 40° E
	Burr "	10	N 70° 25' E	107	

CERTIFICATE OF SURVEY.

STATE OF WISCONSIN, } ss.  
 GRANT COUNTY, }

I, Charles Samba, County Surveyor in and for the County and State aforesaid, do hereby certify that I have executed the Survey represented by the foregoing Plat and annexed Field Notes of Survey, in accordance with the State Laws and Instructions of the Commissioner of the General Land Office. Scale, 80 chains to 4 inches. The figures in red ink are the lengths of the lines as stated in the Field Notes of the Government Survey.

Declination of the Magnetic Meridian from the True Meridian 4° 20' East. The variation of needle adopted in establishing corners is 4° 20' East.

WITNESS my hand this 12<sup>th</sup> day of August A. D. 1897.

Walter Allen } CHAINMEN. Charles Samba SURVEYOR.