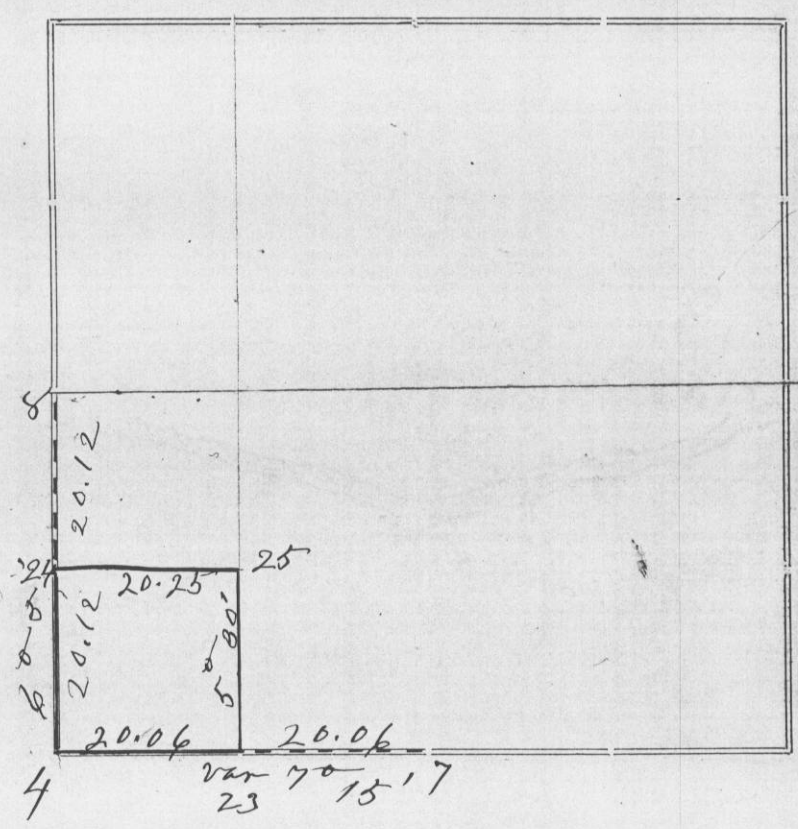


Section 15 Township 3 North Range #5 West of 4th P. M.



Corners	Bearing Trees	In. Dia.	Courses they Bear	Links Distant	REMARKS
4	Both N. E. Stamp of other		Blazing Tree	Standing	These two trees correspond exactly in course and distance with the original field notes. True course and distance places the corner 30 fms east and 32 lks south of where the courses recorded by Barber on page 69 of this volume would place it
23	White Oak	14	N 87 1/2° W	47	Same tree as Barber's N. E. Tree recorded on pg 69 this vol
	" " " "	12	N 73 1/2° W	97	Cor 32 lks east of where Barber placed it
24	Burr Oak	12	S 21 1/2° E	94 1/2	
	" " " "	12	N 1° E	79 1/2	
25	Established by witness				

CERTIFICATE OF SURVEY.

STATE OF WISCONSIN, } ss.  
 GRANT COUNTY, }

I, Charles J. Sampson, County Surveyor in and for the County and State aforesaid, do hereby certify that I have executed the Survey represented by the foregoing Plat and annexed Field Notes of Survey, in accordance with the State Laws and Instructions of the Commissioner of the General Land Office. Scale, 80 chains to 4 inches. The figures in red ink are the lengths of the lines as stated in the Field Notes of the Government Survey.

Declination of the Magnetic Meridian from the True Meridian 70 30' East. The variation of needle adopted in establishing corners is 70 30' East.

WITNESS my hand this 1st day of Jan A. D. 1894

\_\_\_\_\_ } CHAINMEN.  
Charles J. Sampson } SURVEYOR.