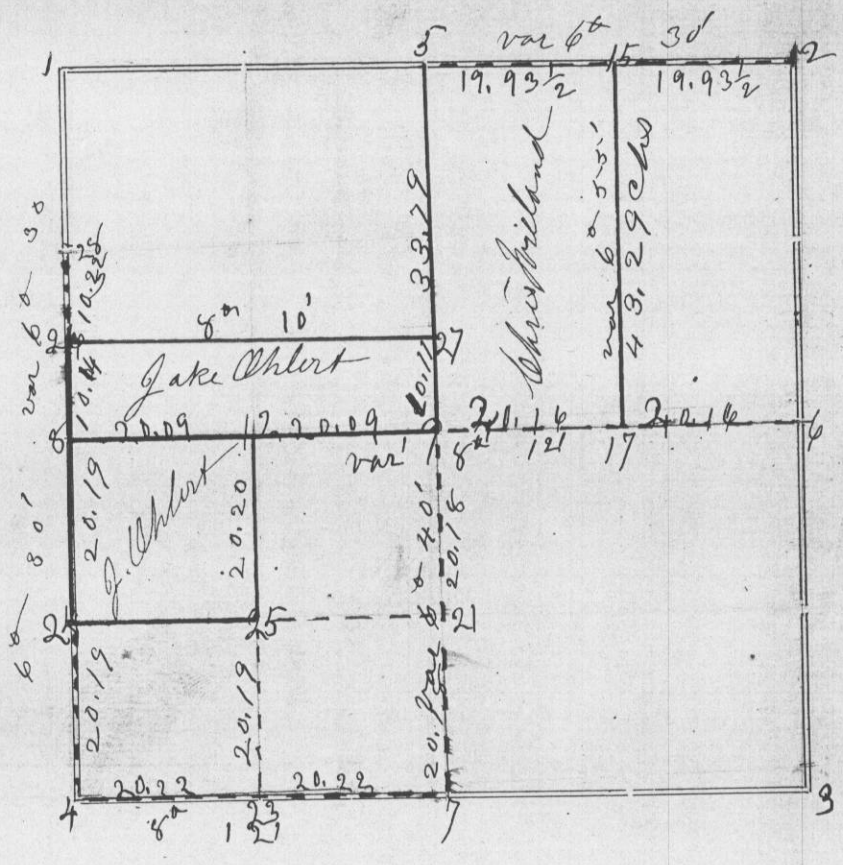


Section 5 Township 3 North Range 3 West of 4th P. M.



Corners	Bearing Trees	In. Dia.	Courses they Bear	Links Distant	REMARKS
2					Established from Lancaster cor 1.98 west. Of which found remains of both B.F.'s. Stone
4					Mercury original in good condition. Stone
6					Found decayed remains of both B.F.'s
7					Stumps of both original B.F.'s still standing Stone
8					Red & Stump still standing. Found decayed remains of both Elm
9	Syc 24 Spr 18 Stone 4x4x12		N 15 1/2 W N 50 3/4 S	28 1/2 20 1/2	Same as taken by Mahood but cor further west
24	White ash Stump 20 White Oak 4 Stone 4x4x12		N 66 1/2 W N 17 1/2 W	14 1/2 78	
25	Red Elm 20 White Oak 30 Stone 4x4x12		S 84 1/2 S N 68 1/2 S	9 1/2 138	
26	Syc 30 Red Oak 12 Stone		N 63 1/2 S N 28 S	76 9 1/2	
15	Black Oak 18 Stone 3x4x15		S 68 W	72	
17	White Oak 13 Burr Oak 2 Stone 4x4x12		N 11 1/2 W N 68 1/4 W	53 1/2 18	
5	Elm 10 Stone 2x8x15		S 21 W	47	Taken by Mahood. Still standing with blaze on.
28					Corner of 100 acre lot taken by Mahood B.F. still standing
12	Stone				

CERTIFICATE OF SURVEY.

STATE OF WISCONSIN, }  
GRANT COUNTY, } ss.

I, Charles Sampson, County Surveyor in and for the County

and State aforesaid, do hereby certify that I have executed the Survey represented by the foregoing Plat and annexed Field Notes of Survey, in accordance with the State Laws and Instructions of the Commissioner of the General Land Office. Scale, 80 chains to 4 inches. The figures in red ink are the lengths of the lines as stated in the Field Notes of the Government Survey.

Declination of the Magnetic Meridian from the True Meridian 6 30' East. The variation of needle adopted in establishing corners is 7 1/2' East.

WITNESS my hand this 19<sup>th</sup> day of December A. D. 1872.

George E. Taylor  
John Taylor  
Charles Housch } CHAINMEN.

Charles Sampson SURVEYOR.