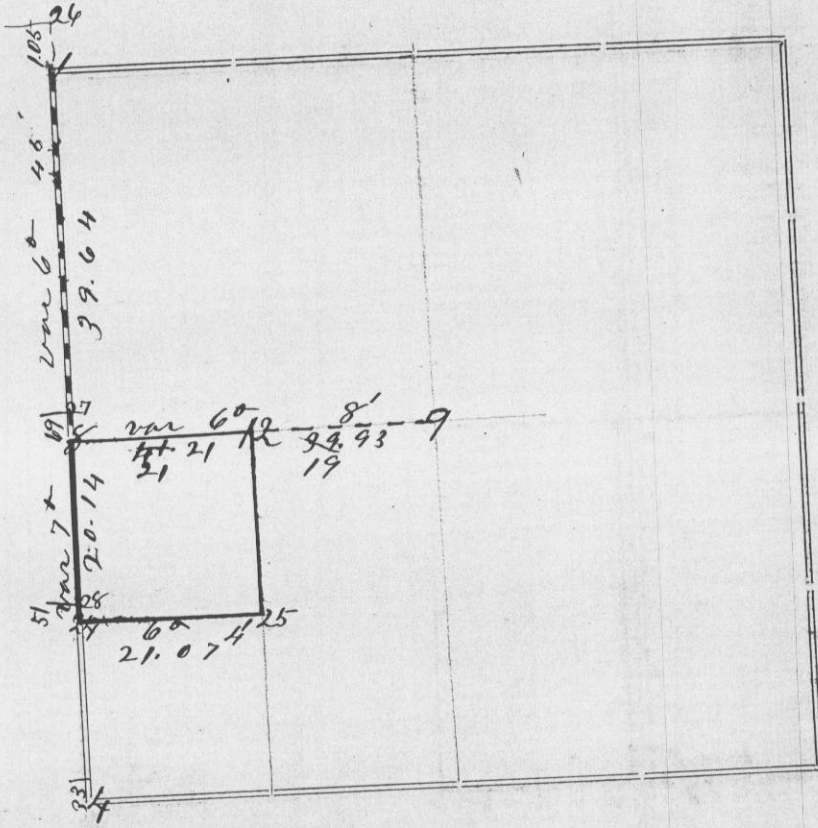


Section 19 Township 3 North Range 2 West of 4th P. M.



Corners	Bearing Trees	In. Dia.	Courses they Bear	Links Distant	REMARKS
1					Established by Scott in 1882 who found stump of one B. tree
24	original				both original B. T.'s intact
8	Elm	3	S 26 1/2 E	81 1/2	Established from 27 (Potosi corner)
27					Found remains of one original tree also of both bearing trees taken by Geo R. Slutzky in 1843
9					Stump of S. T. tree placed visible Established by John G. Slack in 1853 found stumps of both trees with flags upon them
12	white oak	18	S 16 W	37 1/2	
24	Stake				
28					Established by Slutzky in 1853. Stump of one B. T. still remains
4					Found decayed remains of B. T.'s and also for the Potosi corner
25					Established by Mc Fall

CERTIFICATE OF SURVEY.

STATE OF WISCONSIN, } ss. ...
 GRANT COUNTY, } I, Charles Sampson, County Surveyor in and for the County
 and State aforesaid, do hereby certify that I have executed the Survey represented by the foregoing Plat and annexed Field Notes of Survey, in accordance with the State Laws and Instructions of the Commissioner of the General Land Office. Scale, 80 chains to 4 inches. The figures in red ink are the lengths of the lines as stated in the Field Notes of the Government Survey.
 Declination of the Magnetic Meridian from the True Meridian 6° 38' East. The variation of needle adopted in establishing corners is 7° East.
 WITNESS my hand this 17th day of October A. D. 1892
Nathan Gullan } CHAINMEN.
George Schaefer } C. Sampson SURVEYOR.