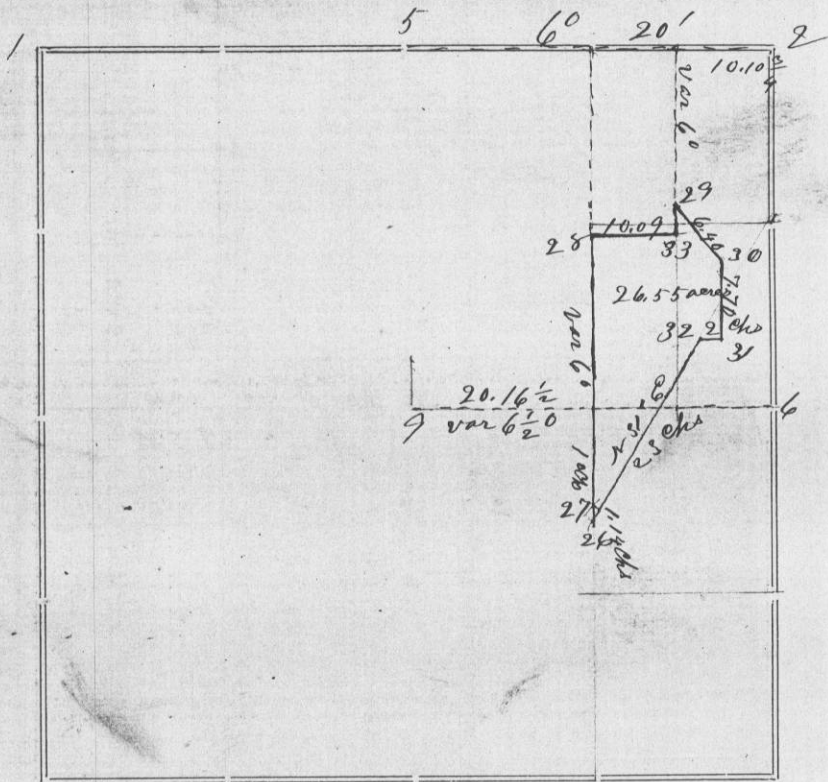


194



Corners	Bearing Trees	In. Dia.	Courses they Bear	Links Distant	REMARKS
2	Original stump of one tree remaining				
3	Stone corner set by McFall both bearing trees gone				
9	Established by Stutz in 1855 both bearing trees in good order				
6	Both trees gone				
28	Blk Walnut	7	S 72 1/2° W	49	
	" " "		S 41 1/2° W	46	
27	Established by Stutz in 1855 N. O.	18	N 65° E	65	Tree gone and stump badly decayed
29	Blk Oak	10	S 22° W	23	
	Blk Oak	10	N 42 1/2° W	21	
30	Hickory	8	N 6 1/2° W	24	
	" " "	9	N 50 1/2° W	28	
31	Blk Oak	20	N 7 1/2° W	1.53	
32	Blk Walnut	18	N 20 1/2° W	1.86	
33	N. O.	10	S 72 1/2° W	49	
	" "	9	N 55° W	46	

STATE OF WISCONSIN, GRANT COUNTY, ss.

CERTIFICATE OF SURVEY.

I, Charles Sampson, County Surveyor in and for the County and State aforesaid, do hereby certify that I have executed the Survey represented by the foregoing Plat and annexed Field Notes of Survey, in accordance with the State Laws and Instructions of the Commissioner of the General Land Office. Scale, 80 chains to 4 inches. The figures in red ink are the lengths of the lines as stated in the Field Notes of the Government Survey.

Declination of the Magnetic Meridian from the True Meridian 6 1/2 East. The variation of needle adopted in establishing corners is 6 1/2 East.

WITNESS my hand this 27th day of April A. D. 1891

Barnard Ellis Campbell
R. R. Swale } CHAINMEN.

Charles Sampson SURVEYOR.