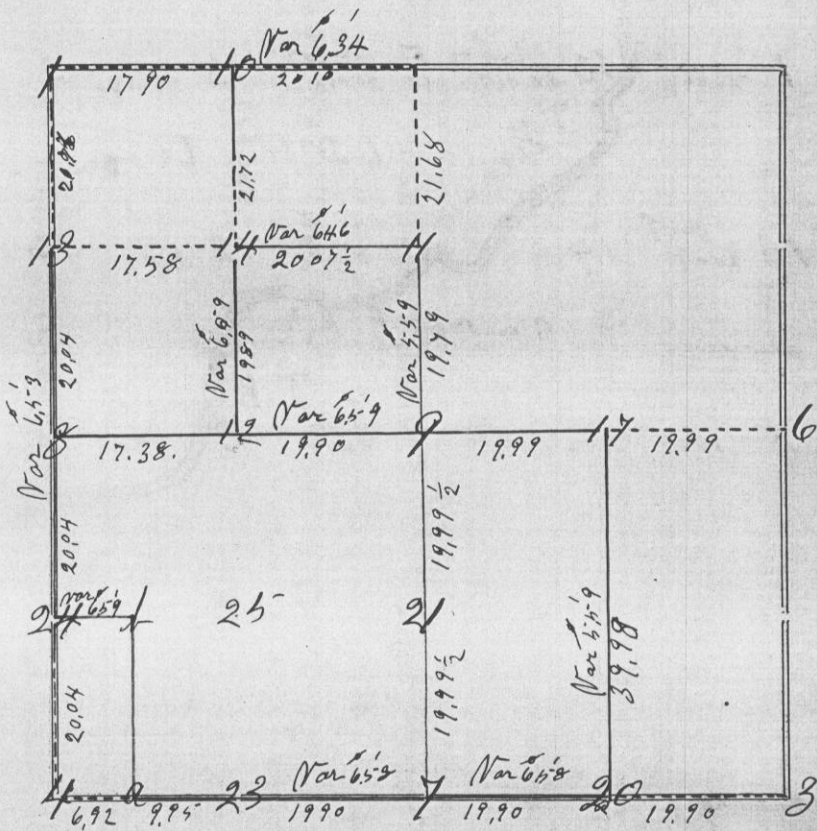


Section 6 Township 5 North Range 1 West of 4th P. M.



Corners	Bearing Trees	In. Dia.	Courses they Bear	Links Distant	REMARKS
1	W Oak Stone 9 X 13 X 3 1/2	22	N 74 1/2 W	120	
4					previously established found to be correct
5					parties promised to set brass bar
6					Original
7	Br Oak Stone 4 X 4 X 14	10	S 24 1/2 W	115	
8	" " 4 1/2 X 5 X 12				
9	" " 4 X 9 X 13				
10					
11	Br Oak " "	24	S 30 1/2 E	78 1/2	
		14	N 20 1/2 W	89	
12	Stone 4 X 8 X 15				
14	Br Oak Stone 4 1/2 X 5 1/2 X 10	10	West	3	
17					parties promised to set stone
20	Stone 3 X 8 X 16				
21	" " 4 X 12 X 15				
23	Stone 4 X 8 X 13				
24	W Oak Stone 4 X 9 X 18	18	N 47 E	173	
25	Stone 3 1/2 X 7 X 15				
a	cotton Wood	4	S 29 3/4 W	7	
t	Stone 5 1/2 X 8 X 15				

CERTIFICATE OF SURVEY.

STATE OF WISCONSIN, }
GRANT COUNTY, } ss.

I, *Herbert G. Gould*

County Surveyor in and for the County

and State aforesaid, do hereby certify that I have executed the Survey represented by the foregoing Plat and annexed Field Notes of Survey, in accordance with the State Laws and Instructions of the Commissioner of the General Land Office. Scale, 80 chains to 4 inches. The figures in red ink are the lengths of the lines as stated in the Field Notes of the Government Survey.

Declination of the Magnetic Meridian from the True Meridian East. The variation of needle adopted in establishing corners is *6.20* East.

WITNESS my hand this *15* day of *May* A. D. 18*89*.

Alex Gullikson
Julius Whitish } CHAINMEN.

Herbert G. Gould SURVEYOR.