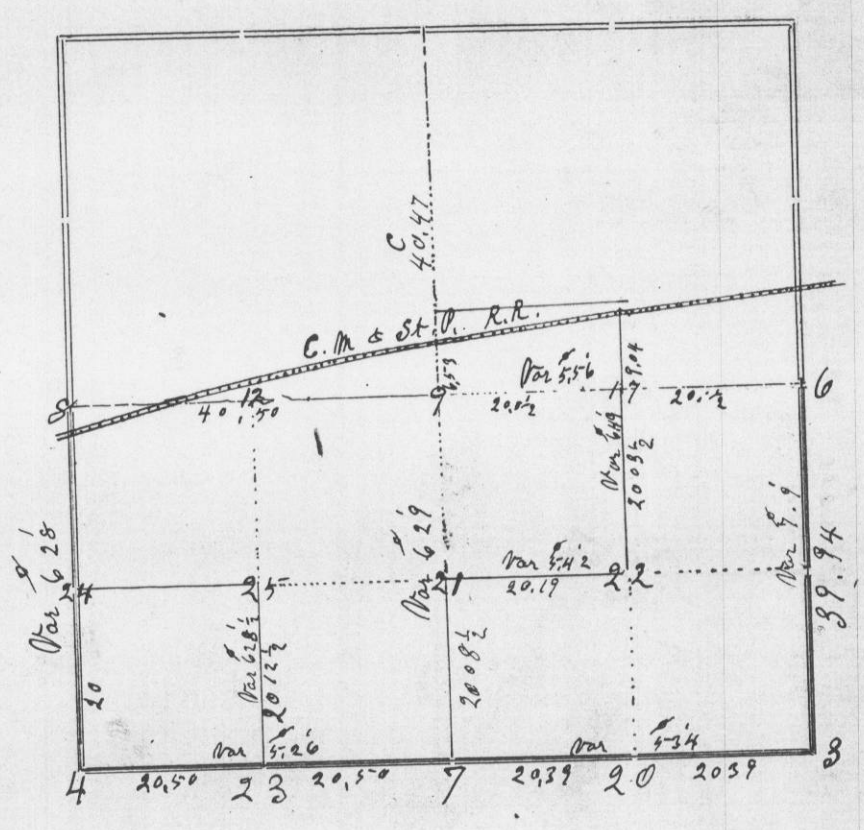


Section 11 Township 8 North Range 2 West of 4th P. M.



| Corners | Bearing Trees | In. Dia. | Courses they Bear | Links Distant | REMARKS |
|---------|---------------------|----------|---------------------------|----------------|----------------------------|
| 3 | Original | | | | one tree in good condition |
| 4 | " " " | | | | " " |
| 5 | Swamp Oak W. Ash | 24 8 | N 35 1/2 W S 7 3/4 E | 34 7 | |
| 6 | Set Stone | | 5x13x15 in | | |
| 7 | Original | | | | |
| 8 | B Oak " " | 12 8 | S 5 3/8 E N 8 6 E | 267 317 | |
| 9 | Set Stone | | 8x9x16 in | | |
| 12 | B Oak " " | 15 8 | N 87 1/2 E S 5 1/2 W | 152 122 1/2 | |
| 17 | Parties premises | to | Set a stone | | |
| 20 | Set Stone | | | | |
| 21 | B Oak | 8 | corner | | |
| 22 | B Oak W " | 10 6 | N 12 E " 80 1/2 W | 9 27 1/2 | |
| 23 | Or Oak " " | 12 3 | N 37 W S 8 2 E | 25 37 1/2 | |
| 24 | B Oak " " | 12 6 | S 5 8 3/4 W N 47 1/2 W | 17 16 1/2 | |

CERTIFICATE OF SURVEY.

STATE OF WISCONSIN, } ss.
 GRANT COUNTY, }
 I, Herbert J. Gould, County Surveyor in and for the County
 and State aforesaid, do hereby certify that I have executed the Survey represented by the foregoing Plat and annexed Field Notes of Survey, in
 accordance with the State Laws and Instructions of the Commissioner of the General Land Office. Scale, 80 chains to 4 inches. The figures
 in red ink are the lengths of the lines as stated in the Field Notes of the Government Survey.
 Declination of the Magnetic Meridian from the True Meridian East. The variation of needle adopted
 in establishing corners is East.
 WITNESS my hand this 12 day of April A. D. 1899
a. J. Bartholomew }
Frank Miller. } CHAINMEN.
Herbert J. Gould SURVEYOR.