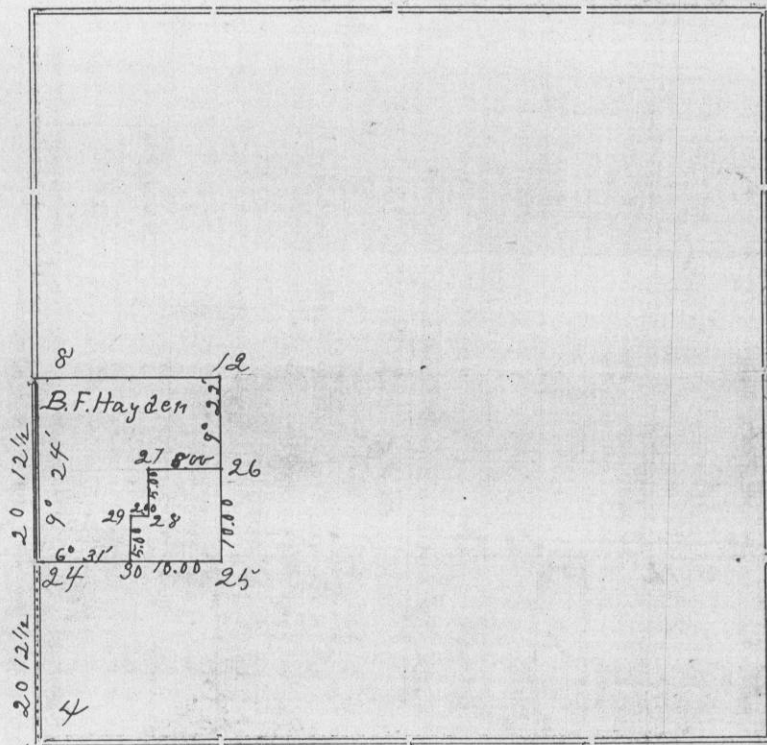


Section 29 Township 4 North Range 4 West of 4th P. M.



For Benj. F. Hayden on Apr. 2nd 1885

Corners	Bearing Trees	In. Dia.	Courses they Bear	Links Distant	REMARKS
4	Stake				Original corner
8	White Oak White Oak	12 15	N 37 W N 55 1/2 W	22 1/2 52	Found decayed remains of old ^{original} witness tree and from established the new corner
12	White Oak White Oak	12 8	N 20 E N 49 E	31 26	Found decayed stump of original witness tree and remains of old stake set by R. Stuntz in 1847 Natural Liberty corner Stuntz
24	SW corner of stone house		N 8 1/2 E	192	Set 24 equidistant (4) and (8)
25	Stone				Corner located by R. Stuntz in 1847
26	White Oak Center of top of large Stone	6	N 47 E S 37 E	39 1/2 22	
27	White Oak White Oak	12 12	N 58 E S 1 E	21 26	
28	Black Oak Burr Oak	10 6	N 67 W N 38 1/2 E	26 1/2 24	
29	White Oak Burr Oak	8 6	N 7 E S 21 W	20 1/2 21	
30	Set Stake				

STATE OF WISCONSIN, } ss.
GRANT COUNTY,

CERTIFICATE OF SURVEY.

I, F. C. Beardsley Deputy, County Surveyor in and for the County and State aforesaid, do hereby certify that I have executed the Survey represented by the foregoing Plat and annexed Field Notes of Survey, in accordance with the State Laws and Instructions of the Commissioner of the General Land Office. Scale, 80 chains to 4 inches. The figures in red ink are the lengths of the lines as stated in the Field Notes of the Government Survey.

Declination of the Magnetic Meridian from the True Meridian East. The variation of needle adopted in establishing corners is East.

WITNESS my hand this 8th day of April A. D. 1885

Harry Preston
John L. Taylor } CHAINMEN.

F. C. Beardsley Deputy SURVEYOR.