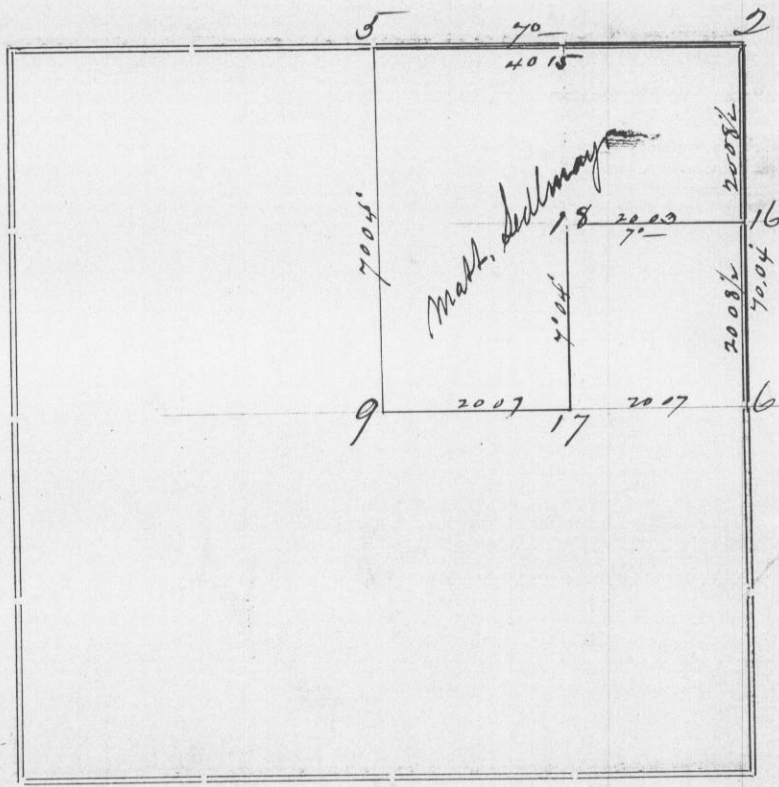


Section 20 Township 5 North Range 6 West of 4th P. M.



Dec. 15th. 1883.

Corners	Bearing Trees	In. Dia.	Courses they Bear	Links Distant	REMARKS
2	Original				Both Trees in good condition
5	Ash Birch	11 16	N 30 W N 57 E	31 21	
6	Original				The Sulp Oak B.T. in good condition. Willow gone.
9	Sulp Oak	8 26	N 19 1/2 W S 72 1/2 E	12 25 1/2	
16	Willow	14	S 81 E	17	
17	Drum Stake		on Bank of Bayou		
18	Drum Stake		in edge of Bayou.		

STATE OF WISCONSIN, }
GRANT COUNTY, } ss.

CERTIFICATE OF SURVEY.

I, J. C. Scott, County Surveyor in and for the County

and State aforesaid, do hereby certify that I have executed the Survey represented by the foregoing Plat and annexed Field Notes of Survey, in accordance with the State Laws and Instructions of the Commissioner of the General Land Office. Scale, 80 chains to 4 inches. The figures in red ink are the lengths of the lines as stated in the Field Notes of the Government Survey.

Declination of the Magnetic Meridian from the True Meridian..... East. The variation of needle adopted in establishing corners is 7° East.

WITNESS my hand this 20th day of December A. D. 1883.

..... } CHAINMEN.

J. C. Scott SURVEYOR.