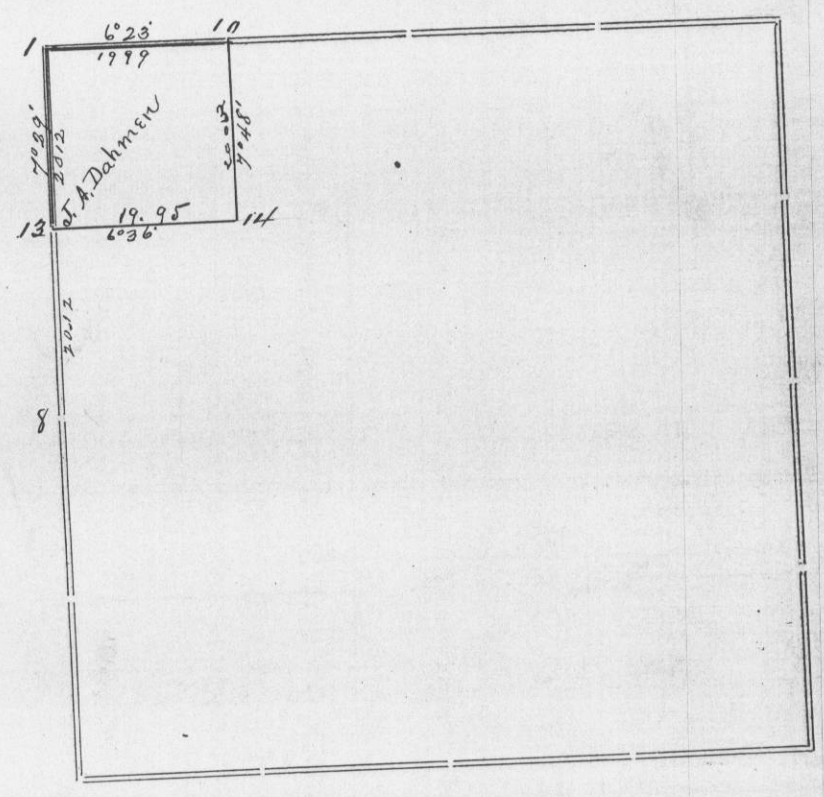


Section 21 Township 3 North Range 5 West of 4th P. M.



For John A. Dahmen May 13 + 14 1883

Corners	Bearing Trees	In. Dia.	Courses they Bear	Links Distant	REMARKS
					Same as No. 11. in preceding survey.
7					
10	Yellow Oak	8	N 23 1/2 E	28 1/2	Same as No. 22. in preceding survey.
	" "	6	N 84 1/2 E	32 1/2	
13	White Oak Stake				No Iron near Dove legs White Oak Stake on straight line & midway between 1 + 8
14	White Oak	3	S 88 W	38	In running the line from 10. south I noticed a strong deviation of the magnetic needle. which accounts for the var. of line from 10 to 14. I disregarded the needle & ran by back-sighting

CERTIFICATE OF SURVEY.

STATE OF WISCONSIN, } ss.
GRANT COUNTY,

J. C. Scott

County Surveyor in and for the County

and State aforesaid, do hereby certify that I have executed the Survey represented by the foregoing Plat and annexed Field Notes of Survey, in accordance with the State Laws and Instructions of the Commissioner of the General Land Office. Scale, 80 chains to 4 inches. The figures in red ink are the lengths of the lines as stated in the Field Notes of the Government Survey.

Declination of the Magnetic Meridian from the True Meridian East. The variation of needle adopted in establishing corners is East.

WITNESS my hand this 24 day of May A. D. 1883

Herman Koopfer }
Matthew Dahmen } CHAINMEN.

J. C. Scott SURVEYOR.