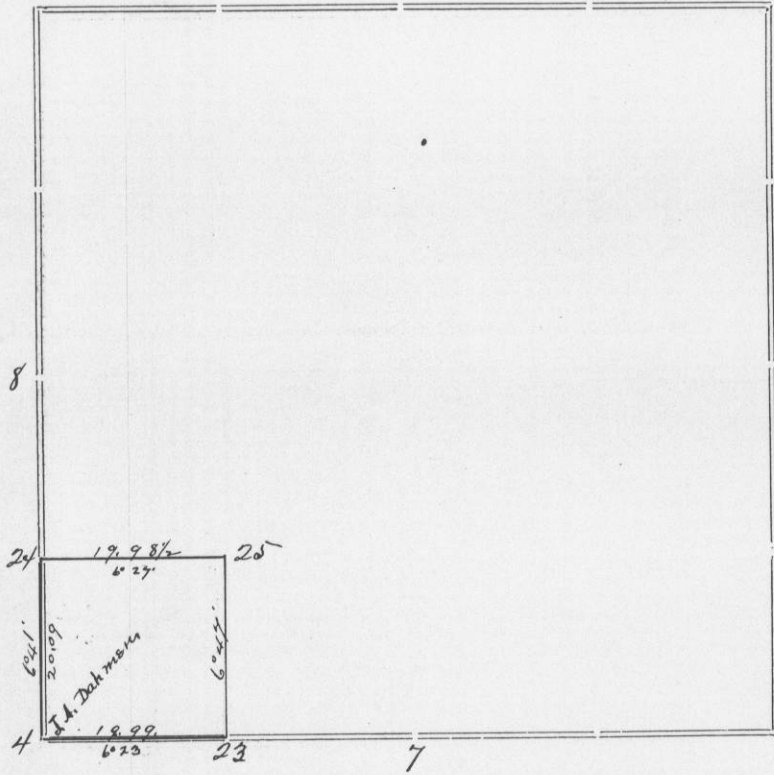


136



For J. A. Dahmer May 17 1882.

Corners	Bearing Trees	In. Dia.	Courses they Bear	Links Distant	REMARKS
4	White Oak " "	17 24	S 54 1/2 W S 70 E	40 46	Both of these trees are gone, found where they stood and located the corner. Drove a large white oak stake
23	Yellow Oak " "	8 6	N 23 1/2 E N 84 1/2 E	28 1/2 32 1/2	Located midway and on straight line between 4 & 7
24	Stake: White Oak				Notress near. Stake was set midway & on straight line between 4 & 8.
25	White Oak " "	8 10	S 26 3/4 E N 80 1/4 E	36 68 1/2	

STATE OF WISCONSIN, } ss.
GRANT COUNTY, }

CERTIFICATE OF SURVEY.

I, J. C. Scott, County Surveyor in and for the County and State aforesaid, do hereby certify that I have executed the Survey represented by the foregoing Plat and annexed Field Notes of Survey, in accordance with the State Laws and Instructions of the Commissioner of the General Land Office. Scale, 80 chains to 4 inches. The figures in red ink are the lengths of the lines as stated in the Field Notes of the Government Survey.

Declination of the Magnetic Meridian from the True Meridian, East. The variation of needle adopted in establishing corners is 7° East.

WITNESS my hand this 24th day of May A. D. 18 82.

Herman Koopfen
Matthew Dahmer } CHAINMEN.

J. C. Scott SURVEYOR.