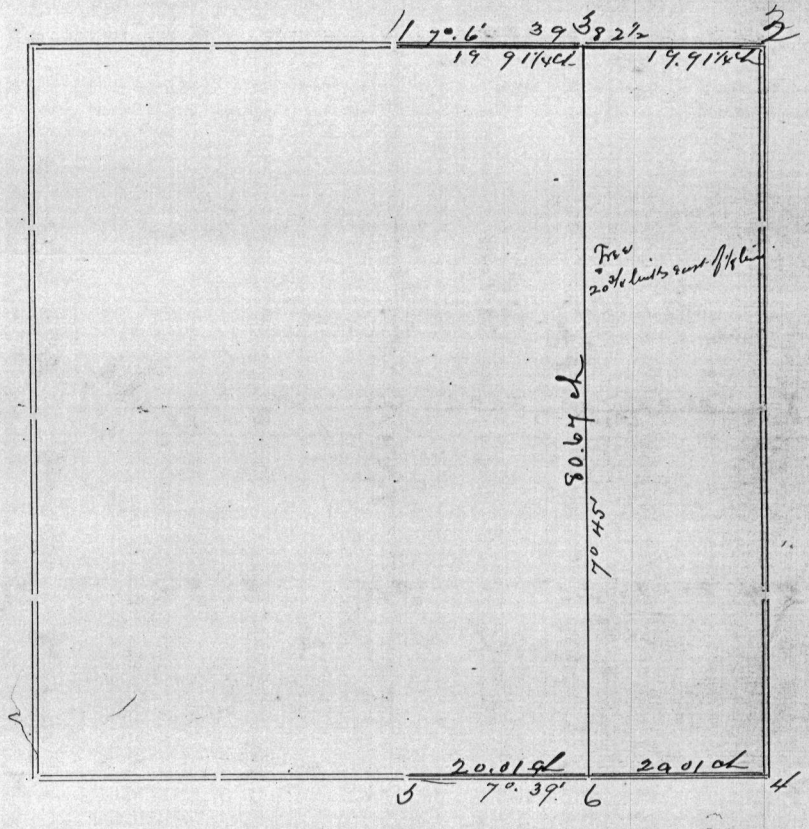


Section 29 Township 3 North Range 4 West of 4th P.M.



Surveyed for John Dechow May 3rd 1881

Corners	Bearing Trees	In. Dia.	Courses they Bear	Links Distant	REMARKS
1	Original corner				
2	Stone corner which was accepted by all parties concerned as a correct corner, and in all probability it is correctly located as the remains of a stump was found that agreed with one of the original witness trees				
3	White Oak B Oak	20 14	S 36 E S 83 1/4 W	235 178	
4	Original corner				
5	Cherry Black Oak	2 2	N 15 1/2 E N 83 1/4 W	14 26	One stump of original bearing tree was standing in which could be seen the blaze, also the decayed portions of other were found & the new bearings then taken
6	Tree no bearing for 6				
<p>The 1/4 section line on above plat was run to determine the ownership of a tree that was cut and I found the stump of the tree to be 20 1/4 links west of said 1/4 section line as shown in the plat</p>					

STATE OF WISCONSIN,
GRANT COUNTY, } ss.

CERTIFICATE OF SURVEY.

I, J. C. Scott, County Surveyor in and for the County and State aforesaid, do hereby certify that I have executed the Survey represented by the foregoing Plat and annexed Field Notes of Survey, in accordance with the State Laws and Instructions of the Commissioner of the General Land Office. Scale, 80 chains to 4 inches. The figures in red ink are the lengths of the lines as stated in the Field Notes of the Government Survey.

Declination of the Magnetic Meridian from the True Meridian..... East. The variation of needle adopted in establishing corners is 7° 32' East.

WITNESS my hand this 27th day of May A. D. 18 81

Hardwick Burtis
Joseph Tennessee } CHAINMEN.

J. C. Scott SURVEYOR.