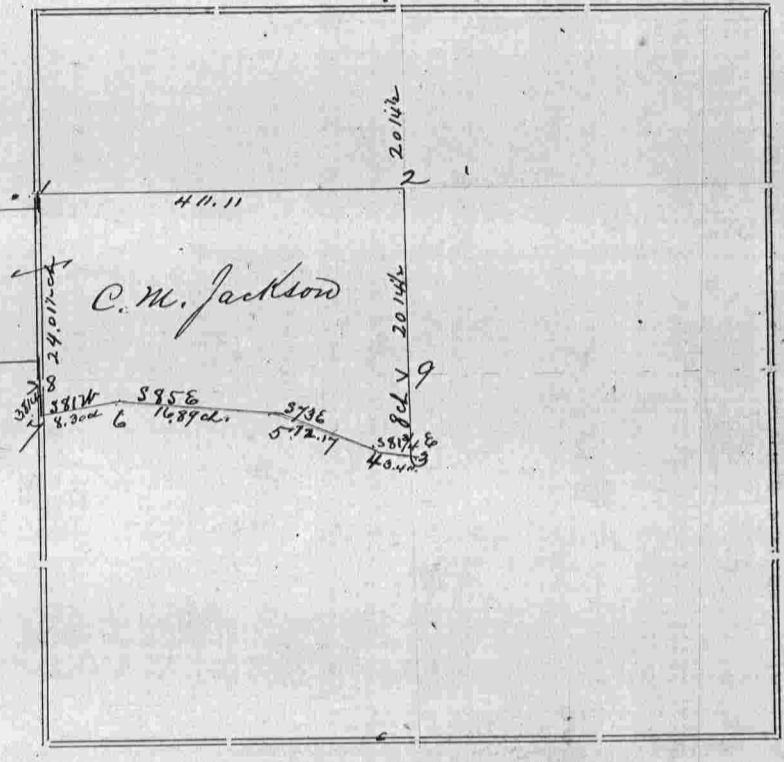


Section 35 Township 3 North Range 3 West of 4th P. M.



For C. M. Jackson May 11th 1881

Corners	Bearing Trees	In. Dia.	Courses they Bear	Links Distant	REMARKS
1	Black Oak Double Elm	14 4	S 1° 20' E N 46° 50' E	117 27	
2	Cherry Black Oak	15 14	N 79° 58' S 65° 20' W	62 1/2 28 1/2	
3	Post in field	no	Tree near		
4	W Oak " "	10 8	N 70 1/2 E S 70 W	112 60	
5	Black Oak Post in road	8	N	28	
6	Post in road				
7	Cottonwood Soft Maple double	26 5	N 67° W S 41° 15' W	149 37	
8	Post in ground				
9	Post in ground				

CERTIFICATE OF SURVEY.

STATE OF WISCONSIN, }
GRANT COUNTY, } ss.

I, J. C. Scott

County Surveyor in and for the County

and State aforesaid, do hereby certify that I have executed the Survey represented by the foregoing Plat and annexed Field Notes of Survey, in accordance with the State Laws and Instructions of the Commissioner of the General Land Office. Scale, 80 chains to 4 inches. The figures in red ink are the lengths of the lines as stated in the Field Notes of the Government Survey.

Declination of the Magnetic Meridian from the True Meridian East. The variation of needle adopted in establishing corners is 7° 26' East.

WITNESS my hand this 16th day of May A. D. 1881

R. R. Swate
Benj. Reed

CHAINMEN.

J. C. Scott

SURVEYOR.