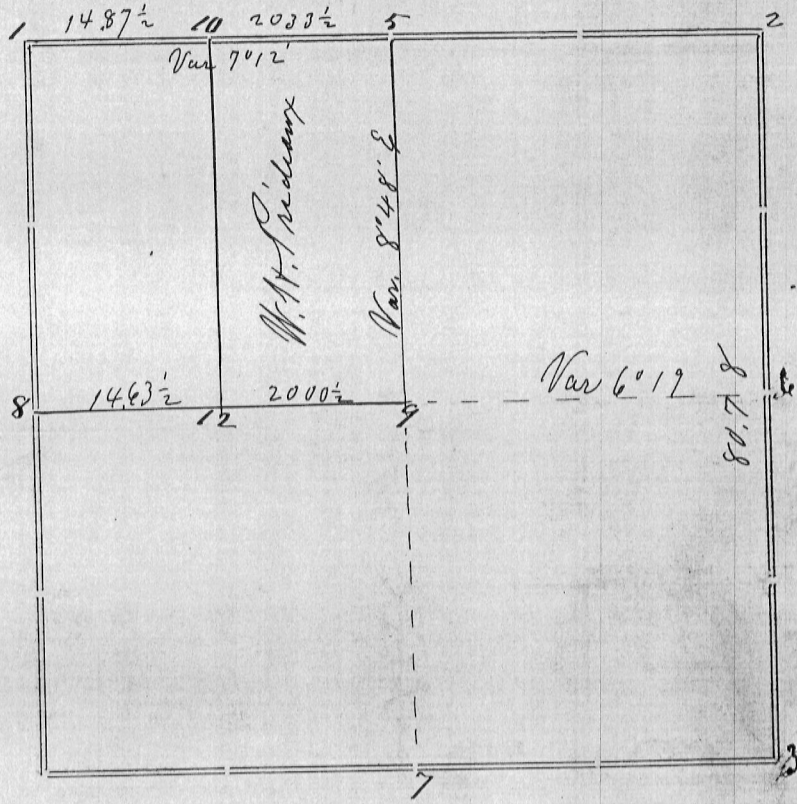


Section 7 Township 4 NORTH Range 4 WEST OF 4TH P.M.



Corners	Bearing Trees	In. Dia.	Courses they Bear	Links Distant	REMARKS
1	Set rock at supposed corner				No trace of corner except as indicated by fences and tradition
2	Made no corner but judged its position by correct old fences				
3 6	Made no corner				
5	Br Oak set stake in stream	8	S 56 3/4 E	130	Corner found by stump of original Bearing tree
3	Set Stone				Corner found by the N.E. Bearing tree - still good
7					Corner found by Br Oak bearing tree stump
8	Black Oak set stake	10	N 74 E	35 1/2	Found by stump of one bearing (N.W.)
		10	S 46 E	42 1/2	
9	Br Oak	12	S 28 3/4 E	72	
	"	6	S 70 W	80 1/2	
10	Set oak stake made of old nail.				
12	Black Oak	6	N 36 E	18	
	"	"	" 36 1/2 W	16 1/2	

CERTIFICATE OF SURVEY.

STATE OF WISCONSIN, } ss.
 GRANT COUNTY, }
 I, Joel Barber, County Surveyor in and for the County and State aforesaid, do hereby certify that I have executed the Survey represented by the foregoing Plat and annexed Field Notes of Survey, in accordance with the State Laws and Instructions of the Commissioner of the General Land Office. Scale, 80 chains to 4 inches. The figures in red ink are the lengths of the lines as stated in the Field Notes of the Government Survey.

Declination of the Magnetic Meridian from the True Meridian East. The variation of needle adopted in establishing corners is 8° 31' East.

WITNESS my hand this 15th day of June A. D. 1880.

George Bandworth }
Waldo Briggs } CHAINMEN.

Joel Barber SURVEYOR.