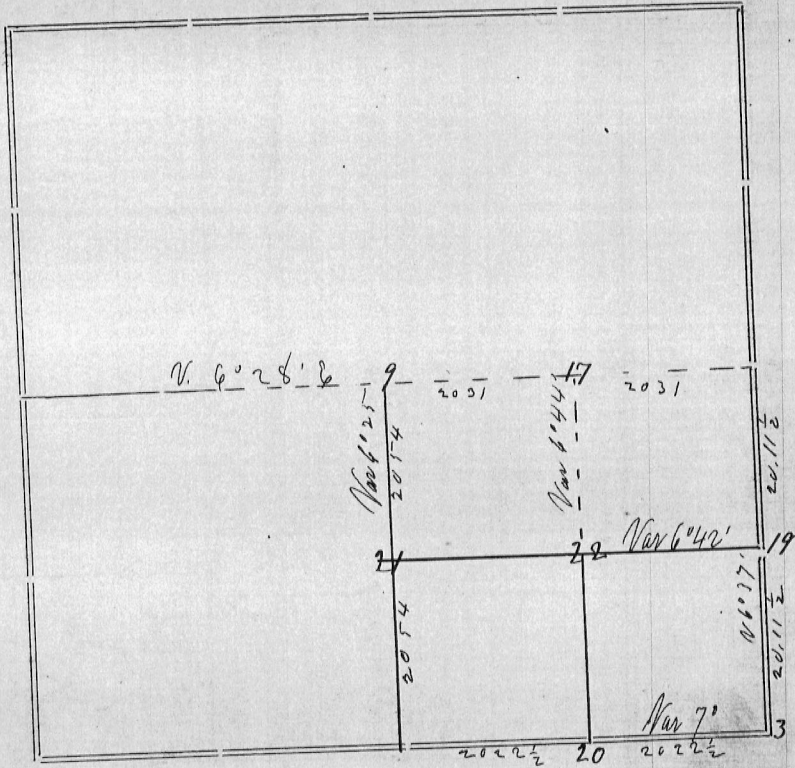


Section 33 Township 8 North Range 1 West of 4th P.M.



Corners	Bearing Trees	In. Dia.	Courses they Bear	Links Distant	REMARKS
21	Brown Oak	13	S 60 1/2 E	48	
	" "	4	S 87 E	27	
20	White Oak	6	N 20 1/2 E	112 1/2	
	Brown Oak	5	S 60 W	112	
22	W Oak	9	N 84 E	26	
	Brown Oak	4	S 8 3/4 W	47	
19	White Oak	1 1/2	S 24 1/2 W	15 1/2	Set for No 24 page 59 Book D.
	Brown Oak	8	S 82 E	141	
17	Brown Oak	8	N 45 W	636	
	W Oak	8	N 81 E	36	
3	Original corner				Bearings both good
7	Old corner State Yellow Oak	30	N 42 W	2 1/2 13	

Surveyed May 20th 1880
for Zica & Zychek

CERTIFICATE OF SURVEY.

STATE OF WISCONSIN, } ss.
GRANT COUNTY, }

I, Joel Barber, County Surveyor in and for the County and State aforesaid, do hereby certify that I have executed the Survey represented by the foregoing Plat and annexed Field Notes of Survey, in accordance with the State Laws and Instructions of the Commissioner of the General Land Office. Scale, 80 chains to 4 inches. The figures in red ink are the lengths of the lines as stated in the Field Notes of the Government Survey.

Declination of the Magnetic Meridian from the True Meridian East. The variation of needle adopted in establishing corners is 8° 30' East.

WITNESS my hand this 7th day of June A. D. 1880.

Wagon Boeck } CHAINMEN.
John Zychek }

Joel Barber SURVEYOR.