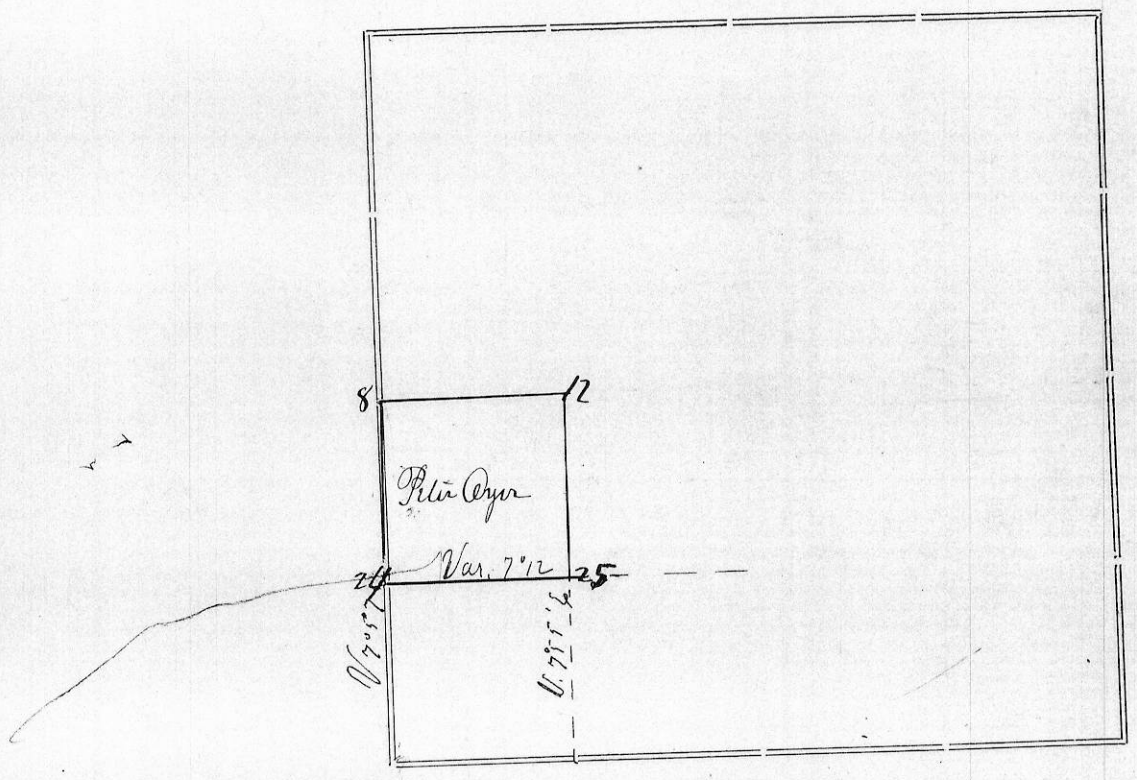


Section 14 Township 1 North Range 2 West of A.T.H. P.M.



REMARKS					
Corners	Bearing Trees	In. Dia.	Courses they Bear	Links Distant	
8	Br Oak	10	S 8 W	34	Cut - stump sound and marked Tree in good condition
	" "	11	N 73 E	58	
12	Large Cedar				post set by Smead on corner made by H.A. Wittke Co. Surveyor
24	Br Oak	12	N 10 1/2 E	9	Set rock 14 x 12 x 10
	" "	7	S 8 1/2 W	37	
25	White Oak	8	S 65 7/8 W	94	
	Br Oak	7	S 65 E	45	

Surveyed for Peter Oyer
April 13th 1880

Certificate issued Apr 14th 1880

CERTIFICATE OF SURVEY.

STATE OF WISCONSIN, } ss.
GRANT COUNTY,

I, Joel Barber, County Surveyor in and for the County and State aforesaid, do hereby certify that I have executed the Survey represented by the foregoing Plat and annexed Field Notes of Survey, in accordance with the State Laws and Instructions of the Commissioner of the General Land Office. Scale, 80 chains to 4 inches. The figures in red ink are the lengths of the lines as stated in the Field Notes of the Government Survey.

Declination of the Magnetic Meridian from the True Meridian East. The variation of needle adopted in establishing corners is 8° 31' East.

WITNESS my hand this 14 day of April A. D. 1880

Herman Kopel
Isa Smith } CHAINMEN.

Joel Barber SURVEYOR.