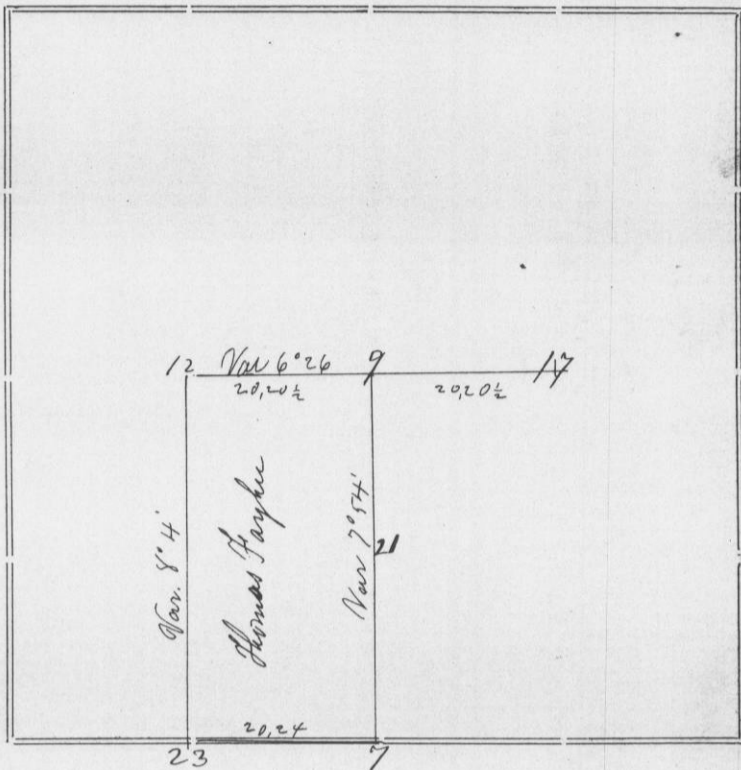


Section 13 Township 3 North Range 4 West of 4th R. M.



Corners	Bearing Trees	In. Dia.	Courses they Bear	Links Distant	REMARKS
12	Hickory R. Oak	8 8	N 34 1/2 W S 69 W	22 14 1/2	old bearing New " } Corner Set by Overton Co Surveyor
9	White Oak "	32 8	N 14 1/2 W N 61 E	88 64 1/2	Corner set equidistant from 12+17
23	Black Oak Hickory	10 7	S 31 W N 12 7/8 E	39 26	Established by Solomon Goodrich 1855
17	Sugar W Oak	12 8	S 25 E S 3 E	81 41 1/2	Established by Overton
7	Hickory Cottonwood	13 36	N 54 W S 7 1/2 E	30 13	Found Stamp of one supposed B.T. No 17 S 29 1/2 E 17
21	White Oak Hickory	16 8	N 32 1/2 W S 59 E	19 26	omitted by mistake from Hughes certificate
Surveyed for Thomas Fayler March 24 th 1880					

STATE OF WISCONSIN, }
GRANT COUNTY, } ss.

CERTIFICATE OF SURVEY.

I, Joel Barber, County Surveyor in and for the County

and State aforesaid, do hereby certify that I have executed the Survey represented by the foregoing Plat and annexed Field Notes of Survey, in accordance with the State Laws and Instructions of the Commissioner of the General Land Office. Scale, 80 chains to 4 inches. The figures in red ink are the lengths of the lines as stated in the Field Notes of the Government Survey.

Declination of the Magnetic Meridian from the True Meridian East. The variation of needle adopted in establishing corners is 8° 21' East.

WITNESS my hand this 25th day of March A. D. 1880

..... } CHAINMEN. Joel Barber SURVEYOR.