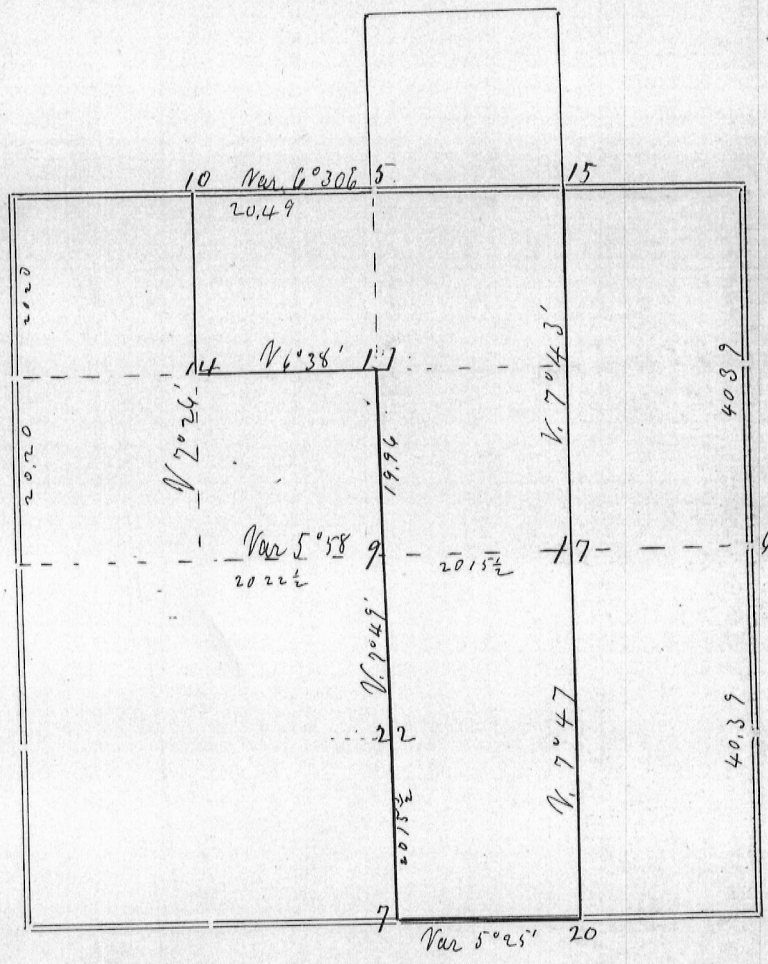


Section 27 Township 8 North Range 2 West of 4th P. M.



Corners	Bearing Trees	In. Dia.	Courses they Bear	Links Distant	REMARKS
5	N Oak W "	28 16	S 14 W N 76 E	51 34	Original - both trees good
6	No corner	-	made	equidistant from 12 to 4	
7	Black Oak Aspen	8 6	N 57 1/2 E N 42 E	56 7	found by one Original B. S. Stump (B Oak N 6)
9	No bearings				
10	Red Oak Br Oak	10 6	N 15 W S 50 E	31 8	
11	Willow Oak "	7 7	N 29 3/4 W N 32 1/4 E	24 22 1/2	
14	Black Oak Br Oak	28 12	S 87 1/2 E N 45 1/4 E	41 59	
15	B Walnut "	15 16	N 68 1/2 E S 15 1/2 W	30 15	Old corner set by Wm. A. Reed.
17	Elm Aspen	8 7	N 12 E N 68 E	20 3	
20	Br Oak	9	N 22 W	61	Set by W. A. Reed
22	Black Oak "	14 8	S 40 W N 23 W	46 1/2 45 1/2	

Surveyed for J B Moore
March 12th to 16th 1880

CERTIFICATE OF SURVEY.

STATE OF WISCONSIN, } ss.
GRANT COUNTY,

I, Joel Barber, County Surveyor in and for the County

and State aforesaid, do hereby certify that I have executed the Survey represented by the foregoing Plat and annexed Field Notes of Survey, in accordance with the State Laws and Instructions of the Commissioner of the General Land Office. Scale, 80 chains to 4 inches. The figures in red ink are the lengths of the lines as stated in the Field Notes of the Government Survey.

Declination of the Magnetic Meridian from the True Meridian East. The variation of needle adopted in establishing corners is 8° 30' East.

WITNESS my hand this 22nd day of March A. D. 18. 80.

E. H. Williams
E. G. Williams } CHAINMEN.

Joel Barber SURVEYOR.