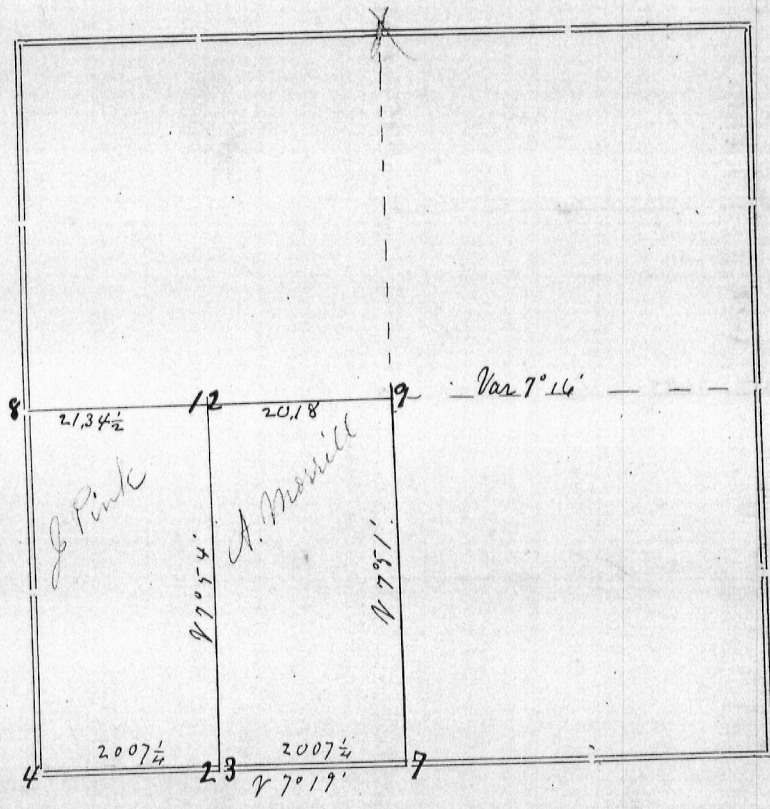


Section 31 Township 4 North Range 3 WEST OF 4TH P.M.



Corners	Bearing Trees	In. Dia.	Courses they Bear	Links Distant	REMARKS
4	Elm Sugar	7 8	S 11 W N 6 1/2 E	8.1 64 1/2	Original bearing - now about 28 inches New bearing taken by me about 1876
7	Sugar Elm	6 24	N 56 W S 17 E	37 4	Original - now about 16 inches and remarked New
8	Butternut "	12 10	N 31 E S 67 1/2 E	67 82 1/2	From Survey on Page 8 this volume Regarded as common to both townships - See No 2 page 8
9	Sugar "	14 12	N 56 E S 40 1/2 E	77 78	
12	Br Oak	12	N 43 1/2 E	93	No other near
23	Red Elm "	7 14	S 88 W N 11 E	4 38 1/2	

Surveyed for John Pink and
Hanson Marshall
Jan 23d 1880

CERTIFICATE OF SURVEY.

STATE OF WISCONSIN, }
GRANT COUNTY, } ss.

I, Joel Barber, County Surveyor in and for the County and State aforesaid, do hereby certify that I have executed the Survey represented by the foregoing Plat and annexed Field Notes of Survey, in accordance with the State Laws and Instructions of the Commissioner of the General Land Office. Scale, 80 chains to 4 inches. The figures in red ink are the lengths of the lines as stated in the Field Notes of the Government Survey.

Declination of the Magnetic Meridian from the True Meridian East. The variation of needle adopted in establishing corners is 8° 30' East.

WITNESS my hand this 26th day of January A. D. 1880.

Geo. Marlout
John Zentz } CHAINMEN.

Joel Barber SURVEYOR.