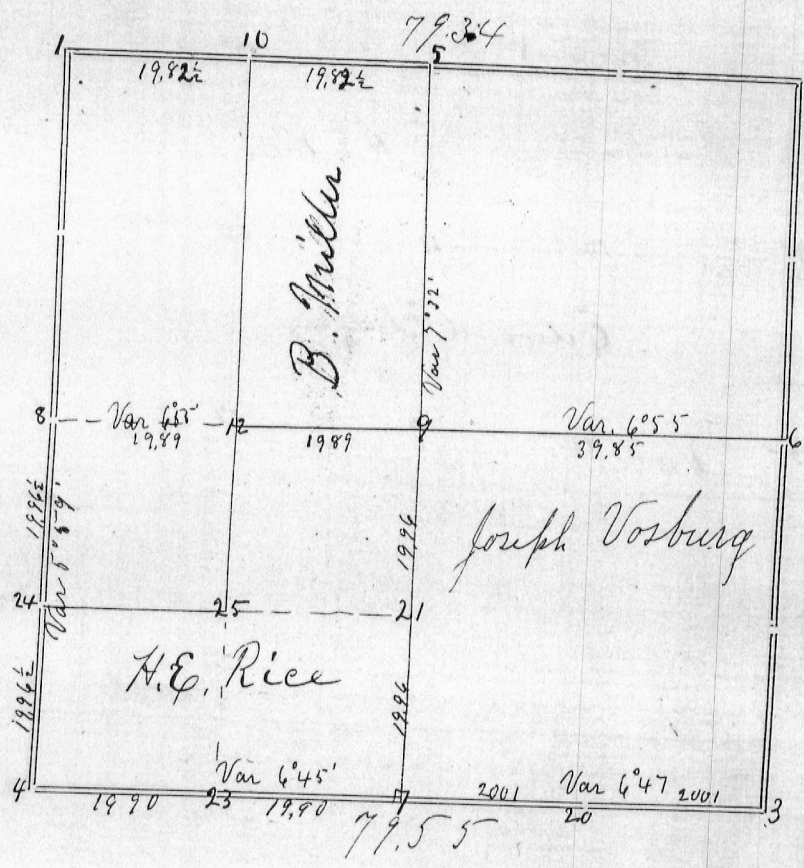


SECTION 29 Township 1 North Range 1 West of 4th P. M.



Corners	Bearing Trees	In. Dia.	Courses they Bear	Links Distant	REMARKS
3	Cherry	5	N 12 W	15	Set rock 16x12x10 Adopted the corner shown by residents and indicated by old fences.
4	Black Oak Rocks 16x9x5	6	S 45 W	2 1/2	found corner by stump of original bearing tree Yellow Oak 18 S 1° W 5 9 5
6	Rock lately set by S. Merrick				
7	Locust Locust Rock 16x10x8	10 7	S 30 1/2 E N 1 E	12 52 1/2	Found corner from one well known bearing tree Br. Oak 12 S 5 6 E 2.28 (used Var. 7° E)
9	Sugar Set rock 16x8x8	12	S 18 E	114 1/2	Set at intersection of straight quarter lines
8					corner only indicated by fences running to one agreed point
12	Elm	8	S 83. 3/4 E	72 1/2	
20	Rock 10 x 6 x 6				
21	Set rock at corner				
23					Set corner stone under nail fence
24	Br Oak Br Oak	6 12	S 31 1/2 W S 4 3/4 W	18 75	Set corner rock
25	Set Rock at corner			14 x 7 x 7	
5					corner stone replanted in mound of unquestioned authenticity
10	Cottonwood	20	West	9 1/2	Set corner stone 16x16x16 Finished May 22nd 1879

STATE OF WISCONSIN, ss.
GRANT COUNTY,

CERTIFICATE OF SURVEY.

I, Joel Barber County Surveyor in and for the County of Grant and State aforesaid, do hereby certify that I have executed the Survey represented by the foregoing plat and annexed Field Notes of Survey, in accordance with the State Laws and Instructions of the Commissioner of the General Land Office. Scale, 80 chains to 4 inches. The figures in red ink are the lengths of the lines as stated in the Field Notes of the Government Survey.

Declination of the Magnetic Meridian from the True Meridian is 8° 30' East. The variation of needle adopted in establishing corners is 8° 30' East.

WITNESS my hand this first day of June A. D. 18 79.

William Kuhl
Urias Williams
Wm H. Licht } CHAINMEN.

Joel Barber SURVEYOR.