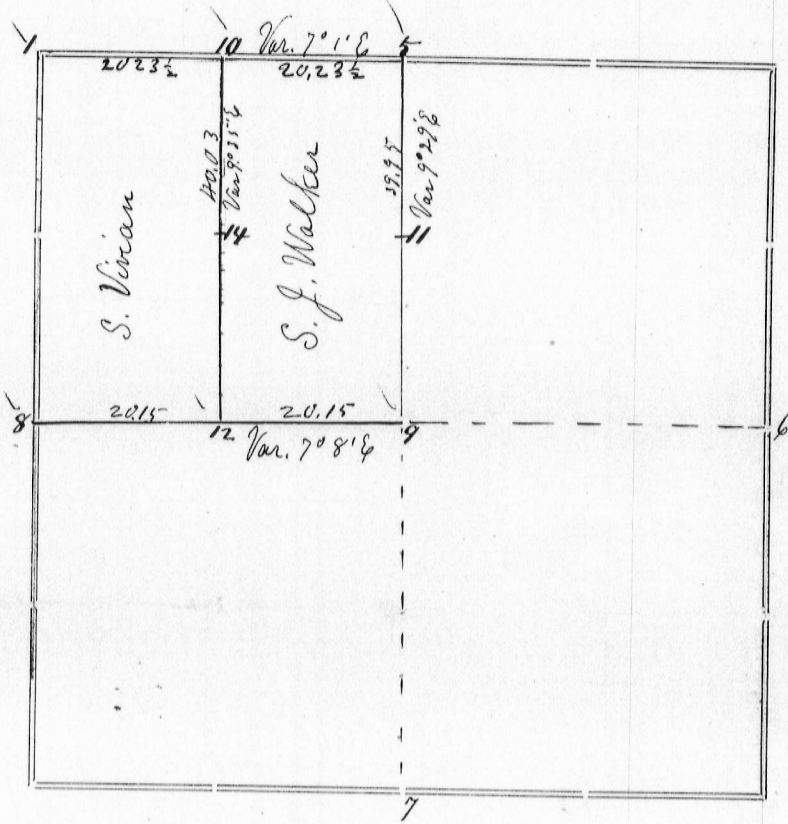


Section 14 Township 4 North Range 3 West of 4th P. M.



Corners	Bearing Trees	In. Dia.	Courses they Bear	Links Distant	REMARKS
1	White Oak Set a new	6	N 69 W Corner Stone	32	This is a tree marked by me some years ago when the position of the corner was known and the stone just removed
5					Ancient corner stone
6					All traces lost, but I took its position by measuring South 5 chains from S.E. corner of the County farm - Established no corner here
7	White oak stake		corner		Found by measuring whole section line - The alignment was established about one year ago for Geo. Stewart
8	Corner Stone found				Replaced it with a better one
9					Set a corner stone
10					Set a corner Stone
11					Set corner equidistant 5 to 9
12					Set a corner stone
14					Placed equidistant between Nos 10 + 12

STATE OF WISCONSIN, } ss.
GRANT COUNTY, }

CERTIFICATE OF SURVEY.

I, Joel Barber

County Surveyor in and for the County

and State aforesaid, do hereby certify that I have executed the Survey represented by the foregoing Plat and annexed Field Notes of Survey, in accordance with the State Laws and Instructions of the Commissioner of the General Land Office. Scale, 80 chains to 4 inches. The figures in red ink are the lengths of the lines as stated in the Field Notes of the Government Survey.

Declination of the Magnetic Meridian from the True Meridian East. The variation of needle adopted in establishing corners is 8° 30' East.

WITNESS my hand this Ninth day of September A. D. 18 78

D. H. Lauce
Joseph Gray

CHAINMEN.

Joel Barber SURVEYOR.