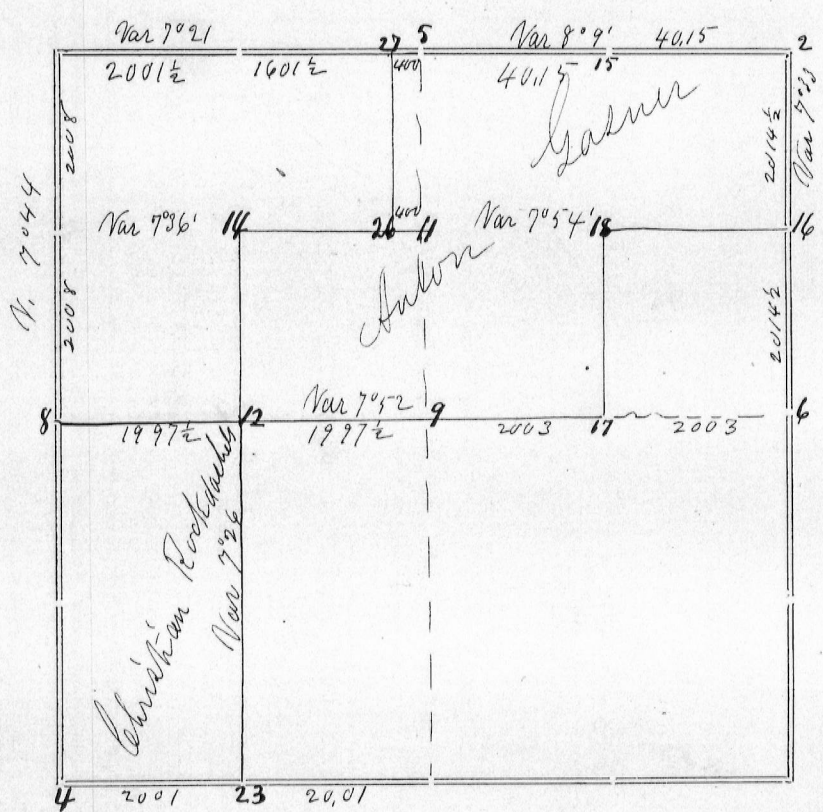


11-5-6



Corners	Bearing Trees	In. Dia.	Courses they Bear	Links Distant	REMARKS
2	Br Oak White "	7 26	N 53 E N 78 1/2 W	85 393	Both original bearings are standing but inconsistent with each other and irreconcilable. I disregard both and establish corner by measurement of adjacent lines
4	White Oak White "	24 28	S 27 W N 9 1/2 W	66 1/2 130	Original bearings both down and one entirely gone. This tree was a witness tree originally
5	Hickory W Oak	7 10	S 3 E S 84 1/2 W	476 204	Found one plainly marked B.T. (though filled) - N.W. instead of N.E. The other bearing not distinguishable
6	Black Oak White Oak	24 24	N 79 3/4 W S 23 1/2 W	87 167	The original Br Oak B.T. is standing though "deadened"
8	Br Oak "	10 11	S 5 W S 15 1/4 W	248 260	Bearings in good order. The corner now stands equidistant between two Hickories 4 inches thick and 7 links apart
9	Br Oak Red Oak	12 7	S 63 W S 24 W	85 64 1/2	
11	Hickory White Oak	12 7	N 9 E S 77 1/2 W	284 49	
12	White Oak Hickory	4 8	N 79 1/2 W N 15 1/2 E	22 55	Set Stone 30x6x3
14	White Oak	30	S 76 E	65 1/2	Set Stone 13x8x2 1/2
15	Hickory "	4 5	N 17 1/2 W N 20 E	67 1/2 72 1/2	Surveyed for Ch. Rockdashels March 2nd 1878 Surveyed for Anton Gamer March 5th & 6th 1878
16	White Oak "	8 25	N 3 1/2 E S 16 1/2 E	6 1/2 93	
17	W Oak	26	S 59 E	141	Set Stone 14x8x2 inches
18	W Oak	7	N 56 1/2 E	58	W Oak E N 11 E 57
23	Red Oak Sugar	13 16	S 24 E S 60 1/2 E	17 31	
24	Br Oak	5	N 78 E	38 1/2	Hick 14 N 52 1/2 E 243
27	W Oak W Oak	5 21	N 10 W S 6 5 W	8 64 1/2	

STATE OF WISCONSIN, }
GRANT COUNTY, } ss.

CERTIFICATE OF SURVEY.

I, Joel Barber, County Surveyor in and for the County and State aforesaid, do hereby certify that I have executed the Survey represented by the foregoing Plat and annexed Field Notes of Survey, in accordance with the State Laws and Instructions of the Commissioner of the General Land Office. Scale, 80 chains to 4 inches. The figures in red ink are the lengths of the lines as stated in the Field Notes of the Government Survey.

Declination of the Magnetic Meridian from the True Meridian East. The variation of needle adopted in establishing corners is 8° 20' East.

WITNESS my hand this 15th day of March A. D. 1878.

George Host
Charles Rockdashels } CHAINMEN.

Joel Barber SURVEYOR.