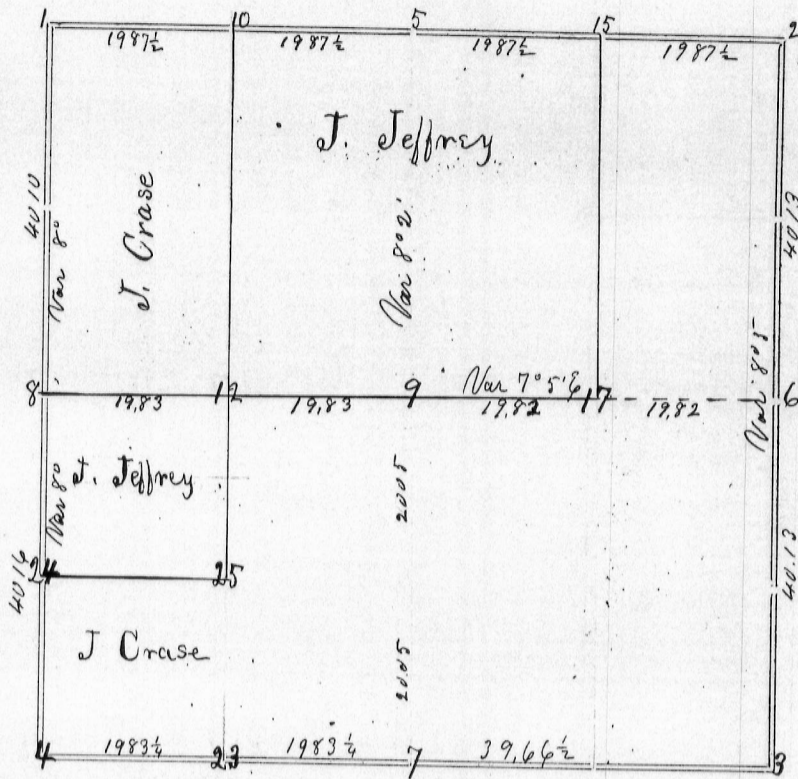


Section 26 Township 6 North Range 1 West of 4th P. M.



Corners	Bearing Trees	In. Dia.	Courses they Bear	Links Distant	REMARKS
1	Set corner	rock			Established by measure from surrounding corners. The nearest quarter section corner being used in each case.
2	Set stake				Corner identified by stumps of original bearings.
4	Set rock				Corner fully identified.
6	Set stake				Corner located by running and measuring the entire section line between sections 25 + 26.
7	Set stake				Set at centre of straight line between sections 26 + 35.
8	Set corner	stone			Original bearings extant - but the Br. Oak is filled.
9	Set stake	without bearings			at intersection of straight quarter lines.
10	Set corner	stone		18 x 10 x 7	
12	Set stake	- no bearings			
15	Black Oak Black Oak	7 7	S 14 1/2 W S 4 E	78 65 1/2	Also set large corner stone.
17	White Pine	2	S 75 3/4 W	195	Also set corner stone.
23	Set stake				
24	Black Oak Br. Oak	10 8	S 65 1/2 W N 40 E	12 30	Also set corner stone 14 x 8 x 4.
25	Set corner	stone			Surveyed for Joseph Crase + John Jeffrey Oct 10 11 + 12

STATE OF WISCONSIN, } ss.
 GRANT COUNTY, }
 I, Joel Barber, County Surveyor in and for the County and State aforesaid, do hereby certify that I have executed the Survey represented by the foregoing Plat and annexed Field Notes of Survey, in accordance with the State Laws and Instructions of the Commissioner of the General Land Office. Scale, 80 chains to 4 inches. The figures in red ink are the lengths of the lines as stated in the Field Notes of the Government Survey.

Declination of the Magnetic Meridian from the True Meridian..... East. The variation of needle adopted in establishing corners is 8° 20' East.

WITNESS my hand this 16th day of October A. D. 18 77.

Q. Thomas
George Stevens } CHAINMEN.
Joel Barber SURVEYOR.