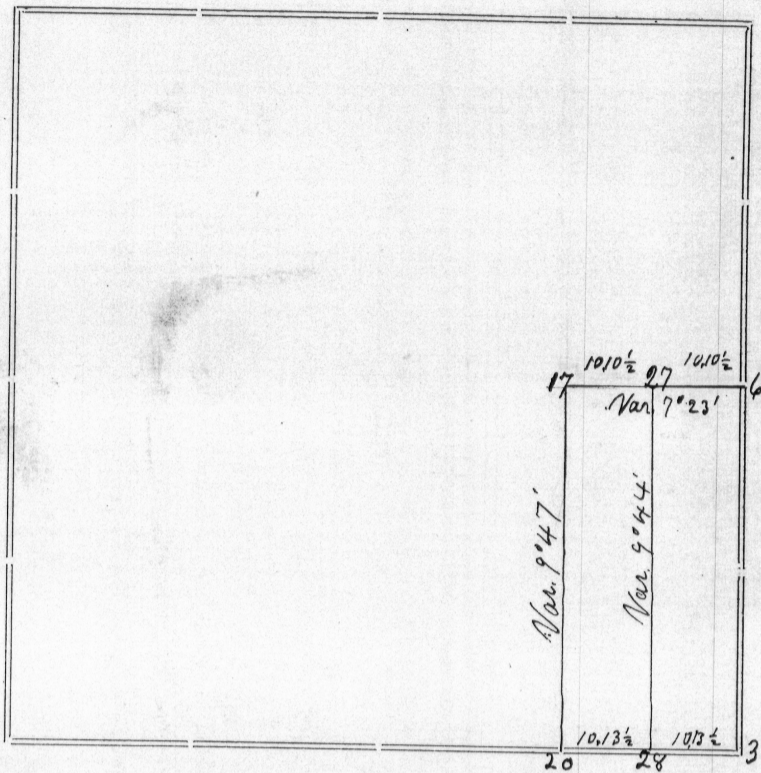


Section 23 Township 4 North Range 4 West of 4th P. M.

11



Corners	Bearing Trees	In. Dia.	Courses they Bear	Links Distant	REMARKS
3	Black Cherry White Oak	12 7	S 79° W N 15° W	21 9	New. Corner identified by White Oak 150 N 87 E 157 yet good. Marked aspen 8 for corner.
6	White Oak White Oak	7 5	S 65° E S 67 1/2° W	25 8	New bearings to old corner
17	Black Oak Sugar tree	17 10	N 15° E West	28 62	This is the corner set by James G. Freeman County Surveyor bearings yet in good order.
20	White Oak White Oak	8 8	S 25° W N 47° W	20 1/2 39	Corner previously set by myself in Survey No. 914 Volume C
27	Stake set		without bearings		
28	White Oak Hickory	4 6	N 12° W S 88° W	5 48	

Surveyed May 13th 1876 for Pass Sec. 7 Jr.

STATE OF WISCONSIN, }
GRANT COUNTY, } ss.

CERTIFICATE OF SURVEY.

I, Joel Barber, County Surveyor in and for the County and State aforesaid, do hereby certify that I have executed the Survey represented by the foregoing Plat and annexed Field Notes of Survey, in accordance with the State Laws and Instructions of the Commissioner of the General Land Office. Scale, 80 chains to 4 inches. The figures in red ink are the lengths of the lines as stated in the Field Notes of the Government Survey.

Declination of the Magnetic Meridian from the True Meridian East. The variation of needle adopted in establishing corners is 8° 30' East.

WITNESS my hand this 12th day of January A. D. 1877

N. H. Suttle
R. T. Crossley } CHAINMEN.

Joel Barber SURVEYOR.