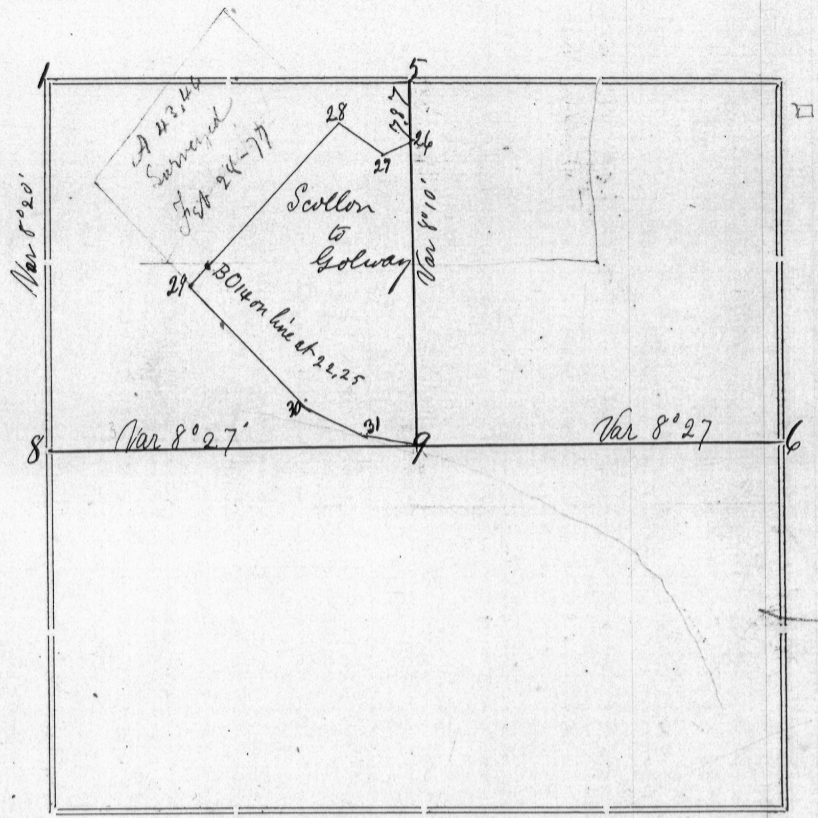


Section 14 Township 2 North Range 3 West of 4th P.M.



| Corners | Bearing Trees  | In. Dia. | Courses they Bear   | Links Distant | REMARKS   |
|---------|----------------|----------|---------------------|---------------|---|
| 1       | Rock corner    |          | Set by J W Blanding |               | While one good bearing tree remained  |
| 6       | Black Walnut   | 12       | S 63 1/2 W          | 127 1/2       | Corner re established from the stumps of the original bearing trees               |
|         | " "            | 5        | N 85 1/2 W          | 89            |   |
| 8       | Cottonwoods    | 10       | N 86 E              | 40            | Original bearings found decayed and new ones taken                                |
|         | " "            | 8        | S 15 E              | 63            |   |
| 9       | Blk Oak        | 7        | S 45 E              | 17            | Corner equidistant from 6 to 8 - there being no 1/4 post on south side of section |
|         | " "            | 6        | N 50 3/4 W          | 52            |   |
| 26      | Blk Oak Walnut | 10       | N 87 W              | 41            | A rock below the road adopted as the corner and bearings taken                    |
|         | " "            | 8        | N 40 3/4 E          | 86            |   |
| 27      | Burr Oak       | 6        | Corner tree         |               |   |
| 28      | Burternut      | 10       | N 28 E              | 73            |   |
|         | " "            | 12       | S 5 3/4 E           | 90            |   |
| 29      | Birch Willow   | 10       | N 83 3/4 E          | 65            |   |
|         | " "            | 4        | N 5 3/4 W           | 83            |   |
| 30      | Br Oak Ash     | 12       | N 12 W              | 132 1/2       |   |
|         | " "            | 8        | N 66 E              | 70            |   |
| 31      | Black Oak      | 4        | Corner tree         |               |   |

Description of piece of land sold by James Scollon to J. Galway  
 commencing at a point 737 South of 1/4 post between Secs 11 + 14 of T 2 R 3 W  
 and running thence S 78 1/2 W 34.5 N 65 3/4 W 74.3 - S 42 1/2 W 25.30 S 46 1/2 E 17.50 S 66 3/4 E 6.32  
 S 78 E 86.4 S 1/4 quarter post in centre of sec 14 North 32.97 to place of beginning  
 containing 62 acres

CERTIFICATE OF SURVEY.

STATE OF WISCONSIN, } ss.  
 GRANT COUNTY, }  
 I, Joel Barber, County Surveyor in and for the County  
 and State aforesaid, do hereby certify that I have executed the Survey represented by the foregoing Plat and annexed Field Notes of Survey, in  
 accordance with the State Laws and Instructions of the Commissioner of the General Land Office. Scale, 80 chains to 4 inches. The figures  
 in red ink are the lengths of the lines as stated in the Field Notes of the Government Survey.

Declination of the Magnetic Meridian from the True Meridian ..... East. The variation of needle adopted  
 in establishing corners is 8° 10' East.

WITNESS my hand this 26 day of December A. D. 1876.

John J. Galway  
Charles Utterich } CHAINMEN.  
Joel Barber Co. SURVEYOR.