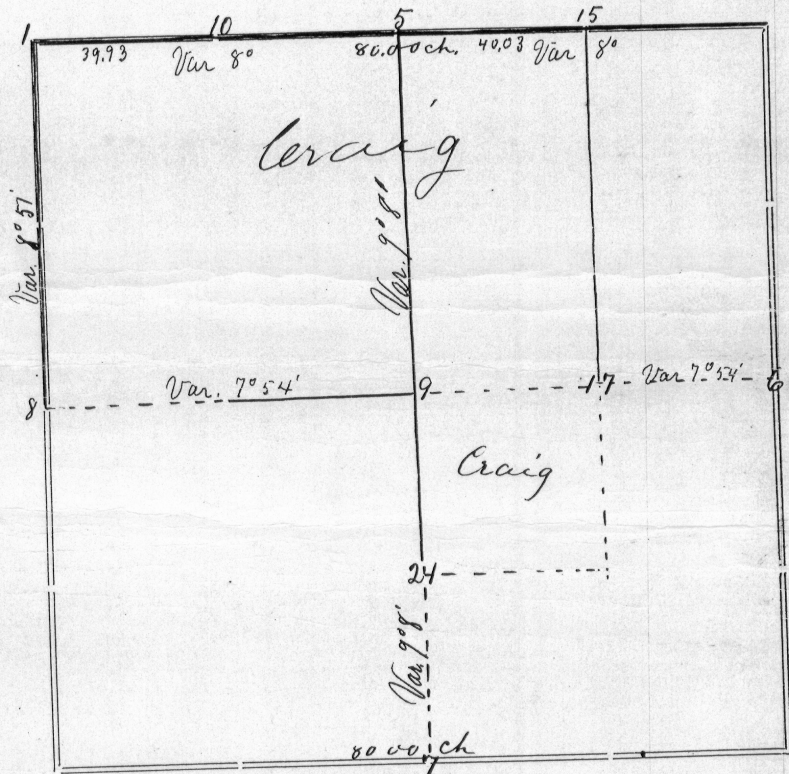


Section 8 Township 3 North Range 4 West of 4th P. M.



Corners	Bearing Trees	In. Dia.	Courses they Bear	Links Distant	REMARKS
1	Box Elder Elm Black Cherry	12 10 6	S 71 E N 52 W S 6 1/2 W	262 258 98	No trace of the original bearings to this corner could be found but I accepted a corner carefully located by James Wilson of Cassville and took these bearings
5					Ancient Stone mound but bearings gone
6	White Oak White Oak	14 13	N 13 W N 52 E	76 78 1/2	One original Lynn Bearing tree remains and I found a stone set at the corner
7	Red Elm White Oak	11 13	N 10 1/2 E N 43 E	61 55	Both original bearing trees down
8	White Oak Red Oak	20 5	N 5 1/2 W N 80 1/4 E	110 47	Original bearings gone but the stumps remain
9	Butternut Butternut	6 6	S 5 E N 50 E	24 38	
10	Elm Double Elm	8 12	N 44 E N 1/4 W	232 251	
15	Hickory Ash	7 7	S 1/4 E N 82 3/4 W	24 39	
21	White Oak White Oak	12 12	N 54 E S 49 W	5 30	

CERTIFICATE OF SURVEY.

STATE OF WISCONSIN, ss.
GRANT COUNTY,

I, Joel Barber, County Surveyor in and for the County and State aforesaid, do hereby certify that I have executed the Survey represented by the foregoing Plat and annexed Field Notes of Survey, in accordance with the State Laws and Instructions of the Commissioner of the General Land Office. Scale, 80 chains to 4 inches. The figures in red ink are the lengths of the lines as stated in the Field Notes of the Government Survey.

Declination of the Magnetic Meridian from the True Meridian..... East. The variation of needle adopted in establishing corners is 8 3/4 East.

WITNESS my hand this 12th day of January A. D. 1876

Charles A. Williams
R. Emersoll } CHAINMEN.

Joel Barber SURVEYOR.