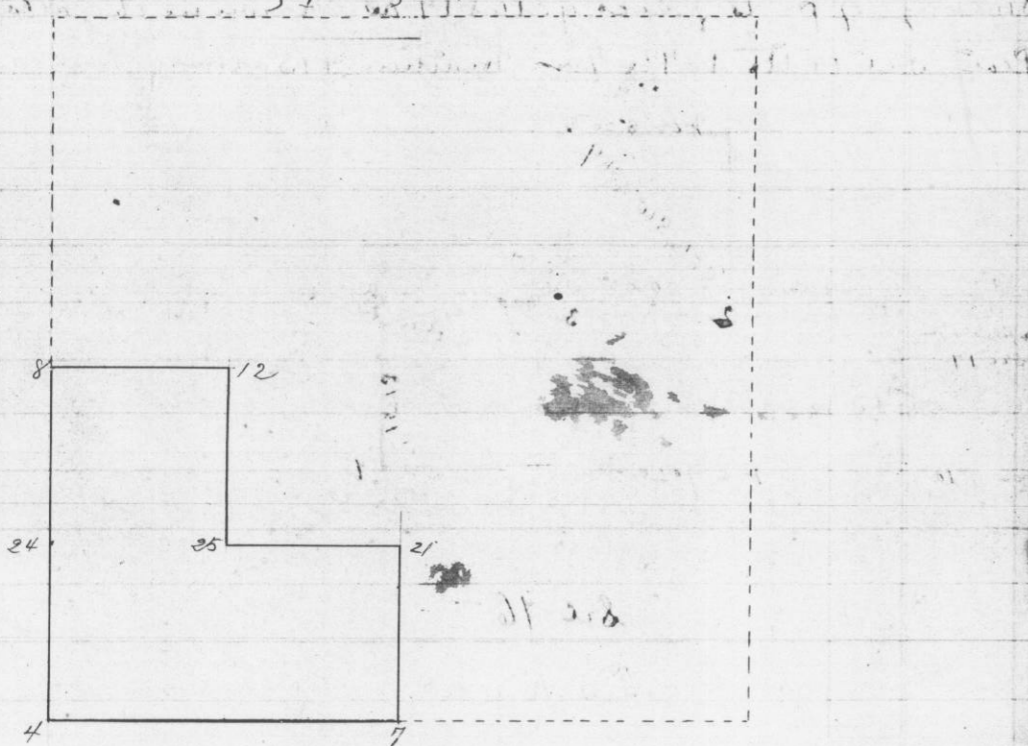


Sec 1, T 4, R 6



Survey made for Ebenezer Wood on the 4th Nov. 1886

- 4 } W O 6 S 45° W 42 1/2
- " " 6 N 20° W 19 1/2
- 7 } Original one tree standing
- 8 } Original
- 12 } W O 6 S 45° W 42 1/2
- " " 6 N 20° W 19 1/2
- 21 } W O 7 S 72 3/4 W 67 1/2
- " " 13 O 12 N 72 1/4 W 57
- 24 } Sugar 24 S 27 E 19
- " " Ash 6 N 7 1/2 E 37 1/2
- 25 } White Oak 8 S 8 E 12
- " " " 6 S 87 E 14 1/2

at a ...