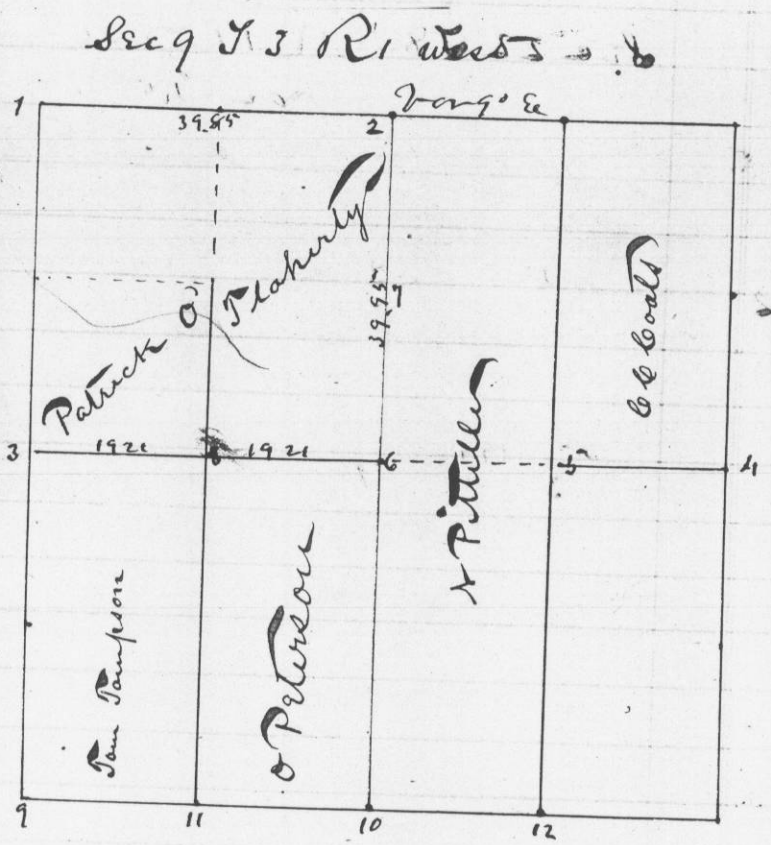


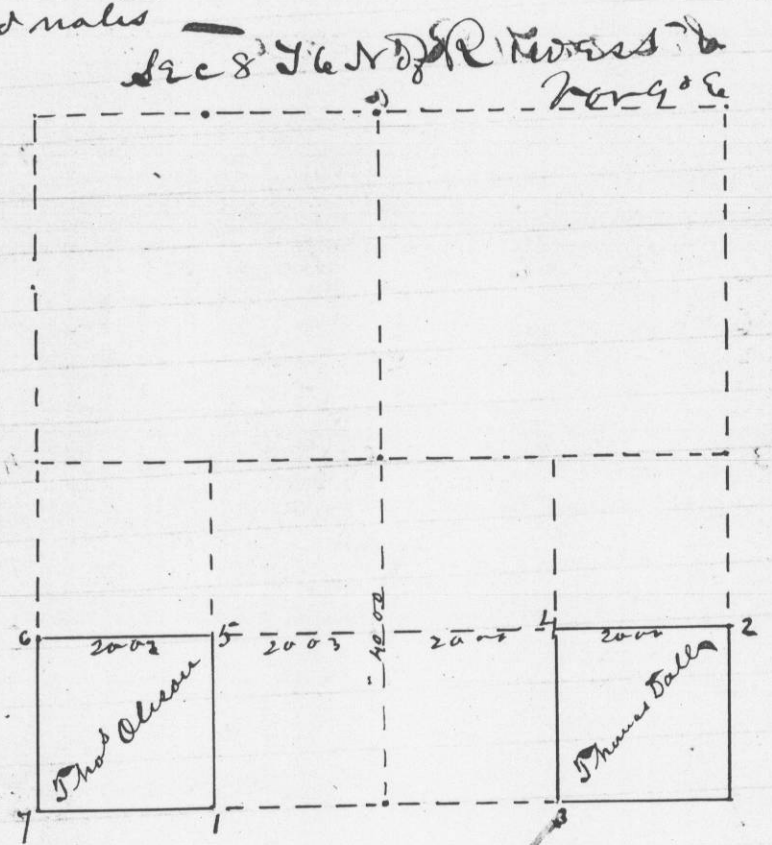
Survey made for Patrick O'Leaherty & others of part of Section 9 T 3 R 10 West as shown in the following plat and field notes Nov 1874



- Reference
- at 1 stone 5x8x18 inches
 - at 2 " 3x9x18 "
 - " 3 " 3x9x18 "
 - " 4 " 4x7x20 "
 - " 5 " 2x7x17 "
 - " 6 " 4x5x12 "
 - " 7 " 6x8x16 "
 - " 8 " 4x8x13 "
 - " 9 " 4x8x17 "
 - " 10 " 7x10x14 "
 - " 11 Prism shaped 9 "
 - " 12 stone 5x12x18 "
 - " 13 " 5x13x20 "

attest
 Geo W Hall
 County Surveyor
 per C T Overton
 Deputy

Survey made for Thos O'Leaherty of Sec 8 T 6 N R 10 W as shown in the following plat and field notes Nov 1874



- Reference
- at 1 Lime stone 3x13x16 inches
 - at 2 " " 8x10x24 "
 - " 3 " " 4x6x14 "
 - " 4 " " 3x10x20 "
 - " 5 " " 5x8x30 "
 - " 6 " " 4x10x22 "
 - " 7 " " 4x10x24 "

attest
 Geo W Hall
 County Surveyor
 per C T Overton
 Deputy