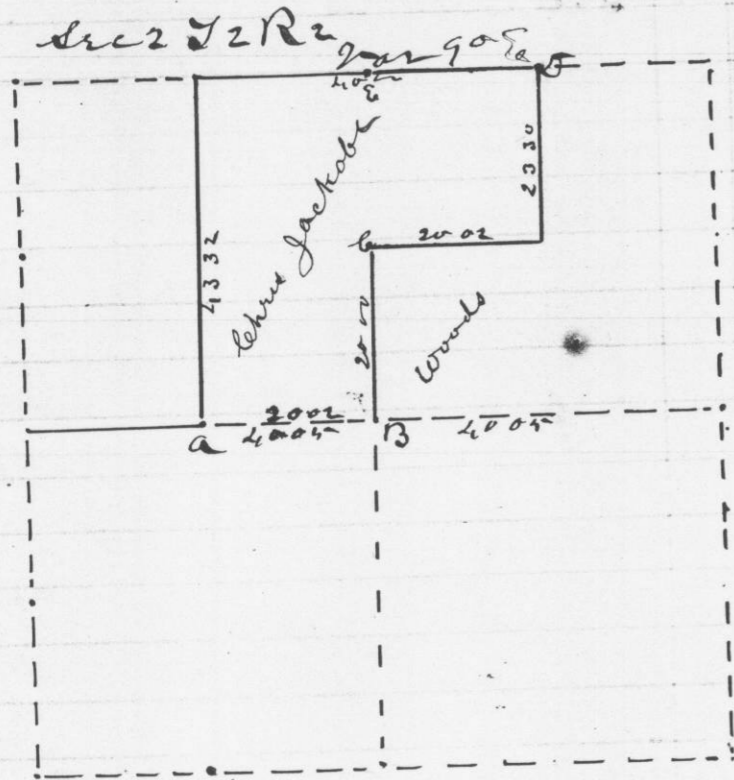


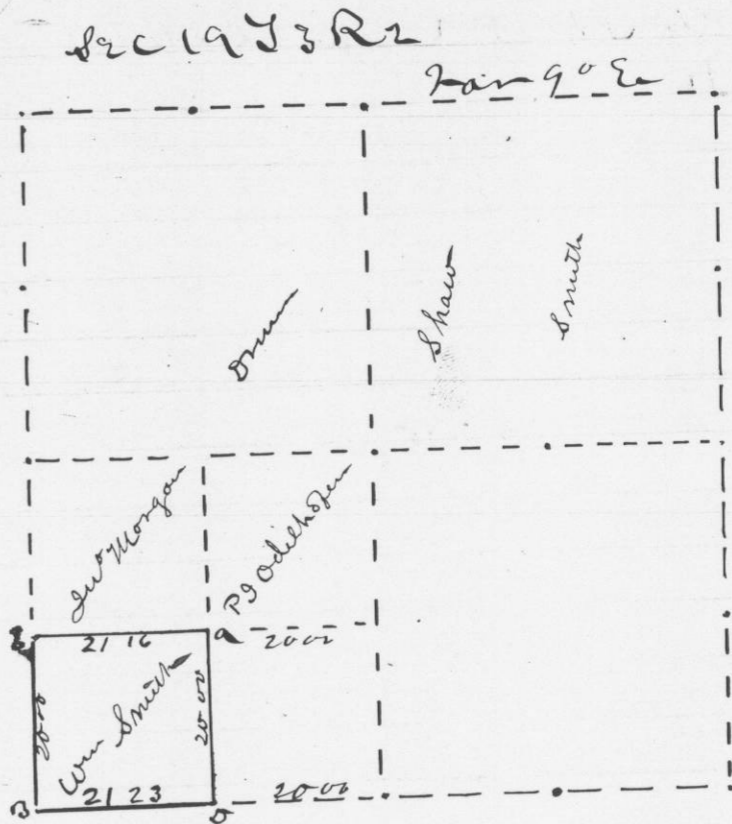
Survey made for Lewis Jackson May 15-16-1871  
 E 1/4 NW 1/4 and NW 1/4 Sec 2  
 T2R2 as shown in the following  
 diagrams and field notes



References  
 at a B 0 26 S 87° E 741 set as per instructions in statute  
 at B D 6 N 63° W 48  
 at c W 0 12 S 33° E 52  
 at D Junction 478 x 19

attest  
 Geo McFall  
 County Surveyor

Survey made for Wm Smith Nov 6th 1871  
 of SW 1/4 Sec 19 T3R2 as designated  
 by following plat and field notes



References  
 at D W 0 20 N 30° W 88  
 at a D 22 S 31° W 22  
 at c W 12 S 14° E 35  
 at B D 30 S 88° E 30

attest  
 Geo W C Fall  
 County Surveyor