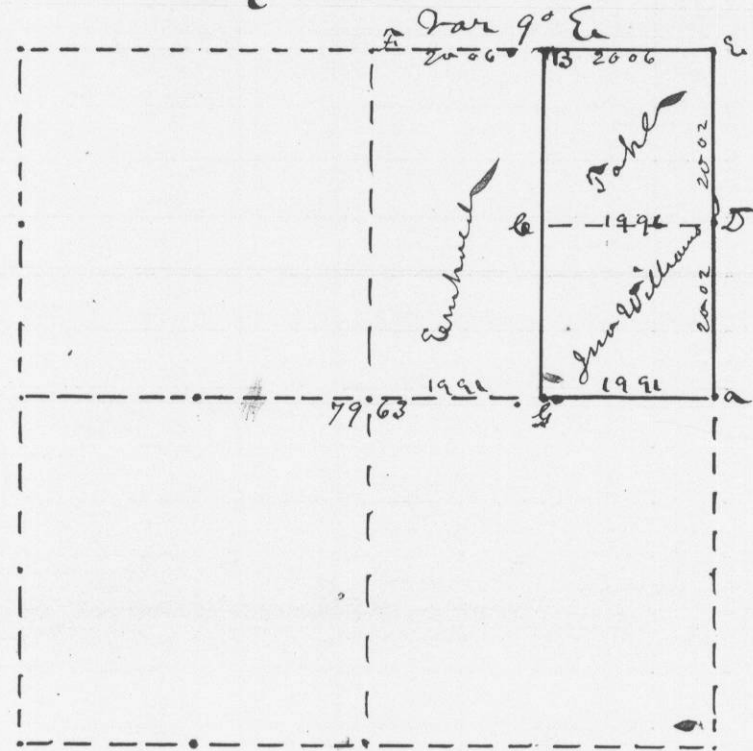


Survey made for Jno<sup>o</sup> Williams July 22d 1875  
of E 1/2 NW 1/4 Sec 29 T1R1 as shown  
in the following plat and field notes

Sec 29 T1R1



Reference

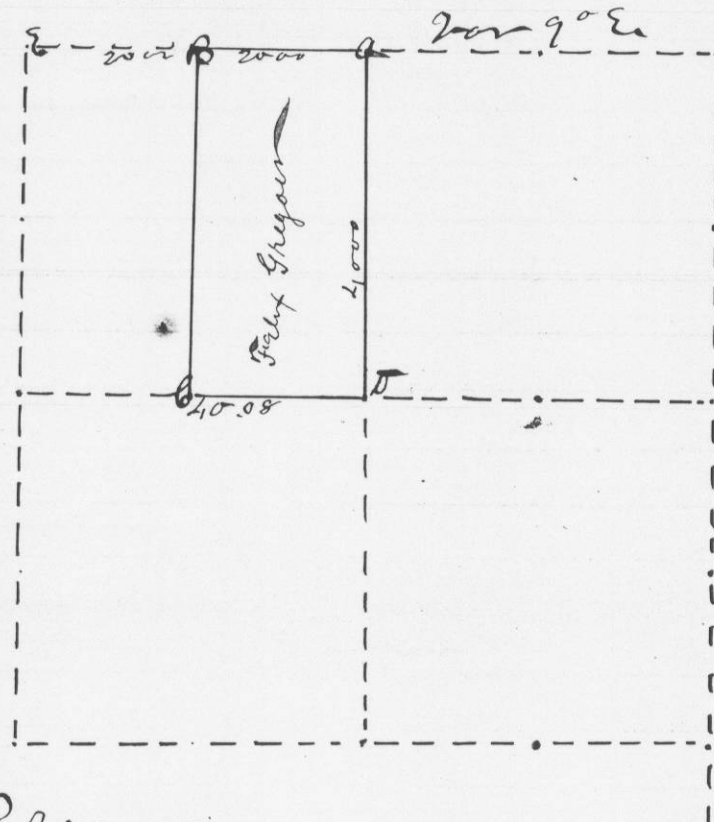
- at a border stake equal distant from a & b
- at c Cherry 8 S 58 E 63.
- at B stone 7 x 8 x 18 midway between c & d

attest

Gro McFall  
County Surveyor

Survey made for Felix Gregor Jan 13<sup>th</sup> 1874  
of E 1/2 NW 1/4 Sec 11 T2R3 as shown in the  
following plat and field notes

Sec 11 T2R3



Reference

- a on section boundary B 08 N 73 E 9 lks
- B R Elm 14 S 63 E 44 at equal distance from a & c
- c ash 10 N 10 W 47

attest

Gro McFall  
County Surveyor