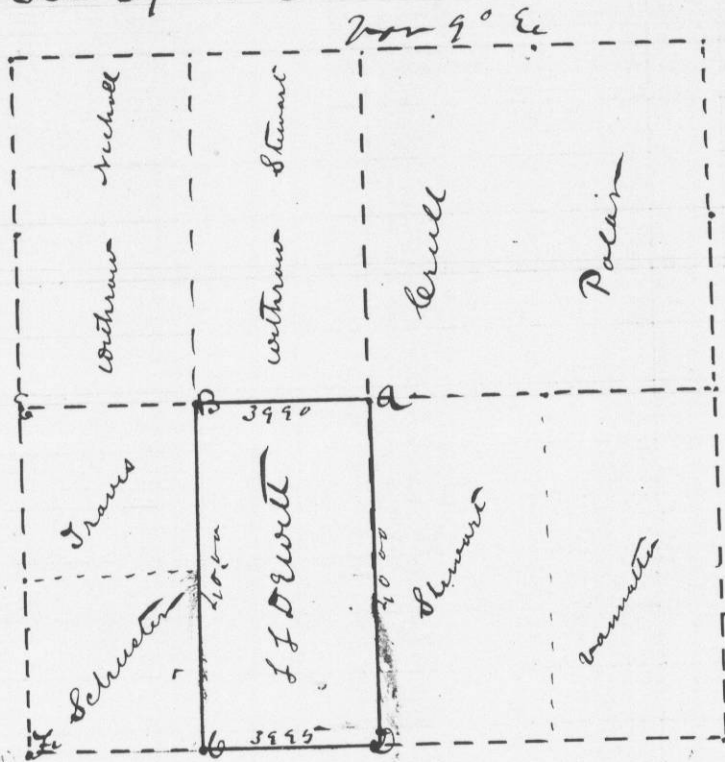


Survey made for L. L. Drivett May 11th 1873
of E 1/2 of SW 1/4 of sec 27 T3 R2 as shown
in the following plat and field notes

sec 27 T3 R2



References

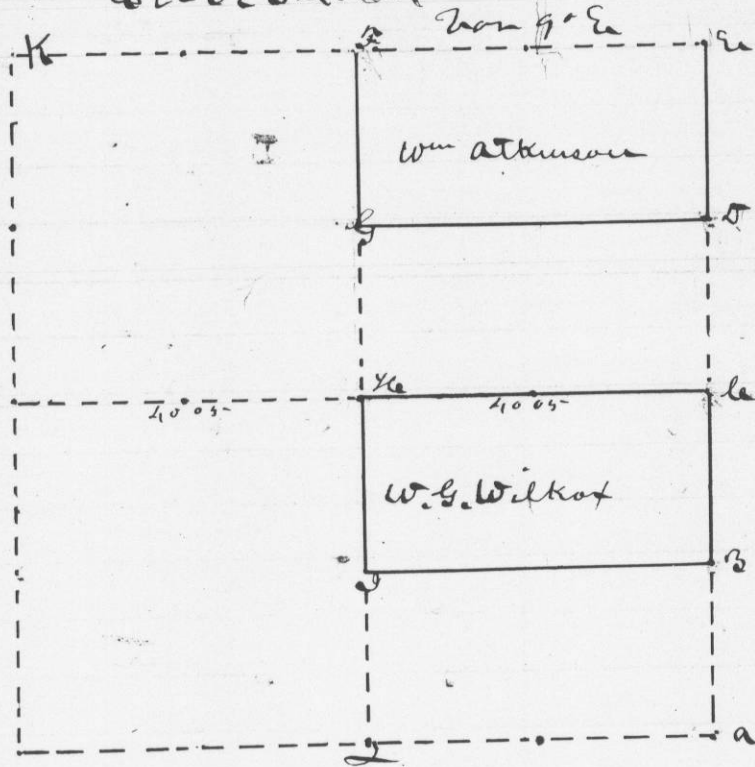
- at a center of section established by former survey
- at B Sagon 12 inches N 77° W 4 1/2 lks
- " c corner set by former survey
- " D original corner found

attest

Geo Mc Fall
County Surveyor

Survey made for W. G. Wilcox of 1/2 Sec 32
and for Wm Atkinson of 1/2 Sec 32 of
Town 3 N Range 2 E as shown in the following
plat and field notes

Sec 32 T3 R2



References

- at D set midway between c & e R 30 12 S 5° W 97
- at B c c c a & e do 16 S 15° W 83
- " c set cor of section of ad per statute in such case
and provided W 0 20 S 35° W 49
- " I set midway between h & j W 0 12 N 85° E 17
- " F set on sec cor run due from e & h R 30 10 S 5° E 36
- " G W 0 0 N 75° E 7 lks

attest

Geo Mc Fall
County Surveyor