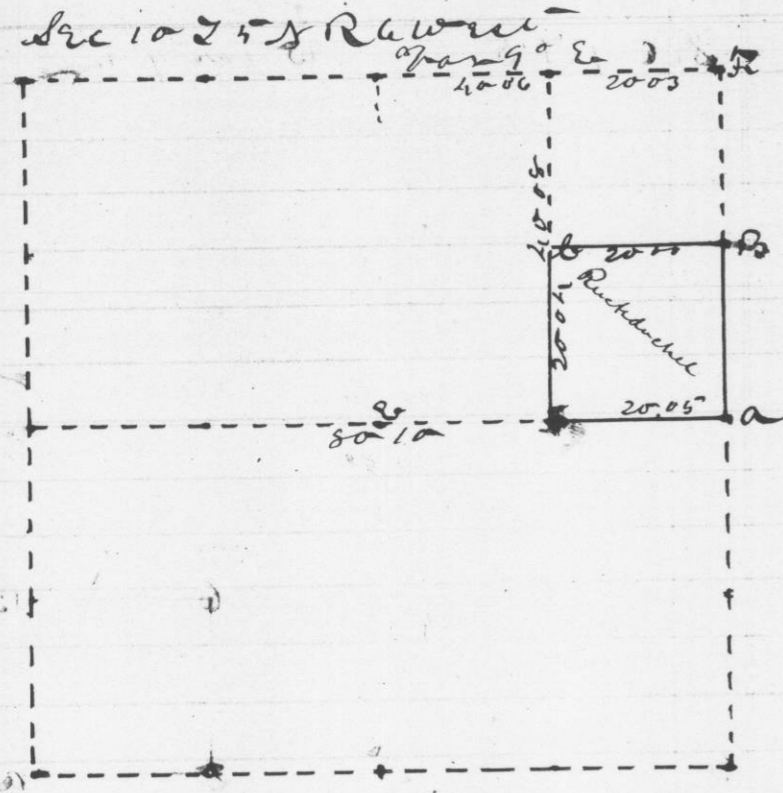


Survey made for Christian Ruckdachscl  
 May 25th 1871 of Sec 10 of Twp 5 N of R 6 W of S 10  
 of T 5 N of R 6 W as shown in the  
 following plat and field notes



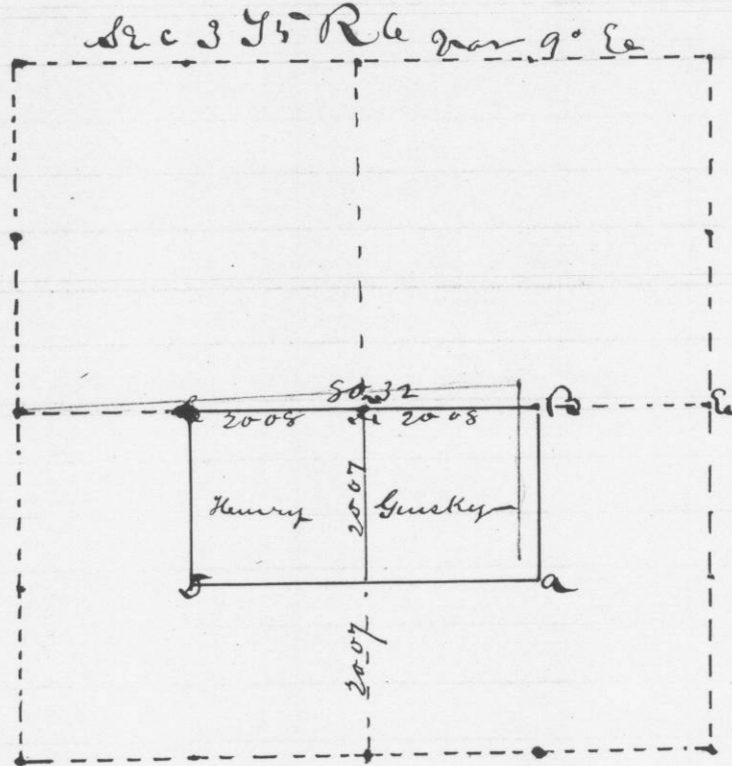
Reference

- at a original corner B.S. & S 85° E 38 links
- at b stone 6x6x14 midway between a & c
- at c stone
- at d stone 6x6x10 equal distance from a & c

attest

Geo Mc Fall  
 County Surveyor

Survey made for Henry Guskay May 26th  
 1871 of Sec 3 of Twp 5 N of R 6 W of S 10 of T 5 N  
 of R 6 W as shown in  
 the following map and field notes



Reference

- at a center of section established by former survey
- at b ditto stone equal distance from a & c to b
- at c ditto stone 6x10x18 equal distance from b to d

attest

Geo Mc Fall  
 County Surveyor