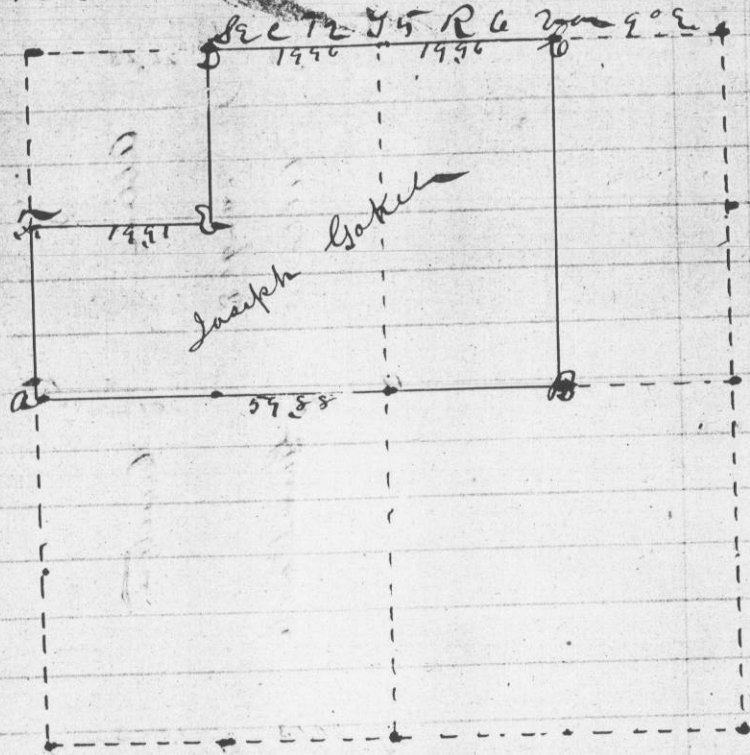


Survey made for Joseph Gokel of separate  
Sec 12 T5 N of R 6 West as shown in  
the following plat - said Survey begun  
Jan May 22d 1841

Sec 12 T5 R 6



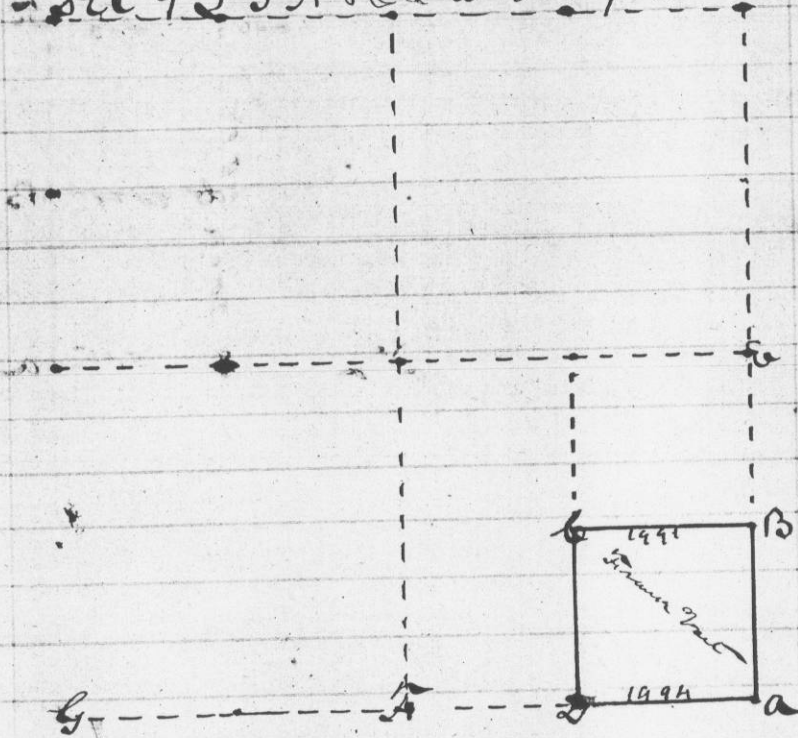
References

- at a original corner with stone in mound
- at B set stone 16x8x8 inches
- " c set stone 6x6x12 "
- " d set " 10x12x20 "
- " e set " 6x6x14 "
- " f set " 6x6x24 "

attest Geo Mc Fall  
County Surveyor

Survey made for Frank Post May 23d 1841  
of the Sec 9 T5 N R 6 W as shown  
in the following plat

Sec 9 T5 N R 6 W Var 9° E



References

- at a original corner found
- at B set stone 6x6x14 inches midway between a & b
- " c set stone 6x6x10 "
- " d set stone 6x6x18 " midway between a & f
- " e set stone in original mound
- " f attest

Geo Mc Fall  
County Surveyor