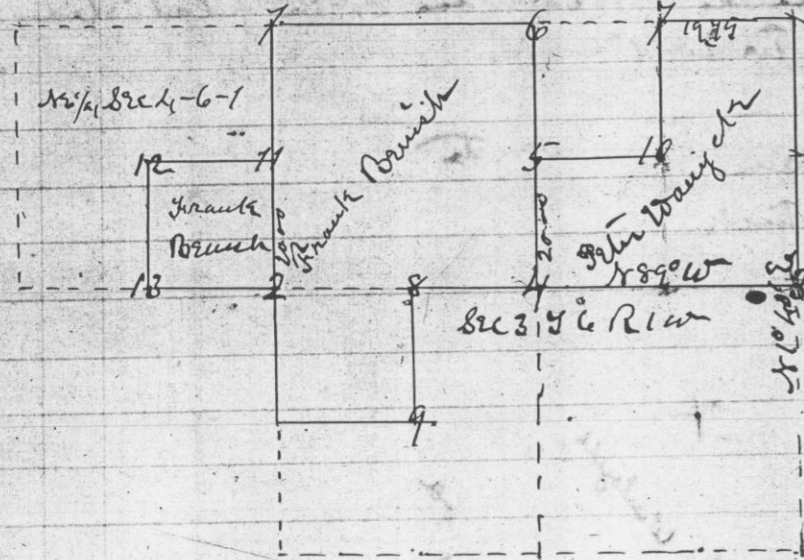


Survey made for Mangels and Frank Brusch  
 in Sec 3 and 4 in Tanna A. S. Range 1 west  
 is shown in the following plat, said subdivisions  
 made in accordance with statute in such  
 case made and provided - stones set at the corners  
 which are described below



Description of Rocks

at		inches in in
1	Sand	1 1/2 x 8 x 1 1/2
2	Lime	1 1/2 x 10 x 6
3	"	22 x 5 x 4 1/2
4	"	17 x 2 1/2 x 4 1/2
5	Sand	15 x 1 1/2 x 4 1/2
6	Lime	14 x 6 x 3
7	"	2 1/2 x 8 x 4 1/2
8	"	16 x 5 x 4 1/2
9	"	12 x 8 x 4 1/2
10	"	16 x 12 x 4 1/2
11	Sand	20 x 18 x 5 1/2
12	Lime	17 x 4 x 3
13	"	28 x 7 x 4 1/2 other

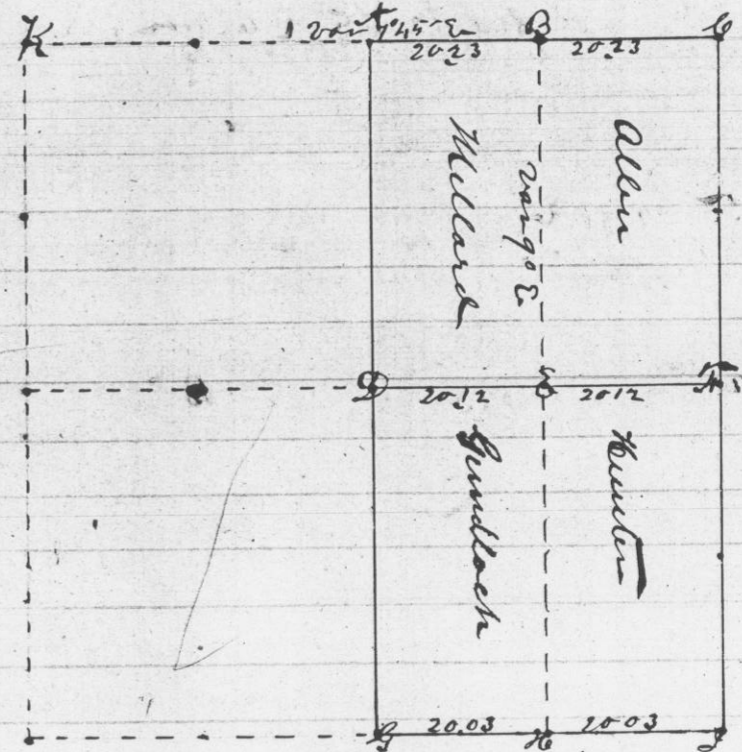
Geo McFall  
 County Surveyor

Per C. J. Overton  
 Asks

John Hunter and William Allen, Sr  
 E 1/4 of Sec 14 T 5 N R 1 West as  
 shown in the following plat

Done April 5th 1873

Sec 14 T 5 N R 1 West



Reference

at	A	1/4 Post not being found set stone equal from C to K
"	B	set stone at equal from A to C
"	C	original corner set stone in mound
"	D	established by survey Nov 1850
"	E	set stone in creek equal distance from D to K
"	F	original
"	G	original stake found set stone in mound
"	H	stone in mound established by previous survey

attest Geo McFall  
 County Surveyor  
 Per John Allen  
 Deputy