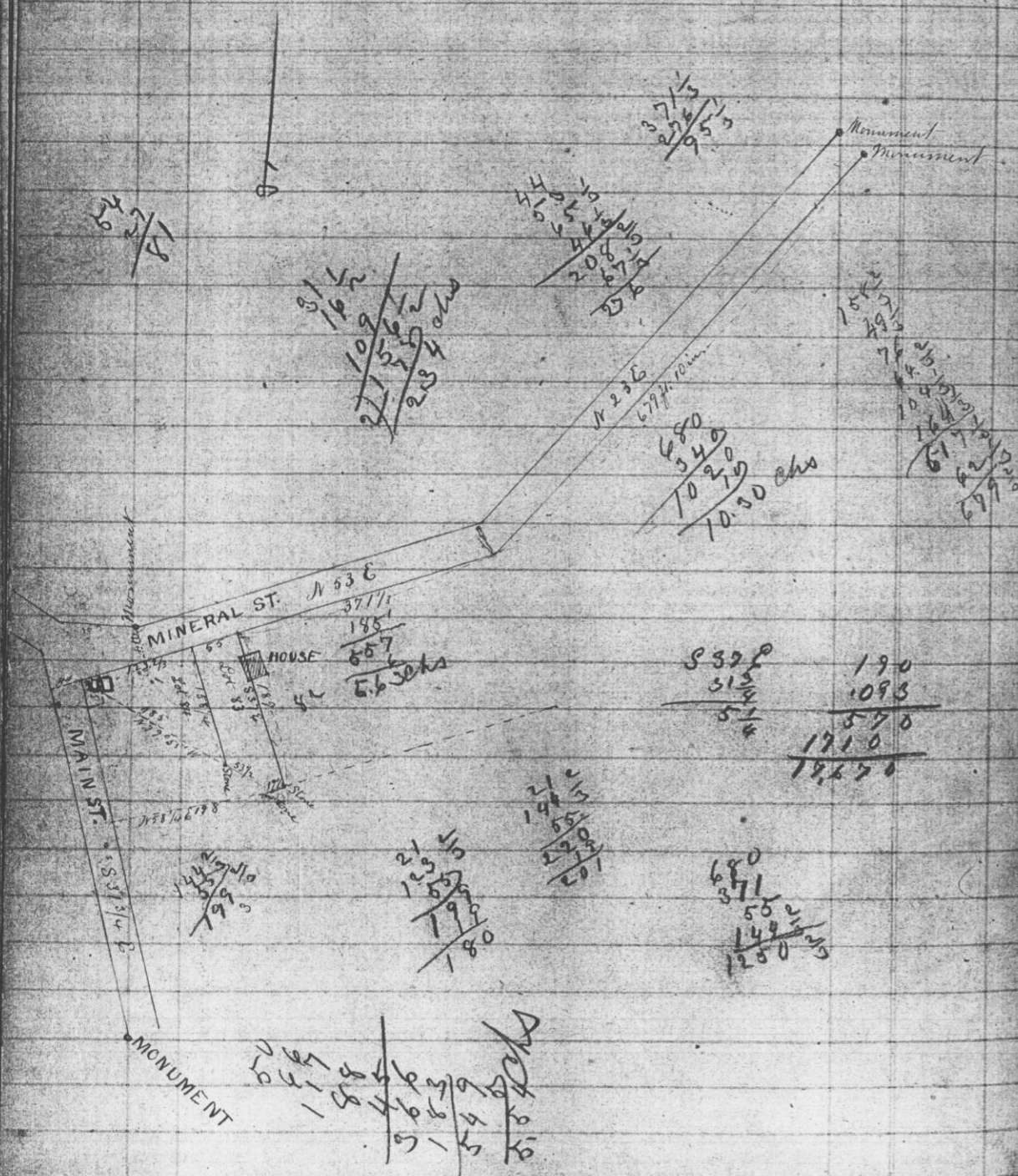


495
 176
 64
 62
 104
 1843
 180

203



State of Wisconsin ss
 County of Grant

204

I Joel Barber County Surveyor in and for Grant County aforesaid do hereby certify that I have surveyed and established Lot No. 83 in the village of Beetown as shown on the accompanying map. Said survey was established as follows: I commenced at a Monument on Main Street run up that street and found that the division between Lots No. 84 + 85 is the division between the respective houses on the lots - that is twenty one (21) feet from the intersection of Main + Mineral Streets is the aforesaid division between the houses; then I measured the total distance from the intersection of Main + Mineral Streets to a monument designated on the original map or plat at the second angle of Mineral Street. I found to be twelve hundred and fifty five and two thirds (1255 2/3) feet according to my chain. The original calls for 1250 feet 10 inches, which gives four and one half feet (4 1/2) to be distributed pro rata to the respective lots between Main Street and the Monument, allowing Lots No. 84 + 85 to be one hundred and forty four and two thirds (144 2/3) feet on Mineral Street according to the scale the original map was drafted by, which gives Lot 84 one hundred and twenty three and two thirds (123 2/3) feet and lot 85 is twenty one (21) feet, the sum of which is 144 2/3 feet - then measure fifty five (55) feet more the front of Lot 83 establishes the division line between lots No. 82 + 83 in such a manner that the house that is on lot No. 82 is at the NW corner seven (7) and at the SW corner three and one (3 1/2) feet onto Lot 83. The buildings that are on Lots Nos. 82, 83, 84 + 85 were erected previous to the original survey of the village of Beetown, and the owners of the respective houses accepted their deeds according to the original survey of the lots as designated on said plat. There is an error in the front of Lot 84 in the distance given or in the scale which it was platted by, that is the scale