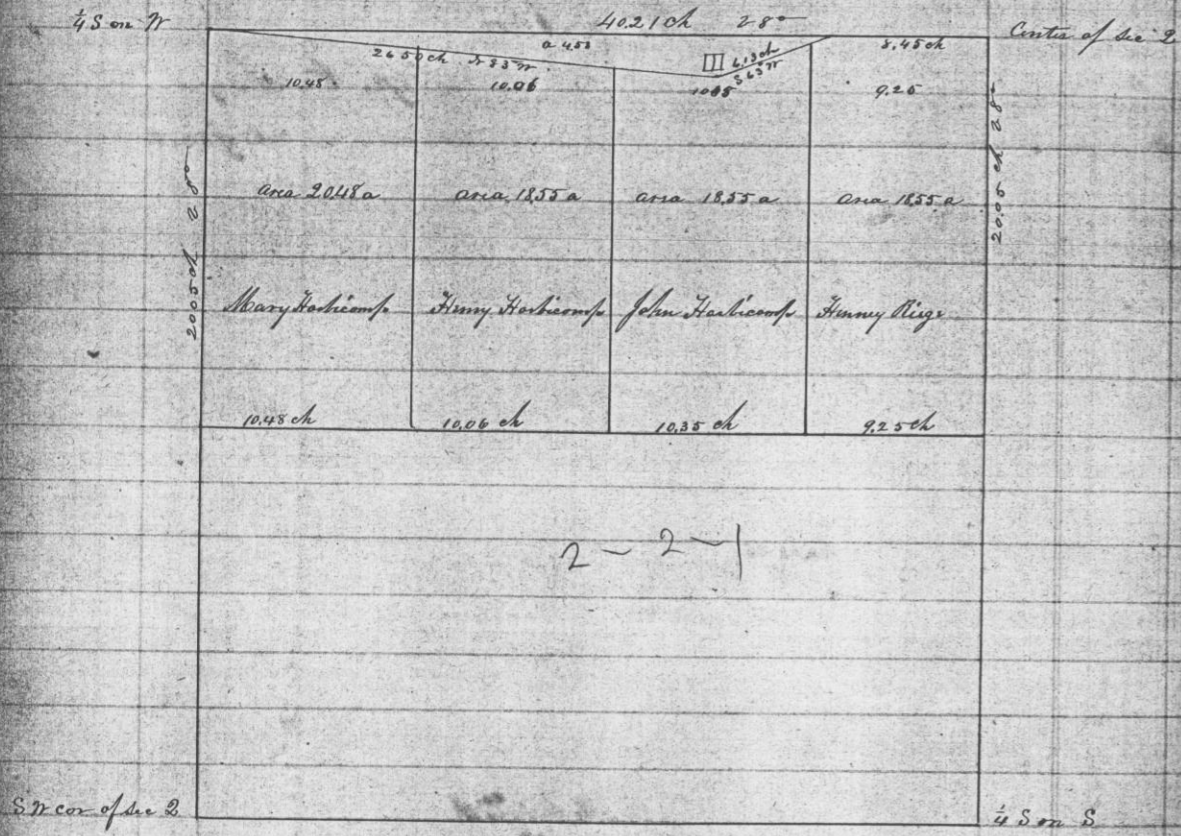


Beige and Harbocamp

Whereby certify that the following is a correct plat and copy of the field notes of a survey made by me this 11th day of December 1861 for Mary Harbocamp, Henry Harbocamp, John Harbocamp and Henry Beige of the N.E. of the 1/4 of Sec 2 in T. 2. N. of R. 1. W. of the 4th Principal Meridian



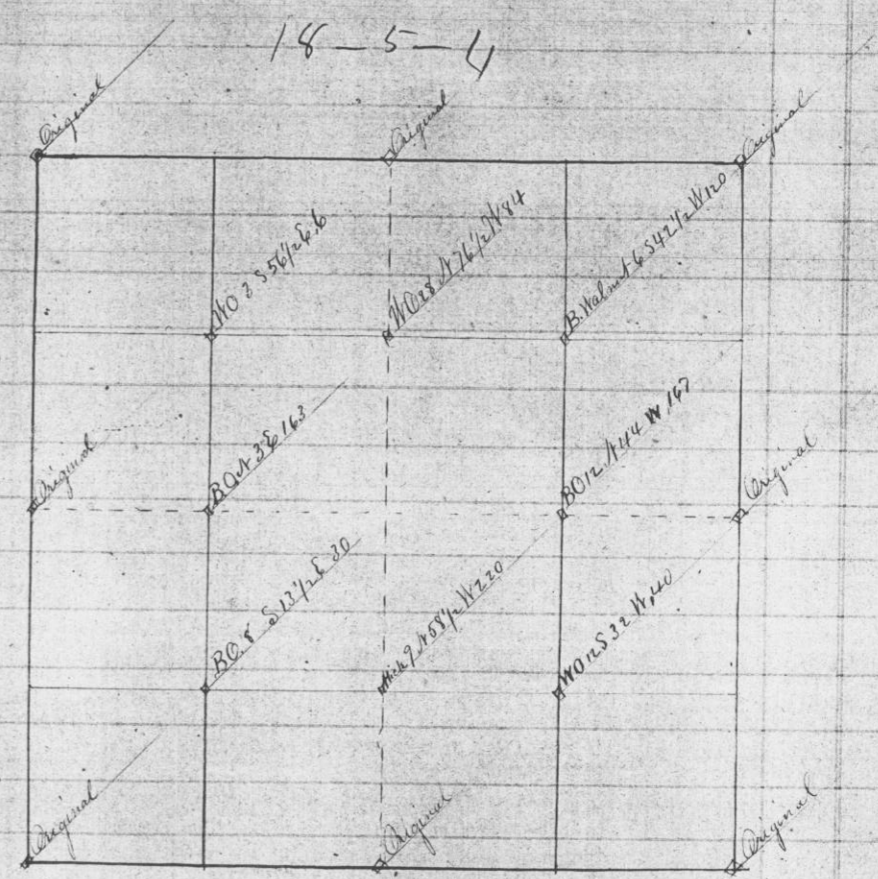
2-2-1

Attest

H. A. M. M. Fair
County Surveyor

Wm. H. Reed
Dist. Co. Surveyor

Survey made by Joel Barber on the 14th day of April 1867 for Patrick Linn in Section 18 Town 5 Range 4 West of the 4th Principal Meridian to establish the following corners



Surveyed by string lines in accordance with the last Attest

Joel Barber
County Surveyor