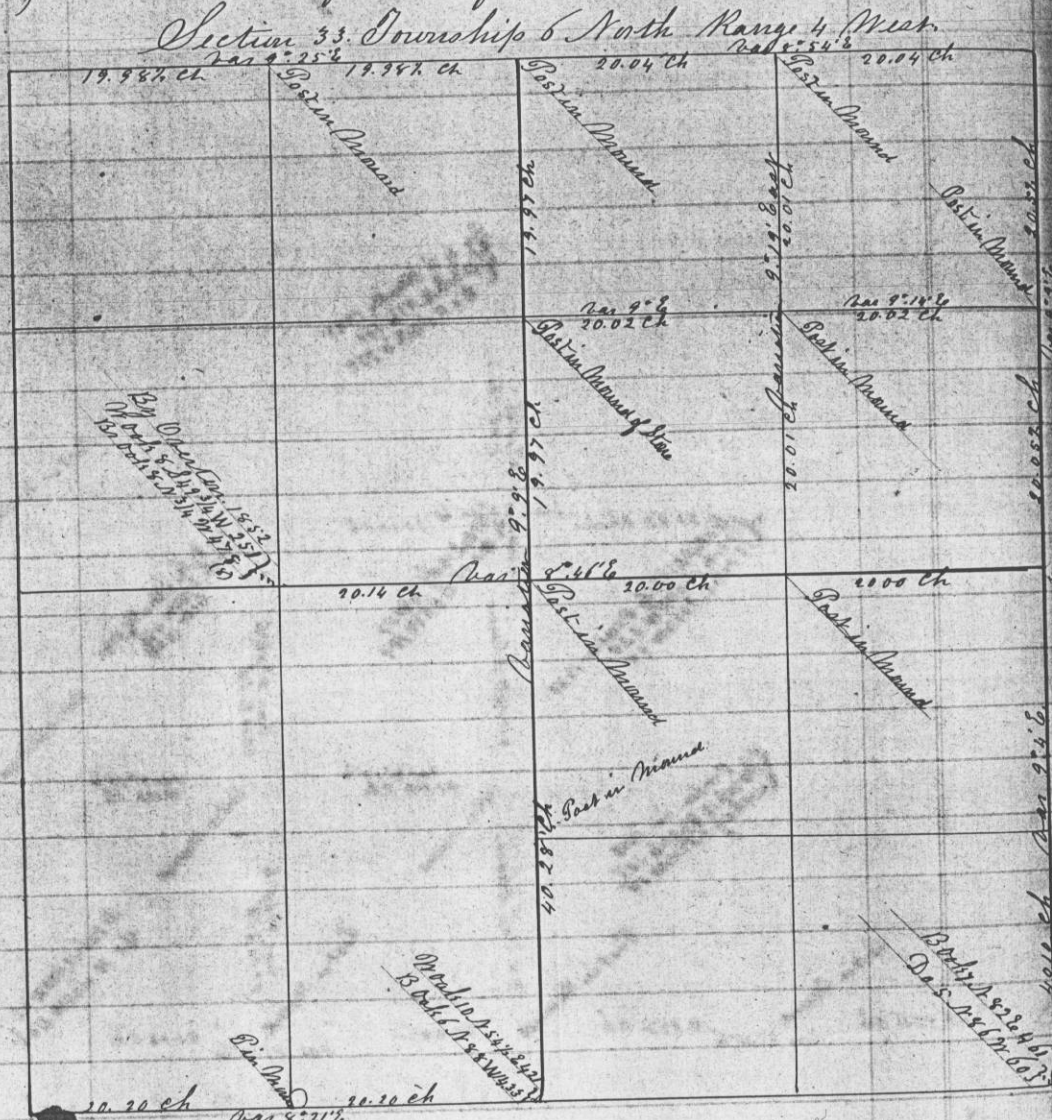


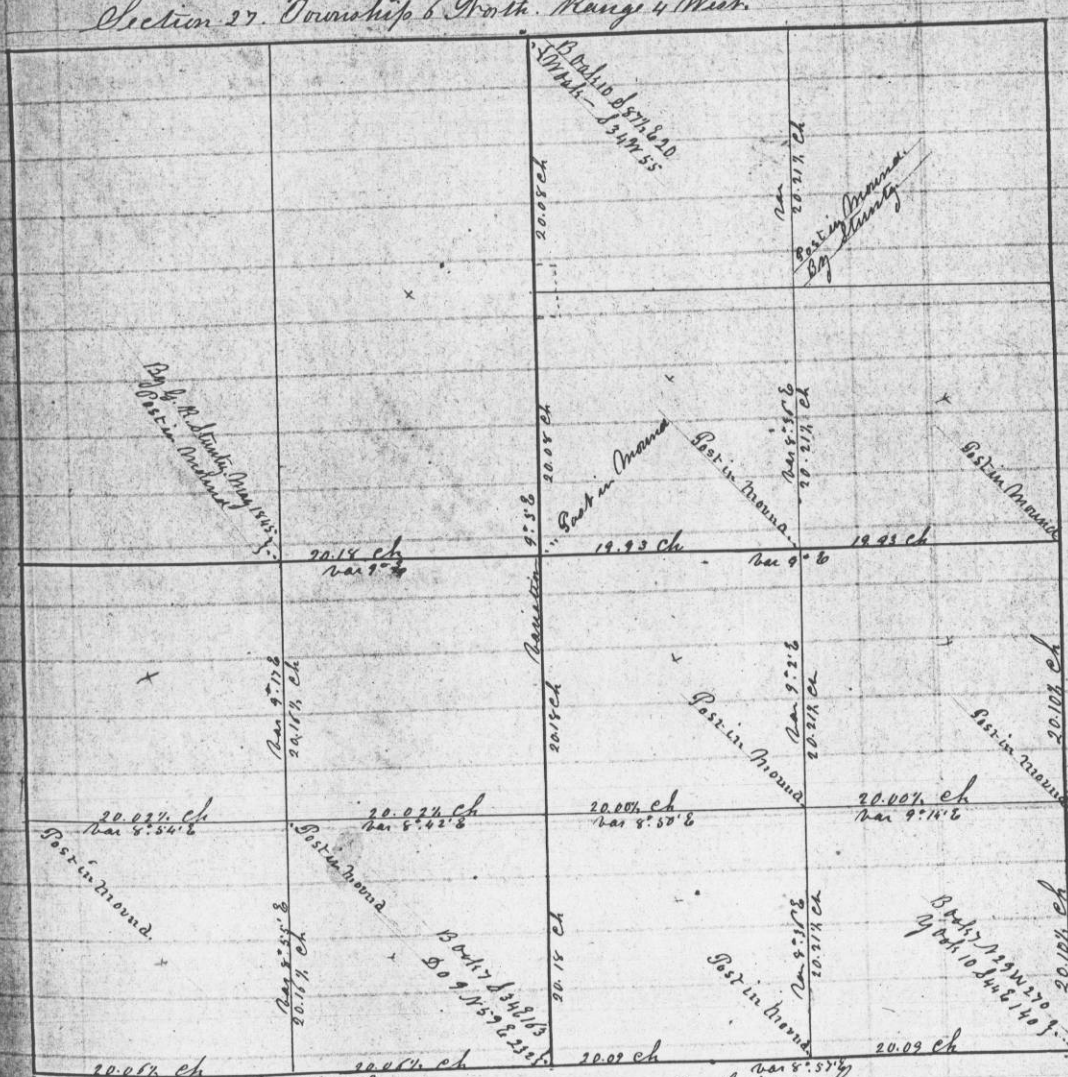
121 Survey made on Section 33 Township 6 North Range 4 West. William Henscher & William H. Merritt, Chairmen. May 30 & 31st & June 1st 1854 by Solomon Goodrich Deputy County Surveyor. For D. W. Wright the N. 1/4 of S. E. 1/4 and the E. 1/2 of S. E. 1/4 (also the S. E. 1/4 of S. E. 1/4 of S. 20. 24 & the S. W. 1/4 of S. W. 1/4 of S. 20. 27.) for A. D. Smith the N. 1/4 of the S. E. 1/4 & S. E. 1/4 of N. W. 1/4. for E. Snider the E. 1/2 of S. W. 1/4



Center-post set at intersection of true north & south line with true East & West line between 1/4 Section corner west of center & 1/4 Section corner on East side of Section 33.

A true record of notes of said Survey
 Recorded September 23rd 1854. Attest
 John G. Clark,
 County Surveyor

Survey made in Section 27 Township 6 North Range 4 West June 1st 1854 by Solomon Goodrich Deputy County Surveyor. David D. Snider & William Henscher, Chairmen for A. D. Cotton the S. E. 1/4 of S. W. 1/4 & S. W. 1/4 of S. E. 1/4 for Wm. H. Merritt the N. 1/4 of S. W. 1/4 for Peter Gulick the S. E. 1/4 of N. E. 1/4 & S. E. 1/4 of S. E. 1/4 for Wm. Whitesides the E. 1/2 of N. W. 1/4 (as N. 1/4 of S. 20. 14 of S. 20. 24); for John Leaser the S. W. 1/4 of N. E. 1/4 & S. W. 1/4 of S. E. 1/4; for Johnson Leaser of a lot containing one acre in the S. W. corner of the N. W. 1/4 of the S. E. 1/4 extending eight rods from East to West & Twenty rods from North to South. Also of a lot containing 1/2 acre for a year yield for the Easter Neighbourhood. Commencing two rods South of the N. W. corner of the S. W. 1/4 of S. E. 1/4 of said Section. Thence East 8 rods. Thence South 10 rods. Thence West 8 rods. Thence North 10 rods to place of beginning.



A true record of said Survey.
 Recorded Sep 23rd 1854. Attest
 John G. Clark,
 County Surveyor