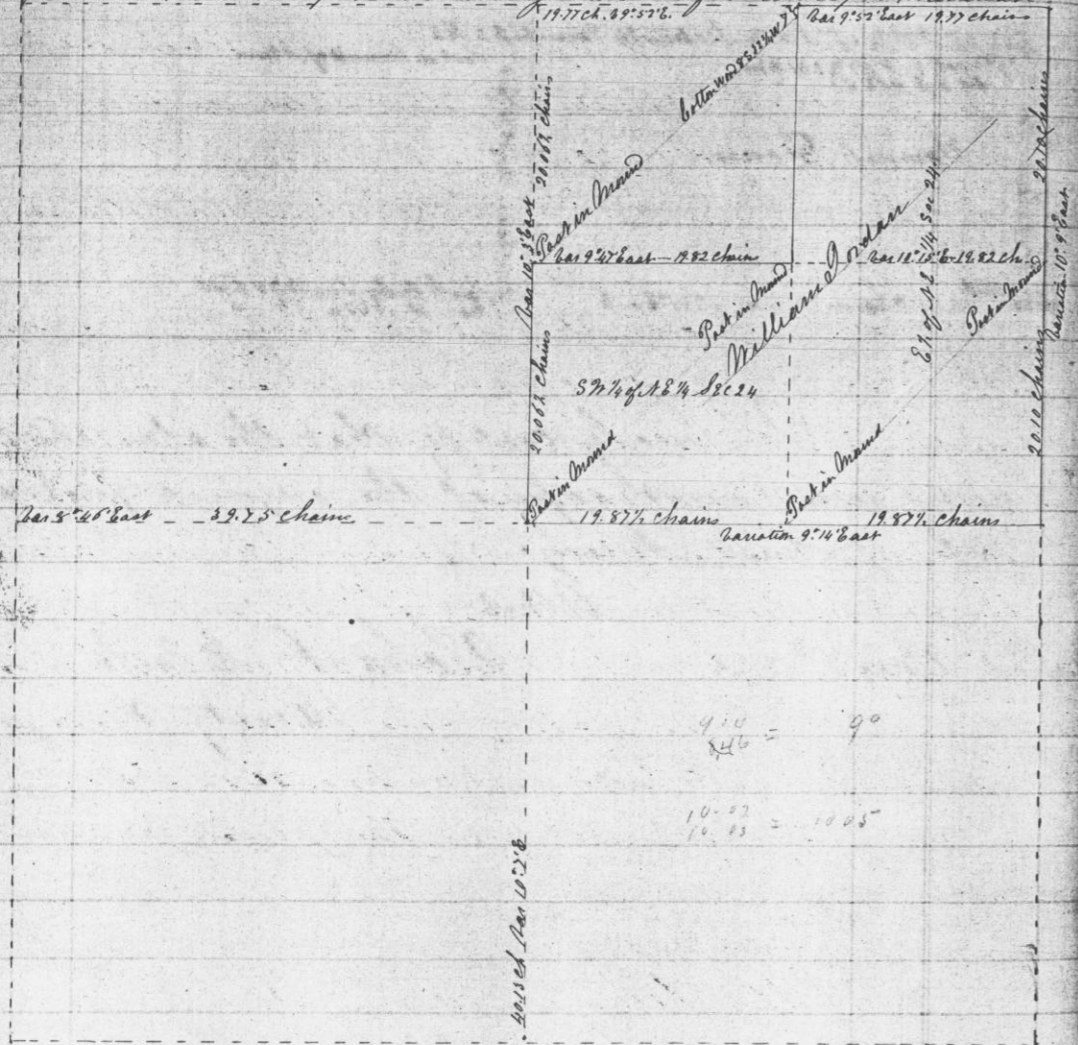


Survey made for William Jordan of the 3/4 of the N 1/2 and the 3/4 of the N 1/2 of Section 24, Town 4 North Range 6 West 4<sup>th</sup> P. M. May 6<sup>th</sup> 1854. By Solomon Goodrich Deputy County Surveyor. Reason Scott & Amos Ray Chainmen first duly sworn. Section 24 Township 4 North Range 6 West of 4<sup>th</sup> Principal Meridian



Which said Survey was made in accordance with the provisions of the Statute requiring the center parts of the sections & quarter sections to be set at equal distances from the North & South & also at equal distances from the East & West boundaries thereof.

A true Record of Notes of Said Survey.

Attest

Recorded June 7<sup>th</sup> 1854.

John G. Clark  
County Surveyor.

Survey made by Solomon Goodrich Deputy County Surveyor May 8<sup>th</sup> 1854 for Higgins, Kidd & Shott of line between Section 132 from corner of Sections 132 on Town line T 3 North R 6 West to quarter section corner bet said Sections 132. William Jordan & Riley Ayres Chainmen first duly sworn.

Commencing at corner of Sections 132<sup>th</sup> line between Townships 3 & 4 North Range 6 West ran thence South Variation 9° 30' East at 40.22 chains fell 24 links East of 1/4 Section corner between Sections 132 where Bears Red Elm & 259 W 103 links & the former a new bearing taken in lieu of the old ones destroyed. Thence curved North Per 8° 52' East 10.00 chains along East boundary of Kidds land & set post & mark bearing White oak 24 S 6 5/8 W 116 links White oak 22 N 5 8/9 W 144 links. Thence continued North same Variation on true line along East boundary of Higgins land 1000 chains & set post for North East corner of same. Bearing White Oak 12 N 5 3/4 W 33 links & White oak 24 S 70 1/4 E 79 links. Thence continued North same Variation along East boundary of Shotts land on true line 20.22 chains to corner of Sections 132 on Town line the place of beginning.

A true Record of notes of said Survey  
Attest

Recorded June 7<sup>th</sup> 1854.

John G. Clark  
County Surveyor.