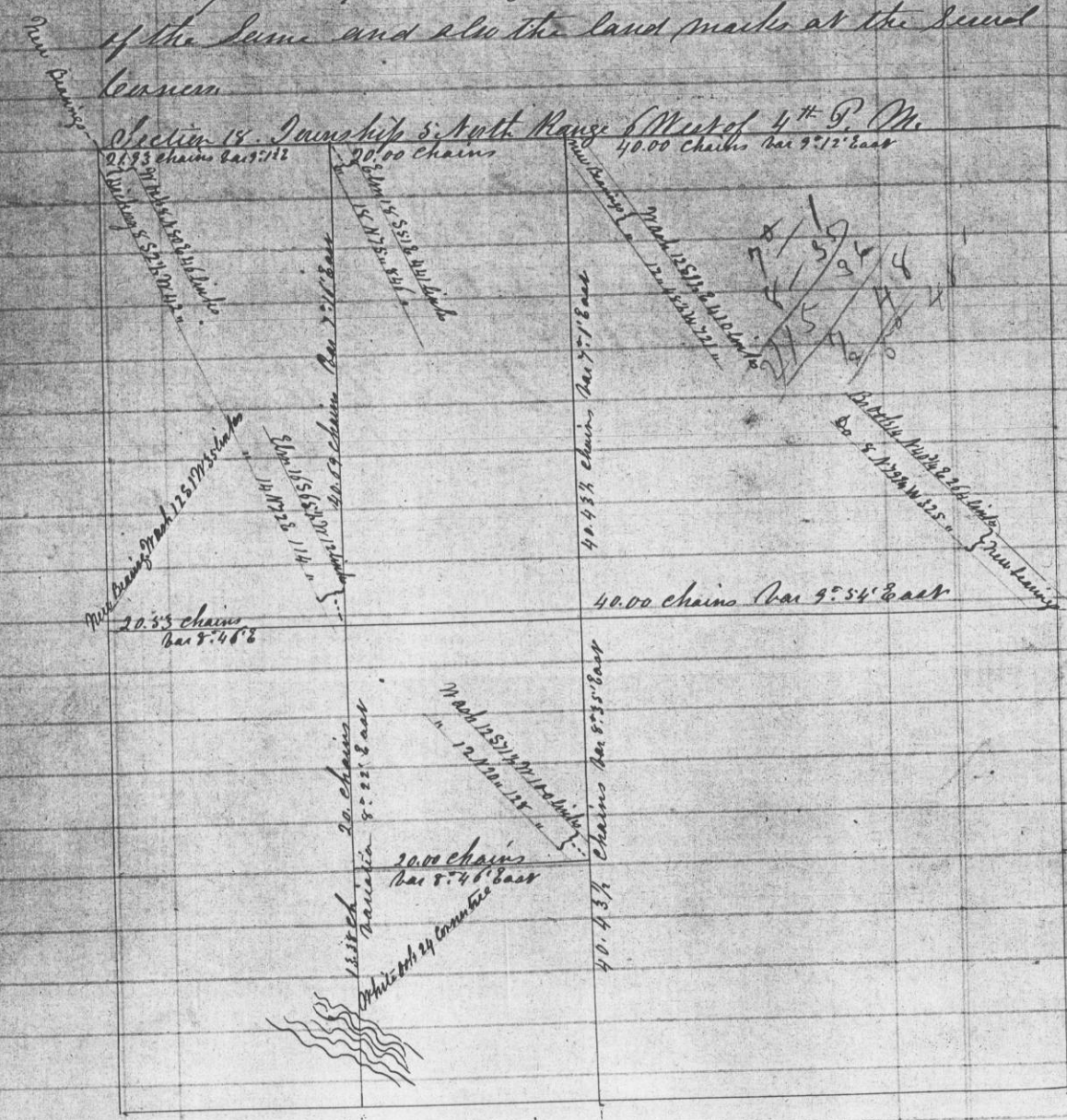


Record of Survey made for Barrett by Solomon Goodrich in Section 18 Township 5 North Range 6 West on the 4<sup>th</sup> day of April 1854. John Ross & William H. Hancy chainmen first duly sworn.

(NO. 45)

Of which said Survey the following is a true correct plot representing the length of lines the position of the same and also the land marks at the several corners.



I hereby certify that the above field notes & plot are true as copies from the original notes.

May 10<sup>th</sup> 1854

Attest

John G. Clark  
County Surveyor

B. Stone bearing on North side of Sec 17 at 140 Black oak 8 S 54 N 64 links

Section 33 Town 5 North Range 6 West by Solomon Goodrich Deputy County Surveyor Charles Milner & James Milner chainmen first duly sworn March 25<sup>th</sup> 1854.

(NO. 47)

Commencing at 1/4 Section past bet sections 33 & 34. Ran 9° 40' East ran thence West at 80.45 chains intersect West boundary of Section 14.5 links South of past thence corrected East 40.22 1/2 chains & set temporary 1/4 Section past in center of section.

Then commencing at quarter section past on South side of said Section 33 ran thence North Ran 8° 40' East at 80 chains intersect line between Sections 28 & 33. Then 1/2 links West of past. Thence corrected South 20 chains & set 1/8 past. Black oak 10 S 30 N 28  
Do 10 N 24 W 8 116

At 110.00 chains set quarter section stake for center of section. Thence corrected East 20 1/4 chains & set 1/8 section corner. Black oak 14 S 47 1/4 E 352  
Do 11 S 45 1/4 W 583

Then commencing at 1/4 Section past on line between Sections 28 & 33 ran thence East Ran 89° East at 39.92 chains fell South of Section corner 42 links Thence corrected West 19.96 chains & set 1/8 Section corner. Black oak 14 S 64 W 90  
Black oak 6 S 54 E 52

Then commencing at corner of Sections 27, 28, 33 & 34 ran South Ran 8° 40' East. At 40.09 chains fell 20 links East of quarter section corner. Thence corrected North 20.04 1/2 chains & set 1/8 section corner. White oak 5 S 14 W 53 links. White oak 8 S 50 1/4 E 21 links Thence ran West at 39.85 chains fell 16 links North of 1/8 section corner on West side of said quarter section corner. Thence corrected East 19.92 1/2 chains & set temporary 1/8 section past. Then commencing at 1/8 section corner on South side of said quarter section