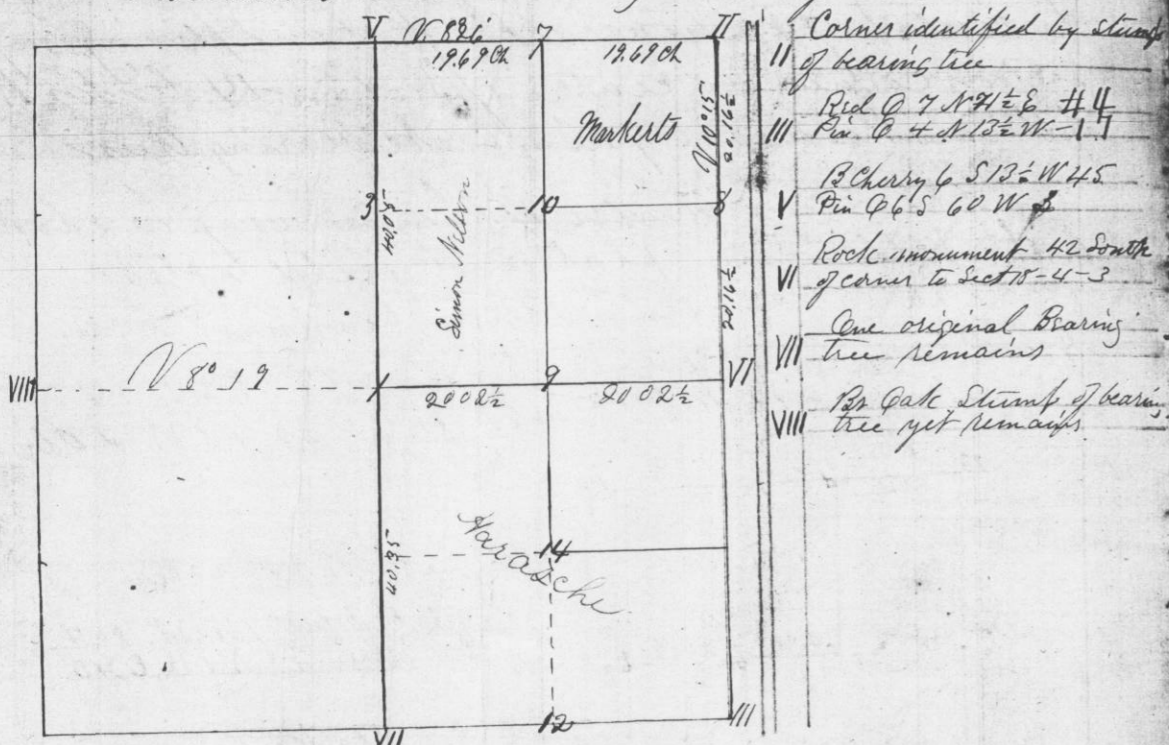


Survey of Section Thirteen Town four Range
 four west of 4th principal Meridian
 Made for M. Harasche Et. al. on the
 2nd & 3rd days of December 1875

The lengths and variations of lines and
 description of corners are given in the fol-
 lowing plat and field notes of Sec. 13. T4 R4 W
 Variation used in taking bearings 8° 30'



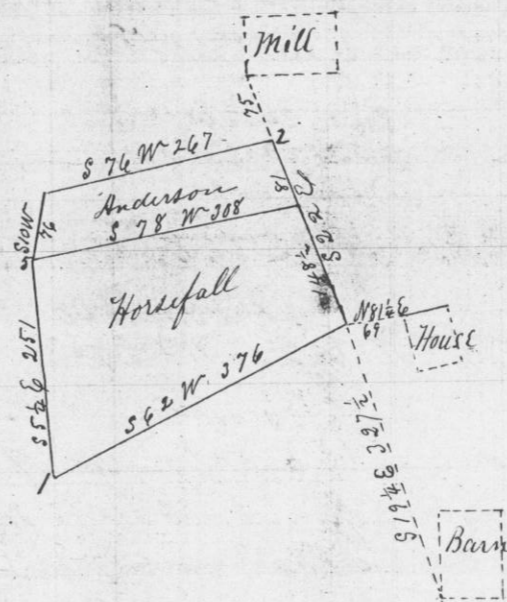
Cornet identified by stump
 of bearing tree
 Red Q 7 N 71 1/2 E 4 1/4
 Pin Q 4 N 13 1/2 W 1 1/4
 13 Cherry 6 S 13 1/2 W 4 1/2
 Pin Q 6 S 60 W 1/2
 Rock monument 42 South
 of corner to Sect 10-4-3
 One original bearing
 tree remains
 Red Oak stump of bearing
 tree yet remains

W Oak 15 N 48 W 20	W Q 4 N 56 E 7
1 Black Cherry 6 S 12 1/2 W 1 1/2	9 R Q 5 N 41 W 5
W Q 26 N 20 E 33	W Q 7 N 83 E 65
3 R Q 8 S 40 E 36	10 W Q 8 N 3 W 38
W Q 20 N 78 1/2 E 10 8 1/2	12 Corner previously set
7 W Q 20 S 50 W 57	14 Set stake without bearings
W Q 3 1/2 N 66 W 17	
8 W Q 24 S 8 2 1/2 E 77	

Sworn Chainmen
 John Harasche
 Simon Nelson

Attest
 Joel Barber
 County Surveyor

Survey of Lots in Village of Millville made on
 the 17th day of October 1879 for E. J. Kidd in
 the West half of N 6 1/4 of Sec. 2 T6 R5 using the
 Great Mill and other permanent objects to locate
 the survey

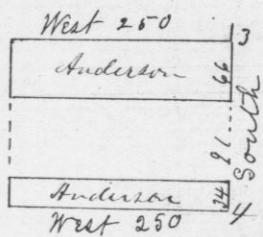


Corners
 1 W Q 8 S 78 W 18
 W Q 5 S 22 1/2 W 9
 2 S.W. Corner of Kidds mill
 bears N 22 W 75
 3 Iron Pump S 44 W 80
 S.W. Corner of Kidds Barn N 3 1/2 E 59 1/2
 4 S.E. corner of House N 7 1/2 W 100 1/2
 Hickory 10 N 51 1/2 W 145
 5 Dead Aspen to Cornet tree

PAGES
 560-561
 MISSING

Assumed Variation of all
 lines and bearings 8° E
 Recorded and certificate issued
 Oct 18th 1879

Joel Barber
 Co Surveyor



592
 21/16 54
 21/16 54
 21/16 54