

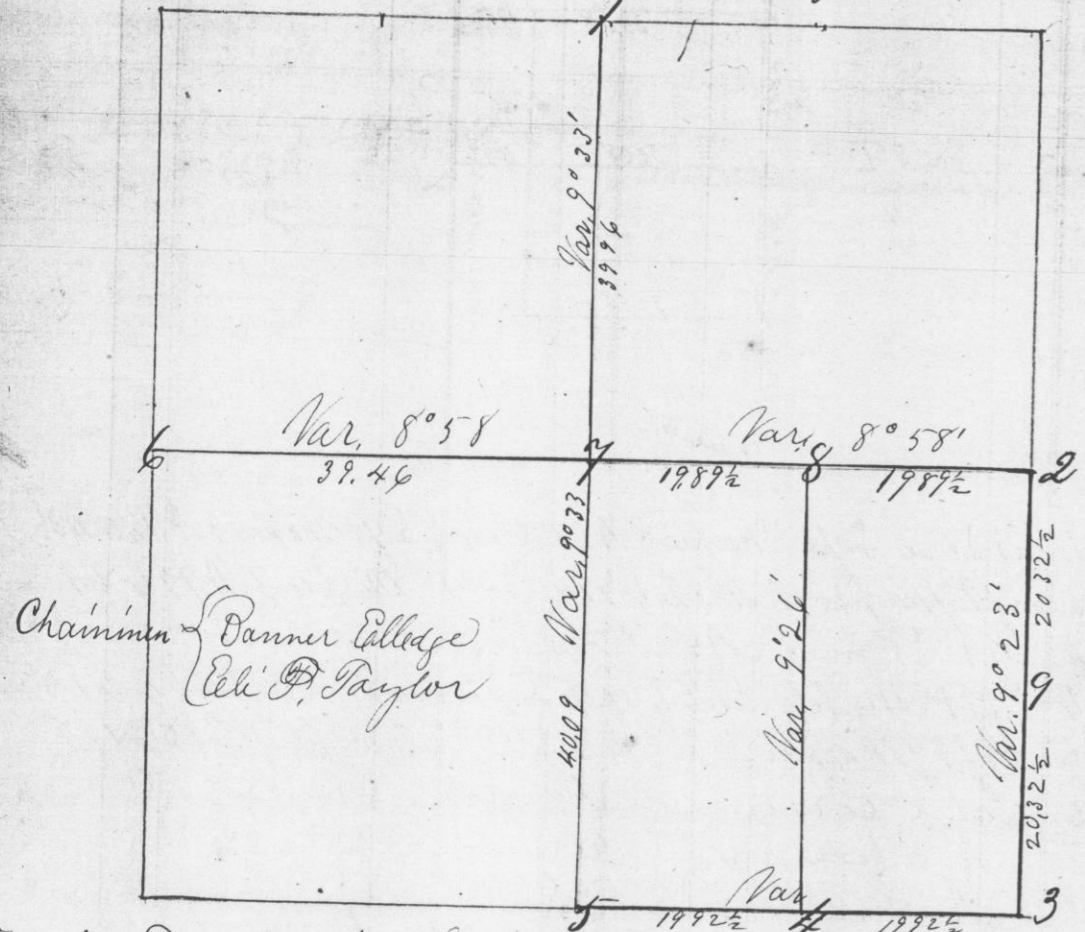
No. 929

T4 R5

Sec. 24-4-5

Survey of Sec. 24 T4 R5 made on the 21st day of October. The following plat exhibits the length and variation of the lines run. The corners set or identified are described in the field notes as numbered on the plat

Variation used in taking bearings 8 1/2° E



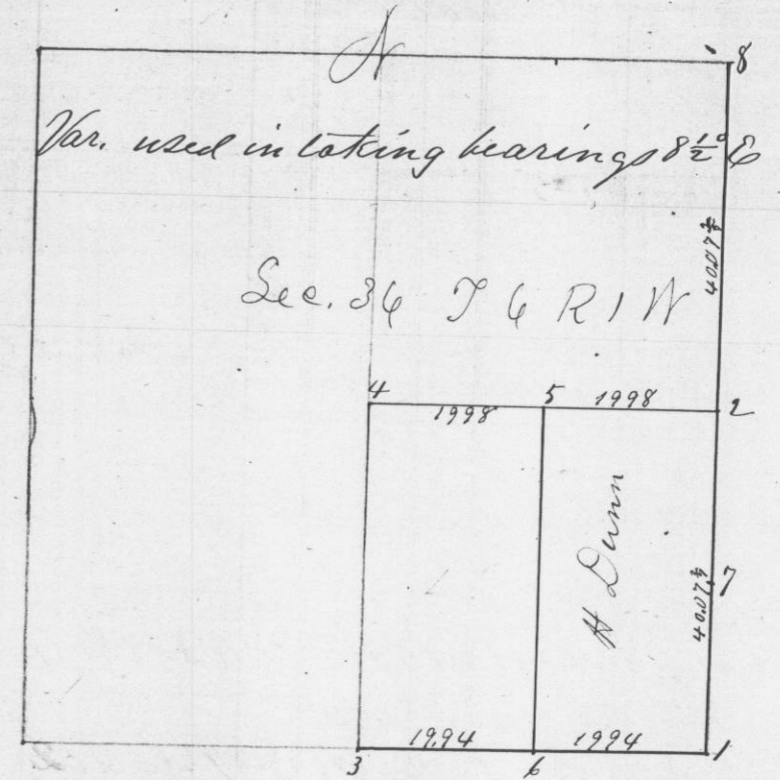
- 1 - Found ancient stake and set stone
- 2 Pin Oak S N 15 E 18 1/2 - Pin Oak S 8 1/2 W 21 1/2 - Pin Oak S 8 1/2 W 20 1/2
- 3 Original section corner
- 4 Set stake to bearings
- 5 Ancient stone corner
- 6 Original corner
- 7 Set stone
- 8 Set stone
- 9 - W 30 North 45
Pin Oak N 48 E 13

Recorded and certificate issued to S. Wick and Philander Stephens Nov. 2nd 1875
Joel Barber

No. 930

T6 R1 W Sec. 36

Survey made for Harvey Dunn on the 10th day of November 1875 of the East 1/2 of the SE 1/4 of Sec. 36 T6 R1 West Wm. A. Fry & Arin M. Smith Chainmen, Lines and corners indicated in the following plat and field notes.



- 3 1 Original Town corner - Large mound
- 2 Set stake by tracing Meridian line to 1/4 post E of Sec 24.
- 7 3 Found rock set for corner.
- 9 4 Rock set by Mc Nair
- 17 5 Set rock Equidistant between 2 + 4
- 20 6 Set Rock " " 1 + 3
- 19 7 White Pine S 19 1/4 W 208 W. Pine 7 S 78 1/2 W 85 1/2 links
- 2 8 Set Rock corner for A. J. Hartsook Point marked S 36 W 42
" " S 49 1/2 E 59
Corrected into same line as No. 2 - true 4th Meridian

Recorded and certificate issued Nov 30th 1875
Joel Barber