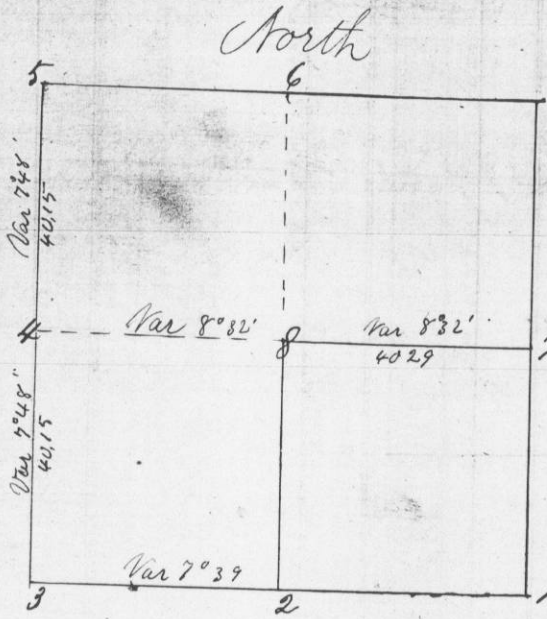


Survey of Sec 8 T 3 R 1 made for Laflin & Rand Powder Co on the 17th day of August 1875
 Divided the section by straight lines from quarter post to quarter post and placed corner No. 8 at their intersection

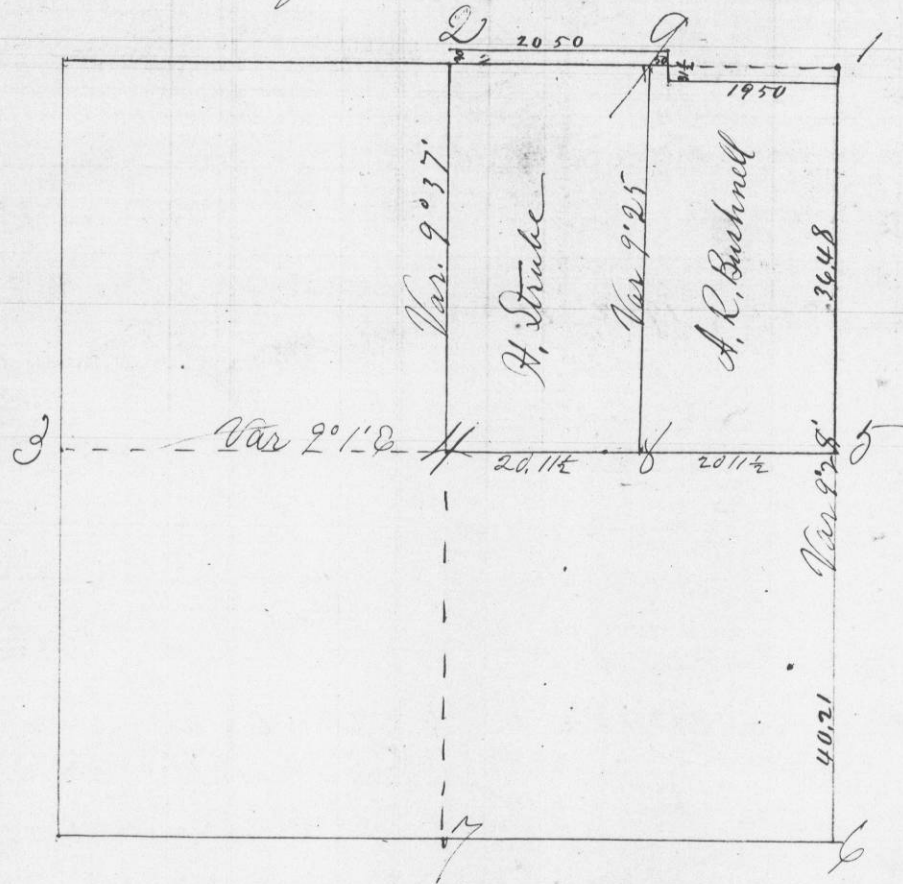


- Cor. No. 1 Original
 7 Identified by one marked stump of bearing tree - took new bearings
 Elm 12 S 43 E 67
 Sugar 16 W 116
 3 Old corner - new bearings
 Lynn 14 N 46 1/4 E 79
 Sugar 14 N 73 3/4 W 105
 4 Blk Oak N 69 1/2 E 160
 Blk Cherry 7 N 74 1/2 W 136
 5 Old corner
 6 Rock corner
 7 Old corner
 8 Elm 13 S 86 1/2 E 68 1/2
 Blk. 15 N 53 W 3 1/2

Certificate issued August 19th 1875

Joel Barber
 County Surveyor

Survey made for A R Bushnell and Henry Strube on the 9th day of Sept. 1875
 of Section 1 Township 4 North of ~~4th R. 7th W.~~
 Range 6 West of 4th P.M.



- 2 1 Stone in original mound
 5 2 Stone set by James Wilson
 3 Original
 4 4 Soft Maple 8 N 2 3/4 W 154 Elm 3 N 89 1/2 E 104 1/2
 5 Stake This maple is the most easterly of a cluster
 6 New bearing Blk Walnut 6 S 44 1/2 E 22 W 610 S 41 1/2 - 89
 7 7 New bearings W 68 N 71 1/4 W 49 1/2 W 622 S 87 1/4 W 133
 8 Stake
 15 9 Stone accurately set and found correct
 Sworn Chainmen V. Schuller + H. Fralick

Attest Joel Barber