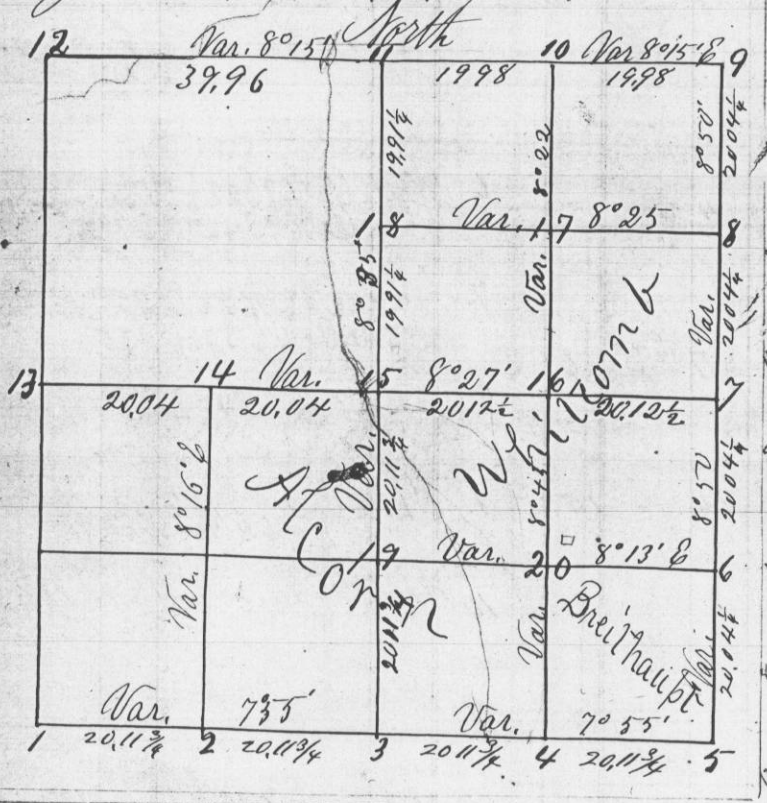


Survey made for William Mcorn and others
June 21st 1875



- 7 Br Q 12 N 32 E 11
- 8 Br Q 3 N 50 W 54
- 8 Black Q 6 S 22 W 49
- Br Q 4 N 3 W 17
- 9 Br Q 10 S 84 W 238
- Set but
- 10 Not established
- 11 Br Q 11 S 75 W 47
- Br Q 12 N 78 E 48
- 12 Br Q 20 N 10 W 290
- Br Q 14 N 59 W 338
- 13 W Q 14 N 37 W 34 1/2
- 14 Br Q 2 S 15 E 63
- Br Q 12 S 79 1/2 W 154 1/2
- Var. 8° 27' E
- 15 Br Q 14 S 71 E 63 1/2
- Br Q 4 N 43 1/2 E 42
- 16 Br Q 5 S 4 W 48
- Br Q 2 N 36 W 31
- 17 Br Q 4 S 30 E 9 1/2
- W Q 2 1/2 N 60 1/2 W 41
- 18 Hickory 7 S 77 1/2 E 44 1/2
- Var. 8° 50' E
- 19 Hickory 7 S
- Br Q 2 N 34 1/2 W 91
- Br Q 6 N 67 1/2 E 150 1/2
- 20 Br Q 6 S 86 1/2 E 90
- Br Q 3 S 15 E 20

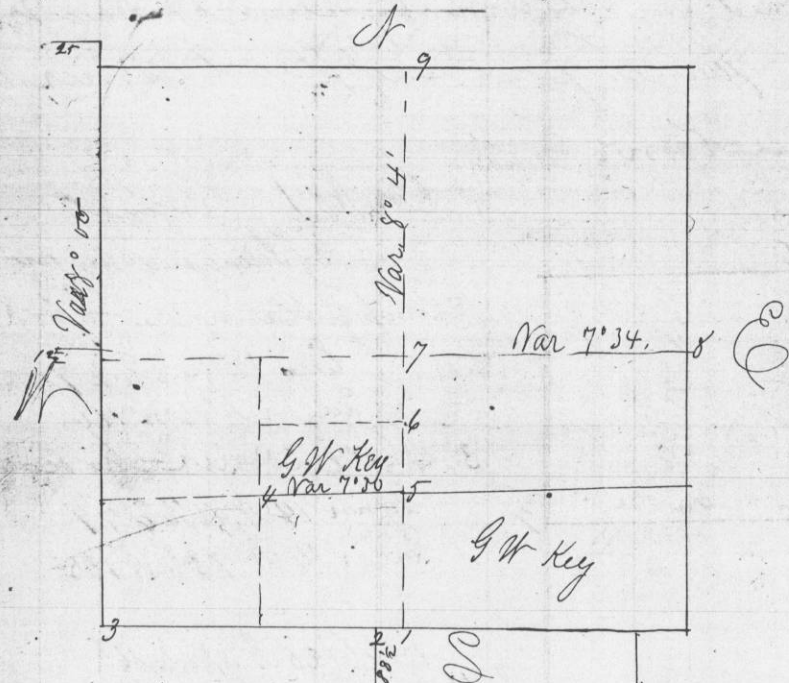
Notes of Corners

- 1 White Q 12 S 60 W 68
- B Q 14 N 77 E 78
- 2 Hickory 3 N 64 W 63
- W Q 4 N 88 1/2 E 39
- 3 Hickory 4 N 67 1/2 W 124
- W Q 4 N 77 1/2 E 49
- 4 Br Q 5 N 25 E 4
- W Q 7 S 45 W 18
- 5 Br Q 10 N 51 E 161
- W Q 12 S 72 1/2 W 166
- 6 W Q 4 S 42 E 29
- W Q 4 N 2 E 42

- 175
- 54
- 23
- 7
- 20
- 3
- 19

I hereby certify that I have surveyed the above section and correctly established the corners described also that the lengths and variations of the lines are expressed correctly upon the plat. Witness my hand and seal this 21st day of June 1875
Wm Mcorn Jr. and Geo McClond Chainmen,
Joel Barber County Surveyor

Survey made for Geo. W. Key made on the 11th day of August 1875 as shown in the following plat and field notes



- Notes of Corners
- 1 W Q 5 S 45 W 18
- Hickory 4 N 34 E 48 Var 8° 30'
- 2 W Q 7 S 70 1/2 W 33
- Br Q 1 W 72 1/2 E 46 Var 8° 30'
- 3 Br Q 4 N 57 W 25
- Br Q 4 S 49 1/2 W 23 Var 8° 30'
- Br Q 1 1/4 S 79 E 8
- 4 W Q 24 N 34 E 91
- W Q 20 N 5 1/2 W 78 1/2 Var 8° 30'
- 5 Black Q 1 N 73 40 W 17
- " " 44 46 1/4 W 17 Var 8° 30'
- 6 W Q 30 S 8 1/2 W 107
- Cottonwood 12 N 38 W 35 Var 8°
- 7 Br Q 7 S 11 1/2 W 15 1/2
- W Q 8 N 57 1/2 W 127 Var 8°
- 8 W Q 7 South 4 1/2
- Br Q 8 N 20 W 45 Var 8°
- 9 Sugar 15 N 31 1/4 W 85 1/2
- " 16 N 8 1/2 W 136 Var 8° 30'

Chainmen sworn in,
Horace Keef
Harrison Blunt.

This is the substance of the printed form filled out and issued to Geo. W. Key this 18th day of Aug, 1875 by
Joel Barber
County Surveyor