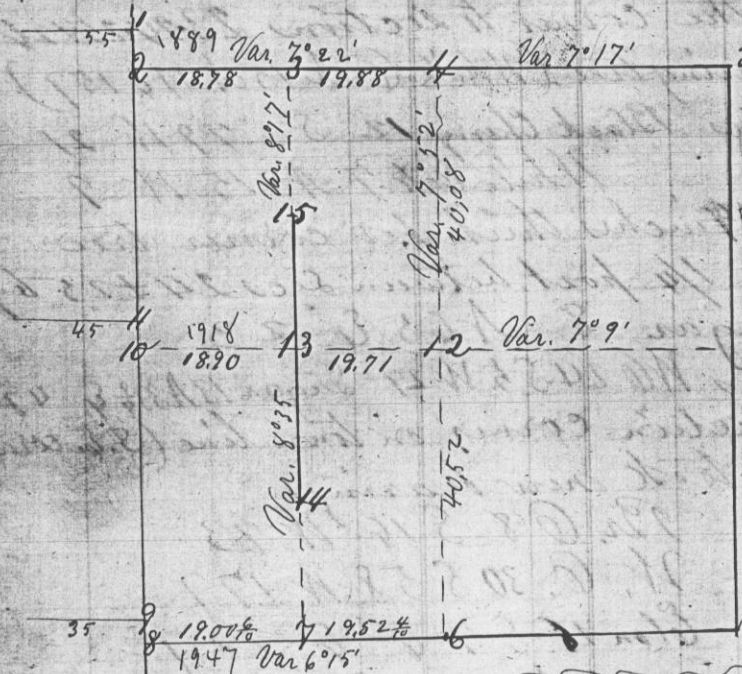


No 924
T 5 R 4 Sec. 18

Survey of section 18 Town 5 R 4 made on the 30th day of July 1875 for Barney Enyess.



- 10 Br Q 4 S 40 1/2 W 18 1/2
Pin O 8 S 81 6 24
- 11 Br Q 6 N 51 1/2 E 5
Blk Q 8 S 23 3/4 W 50
- 12 W O 24 N 28 1/2 E 65 4
Blk Q 12 N 70 1/2 W 118 7
- 13 Blk Q 12 N 3 1/2 E 129 1/2
No other near
- 14 Blk Q 13 S 13 1/2 E 34 1/2
W O 13 N 40 W 98 1/2
- 15 W O 5 S 52 1/2 E 34
Pin Oak 6 S 47 1/2 W 25

Nos 14 + 15 are only set with reference to the N + S line and have not been determined by straight lines running east + west.

Variation of Bearings 8 1/2° E.

Chaimmen duly sworn
John Tierney
Daniel Bradley

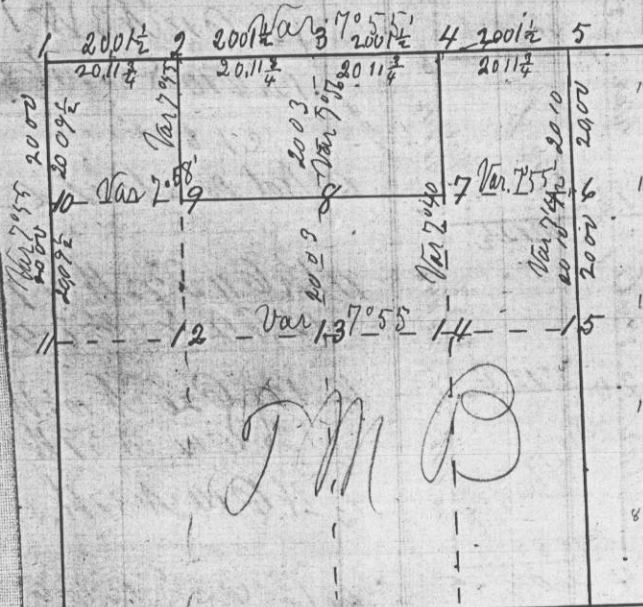
The reported distances are given in red ink. Corners 3, 13, + 7 are set at proportional distances, Printed certificate filled and given of which this the correct digest.

Joel Barber

- 1 Original
- 2 Original
- 3 W O 6 S 3 W 29 1/2
W O 4 S 7 8 W 38
- 4 W O 7 N 18 1/2 E 7
W O 4 N 77 1/2 E 57
Hickory 4 S 86 3/4 W 111
- 5 W O 18 S 67 3/4 E 146 1/2
- 6 Stone Corner-known to be correct
- 7 Hickory 12 N 86 E 74
Black Oak 13 N 40 W 13
- 8 Br Q 4 S 40 E 95
Blk Q 2 S 43 1/2 W 27
- 9 Br Q 1 N 33 E 44
Br Q 1 1/2 S 70 W 12

T 5 R 3 Sec. 34

Survey of the NE 1/4 of NW 1/4 and NW 1/4 of NE 1/4 of Section 34 Town 5 Range 3 West of 4th Principal Meridian - Made on the 25th + 26 days of June 1875



J M B

- 6 White Oak 8 S 22 1/2 W 51 1/2 (Var. 7° 30')
- White Oak 9 S 42 10' E 190
- 7 Sugar 18 N 3 1/2 E 95 1/2 (Var. 7° 40')
- White Oak 6 S 76 1/4 W 55
- 8 Br Oak 7 S 45 3/4 W 38
- White Oak 3 N 53 W 4
- 9 White Oak 4 S 46 1/2 E 11 1/2
- " " 6 S 76 1/2 W 53
- 10 White Oak 12 N 81 1/2 W 118 (Var. 7° 40')
- " " 5 N 35 E 101 1/2
- 11 White Oak 8 N 68 E 22
- " " 4 S 66 1/2 W 55
- 12 White Oak 10 S 19 W 100
- " " 12 S 65 E 126
Set by Truman
- 13 White Oak 14 N 54 E 63
- White Oak 10 S 71 1/2 W 32
Set by Truman
- 14 Set stake to replace old one
- 15 White Oak 24 S 2 1/2 E 76
- White Oak 24 S 69 1/4 E 85

Variation of Bearings 8° 30' E
except as noted

Chaimmen - duly sworn
Oliver Eastman
Augustin Munson

Witness my hand this 26th day of June 1875

Joel Barber
County Surveyor

- White Oak 12 S 60 W 68
- 1 Black Oak 14 N 77 E 78
- 2 Hickory 3 1/2 N 6 3/4 W 63
- White Oak 4 N 88 1/2 E 139
- 3 Hickory 5 N 67 3/4 W 124
- White Oak N 7 1/2 E 49
- 4 Br Oak 5 N 25 E 48
- White Oak 7 S 45 W 78
- White Oak 2 N 47 1/2 W 73
- 5 " " 3 S 75 E 47