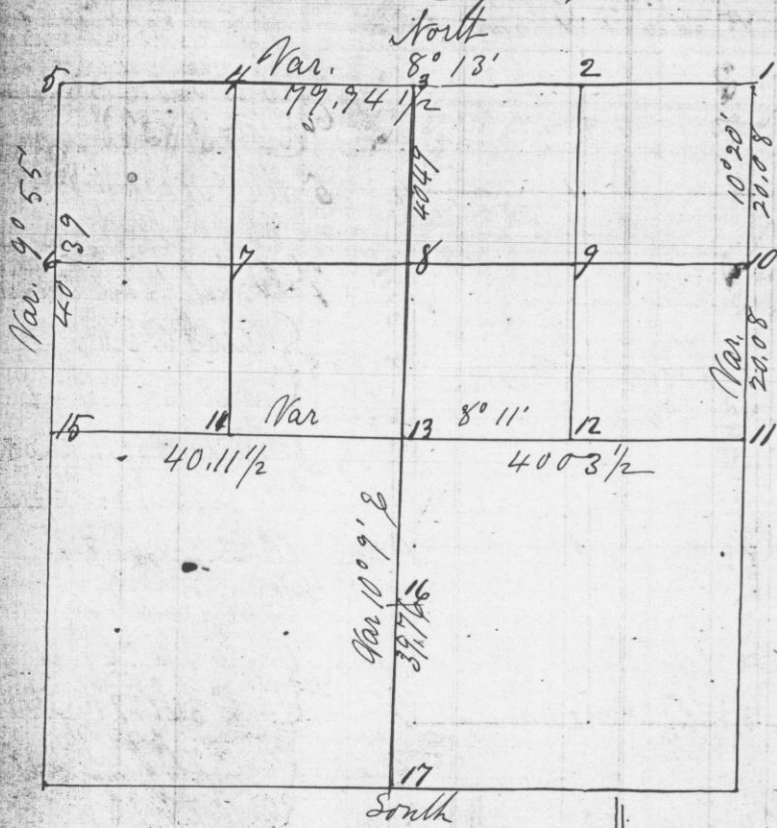


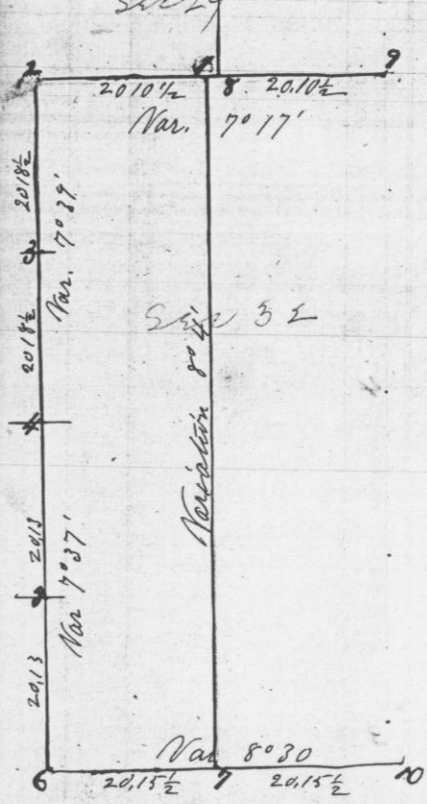
Survey of Section 35 T4 R4
 Made for Peter Casper and others on
 the 29th day of May 1875. The lengths and
 variations of the lines are shown in the following
 plat and the corners established are described
 in the following notes as numbered at the
 corners on the plat



- No 1 Butternut 14 S 57 3/4 E 63
 This is the corner to sections 25-26
 35-36 and was found by meas-
 uring the whole section lines
 East and west of it and to the
 1/4 section corners next north
 and south of it Planted a
 rock 30 x 24 x 7 inches
 - No 2 W 7 S 7 3/4 E 20 1/2
 W 13 N 46 1/2 W 43
- Joel Barber
 County Surveyor

- 3 Equidistant between 1 & 5
 Hickory 7 S 68 E 19
 W 8 S 7 W 10
 Oak 3 N 10 1/2 W 1/2
- 4 Box Elder 10 S 54 1/2 W 17 3/4
 Willow 13 N 80 1/2 W 13 1/2
- 5 Original section corner
- 6 W 12 S 75 1/2 W 17
 Br 14 S 53 E 32
- 7 Elm 16 N 5 W 288 1/2
 Sugar 5 N 31 1/2 W 21 9
- 8 Pin Oak 14 South 5
 Black Oak 22 N 86 1/2 E 33
- 9 R 0 5 N 55 E 107
 Blk Ash 6 N 19 1/2 W 55 1/2
- 10 Butternut 8 N 80 E 51
 Butternut 4 West 21 1/2
- 11 Original section corner
 between sections 35 & 36
- 12 W 8 N 51 1/2 E 50
 Hickory 7 S 82 E 69
- 13 R 0 18 N 34 E 19
 Hickory 7 S 66 E 29
- 14 W 12 N 30 1/2 E 10 1/2
 Lynn 12 S 72 E 39 1/2
- 15 Original 1/4 sec corner
- 16 Hickory 6 N 66 1/2 E 9
 Hickory 3 N 36 1/4 E 52
- 17 1/4 corner on town line
 Elm 3 N 29 E 118
 W 30 N 28 E 120
 Br 6 S 30 E 10 1/2
 Red 20 N 58 W 33

Survey of the West 1/2 of the NW 1/4 and the
 West 1/2 of the SW 1/4 of Section 32 Town 5 Range 2 W.
 The lengths and variations of the lines are shown
 in the following plat and the corners established are
 described in the notes as numbered on the plat



- Cor. No 1 NW corner of Schoolhouse S 47 E 103
 W 7 S 59 W 77
- 2 W 6 S 3° E 94) near corner
 W 15 S 56 W 194) to Sec 29 30 31 32
- 3 Br 13 S 55 W 5
- 4 Br 14 S 44 E 84 (new)
 Br 7 N 40 E 44 (old)
- 5 Br 5 S 88 E 6
 Br 4 N 5 E 11 1/2
- 6 Pin 7 S 2 1/2 E 26 New
 Pin 6 N 42 E 43
- 7 Pin 5 West 13
 Pin 5 N 4 W 21
- 8 corner 5 lines east
 W 7 N 42 E 66
 W 12 S 38 E 118
- 9 Original corner
- 10 Br 12 S 78 E 29 (new)
 Br 7 N 40 W 66 (old)

I certify that the foregoing are the
 true and original field notes of survey made
 by me on the 4th day of June 1875

Joel Barber
 County Surveyor

80.15
 80.25